

# Change Notice EB, M, MB2400, MB2500 Series

## Change to AT617F LED Specifications for EB, MB2400, MB2500 Pushbuttons & M Rockers & Paddles

Type of Change:

- Engineering    Part Number  
 Product    Appearance


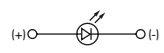
There will be a change to the specifications for AT617F, the green single element LED. This will effect EB, MB2400 and MB2500 Series snap-in mount pushbuttons and M Series snap-in mount rockers and paddles, all of which feature the AT212 LED bezel with 2 round LEDs. The revision will effect all standard and custom part numbers from these series with AT617F and AT212 bezel.



EB Pushbutton

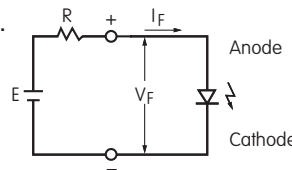
### CHANGE TO SPECIFICATIONS FOR AT617F LED

Electrical specifications are determined at a basic temperature of 25°C. Lamp circuit is independent of switch operation.

 AT617F Single Element LED				Before Change	After Change
		Color		F	F
Maximum Forward Current	$I_{FM}$		25mA	25mA	
Typical Forward Current	$I_F$		20mA	20mA	
Forward Voltage	$V_F$		2.2V	2.25V	
			( $I_F = 20mA$ )	( $I_F = 20mA$ )	
Maximum Reverse Voltage	$V_{RM}$		5V	5V	
Current Reduction Rate Above 25°C	$\Delta I_F$		0.33mA/°C	0.33mA/°C	
Ambient Temperature Range			-15°C ~ +70°C	-15°C ~ +70°C	

#### Notes

- The LED circuit is isolated and requires an external power source.
- If the source voltage exceeds rated voltage, a ballast resistor is required. The resistor value can be calculated by using the formula shown here.
- After the change, AT617F LED color will be different in ON state than the LED before the change in ON state.
- There are no changes to the Red (C) or Yellow (E) LEDs.
- There are no changes to any other specifications or dimensions.
- Contact factory if further details are needed.



$$R = \frac{E - V_F}{I_F}$$

Where: R = Resistor Value (Ohms)  
 E = Source Voltage (V)  
 $V_F$  = Forward Voltage (V)  
 $I_F$  = Forward Current (A)

### PART NUMBERS EFFECTED BY CHANGES TO AT617F LED

EB snap-in mount pushbuttons with AT617F round LED and AT212 bezel (any color)

M snap-in mount rockers and paddles with AT617F round LED and AT212 bezel (any color)

MB2400 snap-in mount pushbuttons with AT617F round LED and AT212 bezel (any color)

MB2500 snap-in mount pushbuttons with AT617F round LED and AT212 bezel (any color)

#### Effective Date

Changes to AT617F LEDs will be effective February 2017.

**NKK**  
SWITCHES

<http://www.nkkswitches.com> • 1.877.2BUYNKK (228.9655)

7850 East Gelding Drive • Scottsdale, AZ 85260 • Telephone 480.991.0942 • Fax 480.998.1435