

Contents Indicators

Toggles



A Series..... M3
Complement to A Switches

Rockers



G Series M5
Complement to G Switches

Pushbuttons



HB Series M6
Complement to HB Pushbuttons

Illuminated PB



JF Series M8
Complement to JF Tactiles

Programmable

Keylocks



KB Series M9
Complement to KB Pushbuttons

Rotaries



LB Series M14
Complement to LB Pushbuttons

Slides



P01 for MLW Series M19
Complement to MLW Rockers

Tactiles

Tilt



UB Series M21
Complement to UB Pushbuttons

Touch



UB2 Series M26
Complement to UB2 Pushbuttons

Indicators **M**

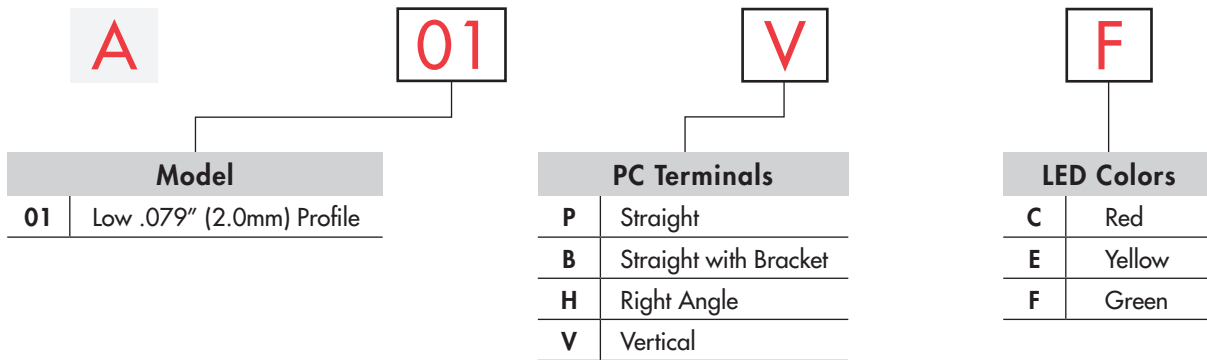


YB Series M29
Complement to YB Pushbuttons

Accessories

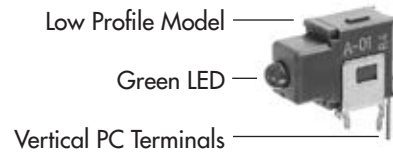
Supplement

TYPICAL INDICATOR ORDERING EXAMPLE

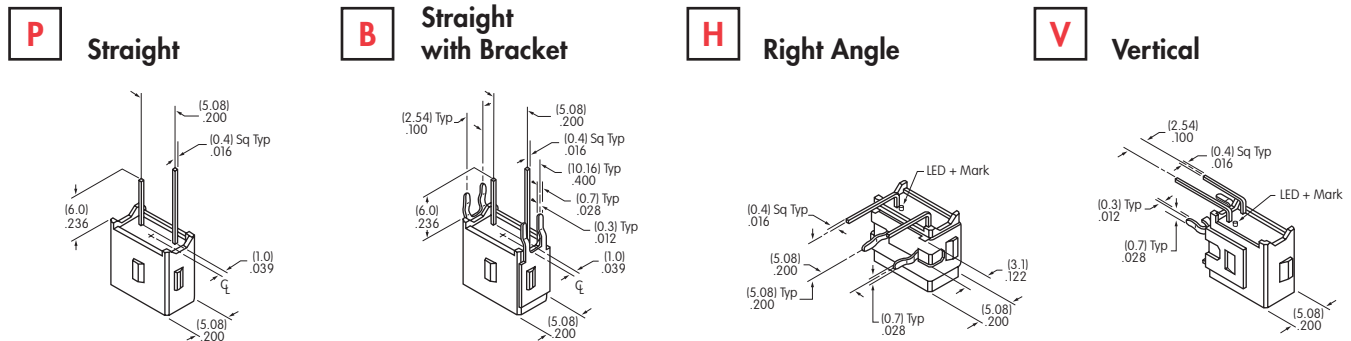


DESCRIPTION FOR TYPICAL ORDERING EXAMPLE

A01VF



PC TERMINALS



LED COLORS & SPECIFICATIONS

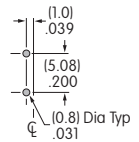
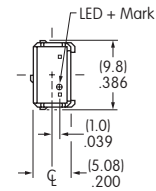
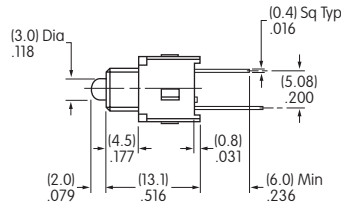
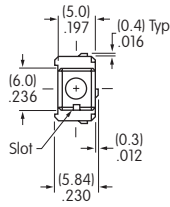
		A01 Indicator		
		C	E	F
Color		Red	Yellow	Green
LED is colored in OFF state	Color	Red	Yellow	Green
Maximum Forward Current	I_{FM}	30mA	30mA	30mA
Typical Forward Current	I_F	20mA	20mA	20mA
Forward Voltage	V_F	2.1V	2.1V	2.2V
Maximum Reverse Voltage	V_{RM}	5V	5V	5V
Current Reduction Rate Above 25°C	ΔI_F	0.40mA/°C	0.40mA/°C	0.40mA/°C
Ambient Temperature Range		-25°C ~ +85°C		

Electrical specifications are determined at a basic temperature of 25°C.
 If the source voltage is greater than the LED's rated voltage, a ballast resistor must be connected in series with the LED.
 The ballast resistor value can be calculated by using the formula shown in the Supplement section.

Toggles
 Rockers
 Pushbuttons
 Illuminated PB
 Programmable
 Keylocks
 Rotaries
 Slides
 Tactiles
 Tilt
 Touch
 Indicators
 Accessories
 Supplement

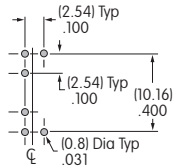
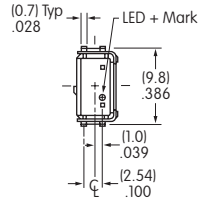
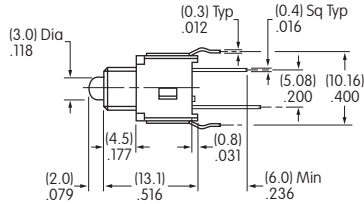
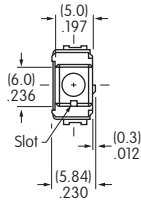
TYPICAL INDICATOR DIMENSIONS

Straight PC



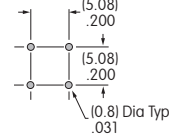
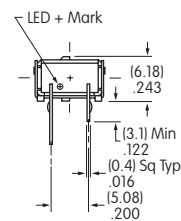
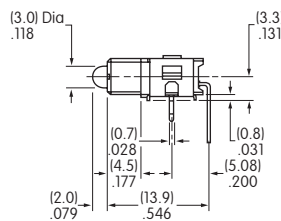
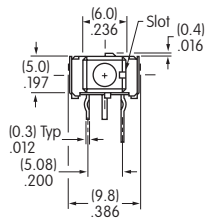
A01PF

Straight PC • Bracket



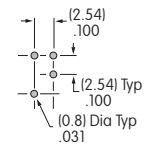
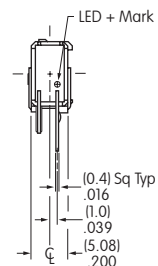
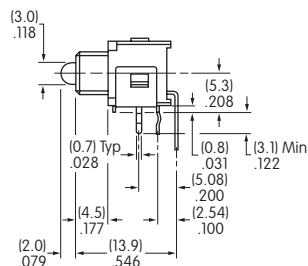
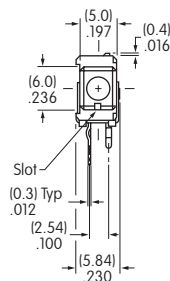
A01BF

Right Angle PC



A01HF

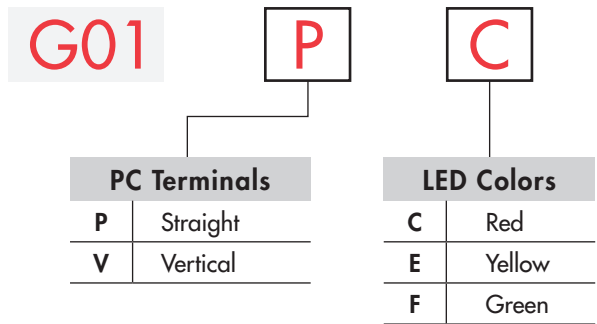
Vertical PC



A01VF

Toggles
Rockers
Pushbuttons
Illuminated PB
Programmable
Keylocks
Rotaries
Slides
Tactiles
Tilt
Touch
Indicators
Accessories
Supplement

TYPICAL INDICATOR ORDERING EXAMPLE



DESCRIPTION FOR TYPICAL ORDERING EXAMPLE

G01PC

Straight PC Terminals



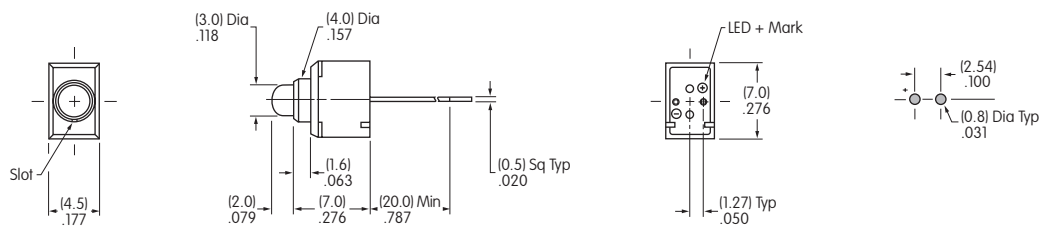
LED COLORS & SPECIFICATIONS

		C	E	F
LED is colored in OFF state	Color	Red	Yellow	Green
Maximum Forward Current	I_{FM}	30mA	30mA	30mA
Typical Forward Current	I_F	20mA	20mA	20mA
Forward Voltage	V_F	2.1V	2.1V	2.2V
Maximum Reverse Voltage	V_{RM}	5V	5V	5V
Current Reduction Rate Above 25°C	ΔI_F	0.40mA/°C	0.40mA/°C	0.40mA/°C
Ambient Temperature Range		-25°C ~ +85°C		

Electrical specifications are determined at a basic temperature of 25°C.

If the source voltage is greater than the LED's rated voltage, a ballast resistor must be connected in series with the LED. That ballast resistor value can be calculated by using the formula shown in the Supplement section.

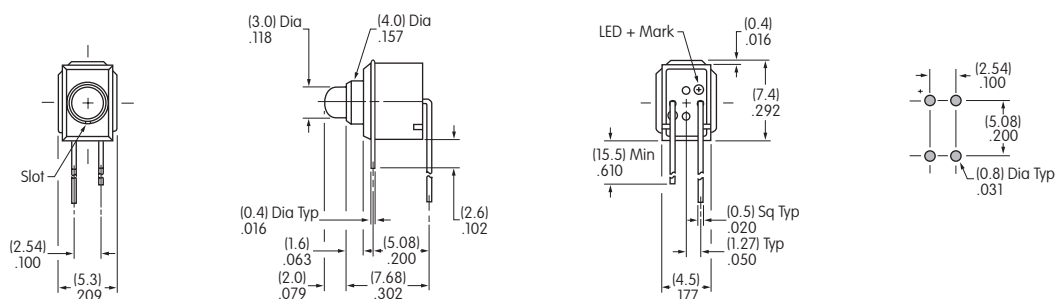
TYPICAL INDICATOR DIMENSIONS



Straight PC



G01PC



Vertical PC

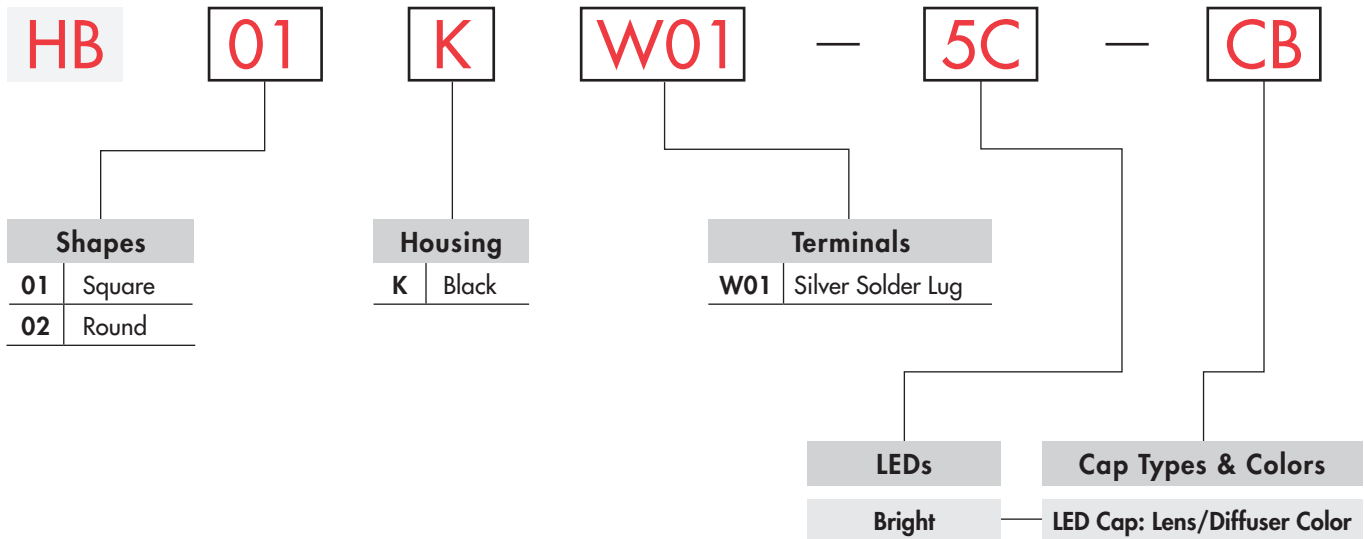


G01VC

These indicators have anode and cathode terminals along with 2 support pins.

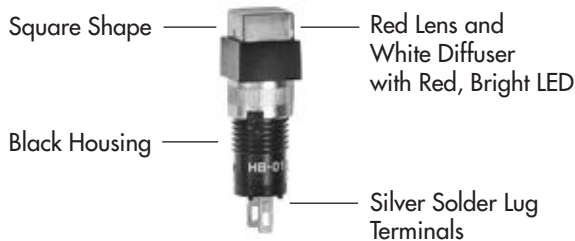
Toggles
Rockers
Pushbuttons
Illuminated PB
Programmable
Keylocks
Rotaries
Slides
Tactiles
Tilt
Touch
Accessories
Supplement

TYPICAL INDICATOR ORDERING EXAMPLE







DESCRIPTION FOR TYPICAL ORDERING EXAMPLE

HB01KW01-5C-CB



LED COLORS & SPECIFICATIONS

The electrical specifications shown are determined at a basic temperature of 25°C.
 LED circuit is isolated and requires external power source. Single element LED is colored in OFF state.
 If the source voltage exceeds the rated voltage, a ballast resistor is required.
 The resistor value can be calculated by using the formula in the Supplement section.

	Bright AT633		Note for Super Bright: 	Bright			Super Bright			Unit
				5C	5D	5F	6B	6F	6G	
	Super Bright AT624G Blue		Color	Red	Amber	Green	White	Green	Blue	
	AT629B White		Maximum Forward Current	30	30	30	30	30	30	mA
	AT630F Green		Typical Forward Current	20	20	20	20	20	20	mA
			Forward Voltage	2.1	2.05	2.1	3.3	3.3	3.3	V
			Maximum Reverse Voltage	10	10	10	7	7	7	V
			Current Reduction Rate Above 25°C	0.40	0.40	0.40	0.40	0.40	0.40	mA/°C
	T-1 Bi-pin		Ambient Temperature Range	-25° ~ +50°C			-25° ~ +50°C			

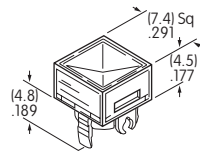
CAP TYPES & COLORS

Colored Cap for Bright LEDs

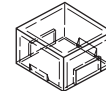
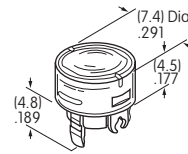
Lens/Diffuser
Colors Available:

- CB** Red/White
- DB** Amber/White
- FB** Green/White

AT4168
Square



AT4169
Round



Transparent Colored Lens



Translucent White Diffuser



Colored LED AT633

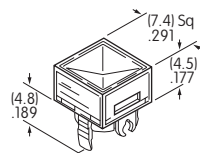
Material: Polycarbonate Finish: Glossy

White Cap for Bright & Super Bright LEDs

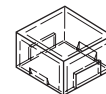
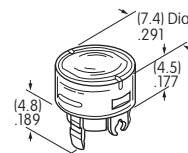
JB Clear Lens/
White Diffuser

Material: Polycarbonate
Finish: Glossy

AT4033
Square



AT4034
Round



Transparent Clear Lens



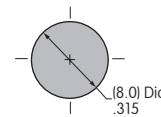
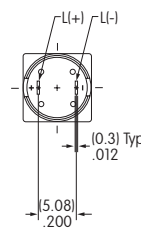
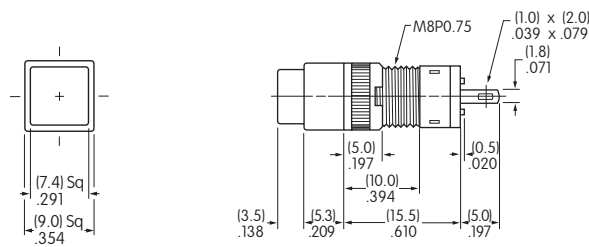
Translucent White Diffuser



Colored LEDs AT624, AT629, AT630, or AT633

TYPICAL INDICATOR DIMENSIONS

Square

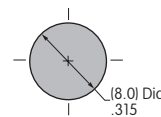
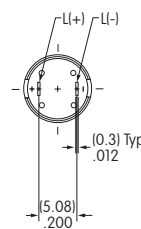
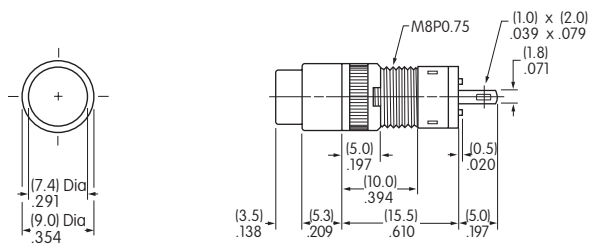


Recommended Panel Thickness: .020" ~ .197" (0.5 ~ 5.0mm)



HB01KW01-5C-CB

Round



Recommended Panel Thickness: .020" ~ .197" (0.5 ~ 5.0mm)



HB02KW01-5C-CB

TYPICAL INDICATOR ORDERING EXAMPLE

KB **02** **K** **W01** — **12** — **FF**

Shapes

Bushing Mounting	
01	Square
02	Round
03	Rectangular
Snap-in Mounting	
04	Square
05	Round
06	Rectangular

Housing	
K	Black only

Terminals	
W01	Silver Solder Lug

Lamps

Incandescent Lamp Used with Solid Cap	
05	5-volt
12	12-volt

Incandescent or Neon Lamp Used with Insert Cap	
05	5-volt
12	12-volt
01	110-volt Neon

Bright LED Used with Cap for LED			
Colors		Resistor	
5C	Red	No Code	No Resistor
5D	Amber	05	5-volt
		12	12-volt
5F	Green	24	24-volt

Super Bright LED Used with Cap for LED	
6B	White
6F	Green
6G	Blue

Cap Types & Colors

Solid Cap: Lens/Filter Colors			
BB	White/White	FB	Green/White
CB	Red/White	FF	Green/Green
CC	Red/Red	GB	Blue/White
EB	Yellow/White	GG	Blue/Blue

Insert Cap: Lens/Filter Colors	
JB	Clear/White
JC	Clear/Red
JE	Clear/Yellow
*JF	Clear/Green
*JG	Clear/Blue

* JF & JG not suitable with neon.

LED Cap: Lens/Diffuser Colors	
AB	Square Spot Illuminated Black Cap/White Window
JB	Clear/White
JC	Clear/Red
JD	Clear/Amber
JF	Clear/Green

LED Cap: Lens/Diffuser Colors	
JB	Clear/White

DESCRIPTION FOR TYPICAL ORDERING EXAMPLE

KB02KW01-12-FF



12-volt Incandescent Lamp Solid Cap with Green Lens and Green Filter

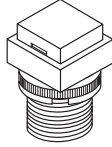
Black Housing Round with Bushing Mounting

Silver Solder Lug Terminals

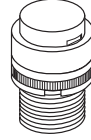
SHAPES & MOUNTING TYPES

Bushing Mounting

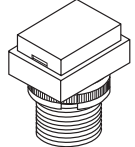
01 .551" (14mm)
Square



02 .551" (14mm)
Round

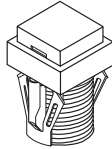


03 .551" x .728" (14mm x 18.5mm)
Rectangular

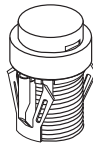


Snap-in Mounting

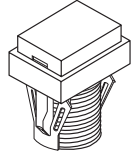
04 .551" (14mm)
Square



05 .551" (14mm)
Round



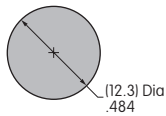
06 .551" x .728" (14mm x 18.5mm)
Rectangular



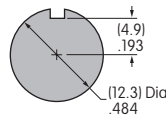
The bezel is an integral part of the indicator body.

Bushing Mounting

Without
Keyway



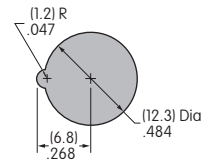
Panel Thickness:
.020" ~ .315"
(0.5 ~ 8mm)



With
Keyway

Snap-in Mounting

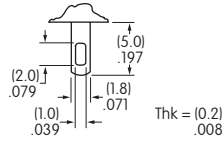
Panel Thickness:
.039" ~ .138"
(1.0 ~ 3.5mm)



TERMINALS

W01



Silver Solder Lug




LAMP COLORS & SPECIFICATIONS

The electrical specifications shown are determined at a basic temperature of 25°C.
If the source voltage exceeds the rated voltage, a ballast resistor is required.
The ballast resistor calculation and more lamp detail are shown in the Supplement section.

Incandescent & Neon Lamps

AT611 Incandescent	AT615 Neon		05	12	01	Recommended Resistors for Neon: 33K ohms for 110V AC; 100K ohms for 220V AC	
		Voltage	V	5V AC	12V AC		110V AC
		Current	I	115mA	60mA		1.5mA
		Endurance	Hours	7,000 average			10,000

Bright LED without Resistor

AT635	Red	Amber	Green	No Code No Resistor		
				Red	Amber	Green
LEDs are colored in OFF state.	5C	5D	5F			
				30mA	30mA	30mA
				20mA	20mA	20mA
				1.9V	2.0V	2.1V
				5V	5V	5V
				0.42mA/°C	0.29mA/°C	0.42mA/°C
				-25° ~ +50°C		




T-1 1/2 Bi-pin

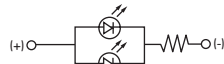
LAMP COLORS & SPECIFICATIONS

The electrical specifications shown are determined at a basic temperature of 25°C.
 If the source voltage exceeds the rated voltage, a ballast resistor is required.
 The ballast resistor calculation and more lamp detail are shown in the Supplement section.

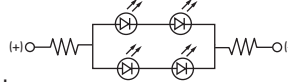
Bright LED with Resistor

AT634 LEDs are colored in OFF state.  T-1 1/4 Bi-pin	Color Codes: Red Amber Green <div style="display: flex; justify-content: space-around;"> 5C 5D 5F </div>	Resistor Codes <div style="display: flex; justify-content: space-around;"> 05 12 24 </div>			
	Maximum Forward Current	I_{FM}	—	—	—
	Typical Forward Current	I_F	25mA	20mA	10mA
	Forward Voltage	V_F	5V	12V	24V
	Maximum Reverse Voltage	V_{RM}	4V	8V	16V
	Current Reduction Rate Above 25°C	ΔI_F	—	—	—
	Ambient Temperature Range		-25° ~ +50°C		

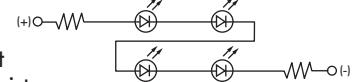
AT634
5-volt
2-element
with 1 Resistor





AT634
12-volt
4-element
with 2 Resistors



AT634
24-volt
4-element
with 2 Resistors



Super Bright Single Element LED

AT625G Blue AT631B White AT632F Green  T-1 Bi-pin		Color Codes: White Green Blue <div style="display: flex; justify-content: space-around;"> 6B 6F 6G </div>			
	Maximum Forward Current	I_{FM}	30mA	30mA	30mA
	Typical Forward Current	I_F	20mA	20mA	20mA
	Forward Voltage	V_F	3.3V	3.3V	3.3V
	Maximum Reverse Voltage	V_{RM}	7V	7V	7V
	Current Reduction Rate Above 25°C	ΔI_F	0.40mA/°C	0.40mA/°C	0.40mA/°C
	Ambient Temperature Range		-25° ~ +50°C		

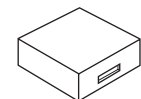
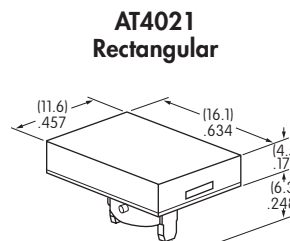
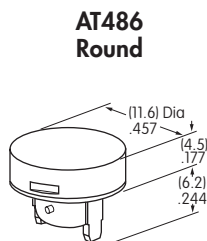
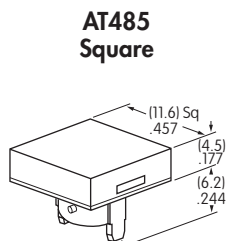
CAP TYPES & COLOR COMBINATIONS

Color Codes: B White C Red E Yellow F Green G Blue J Clear

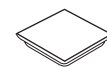
Solid Cap for Incandescent Lamp

Lens/Filter Colors Available:

- | | |
|----|----|
| BB | FB |
| CB | FF |
| CC | GB |
| EB | GG |



Translucent Colored Lens



Translucent Colored Filter



Lamp AT611

Material: Polycarbonate Finish: Glossy

Toggles
 Rockers
 Pushbuttons
 Illuminated PB
 Programmable
 Keylocks
 Rotaries
 Slides
 Tactiles
 Tilt
 Touch
 Accessories
 Supplement

CAP TYPES & COLOR COMBINATIONS

Color Codes: A Black B White C Red D Amber E Yellow F Green G Blue J Clear

Insert Cap for Incandescent or Neon Lamp

Lens/Filter Colors Available:

JB

AT487
Square

AT488
Round

AT4022
Rectangular



Transparent Clear Lens

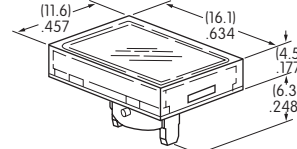
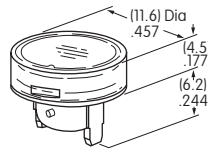
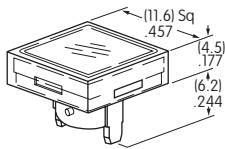
JC

JE



Translucent Colored Filter

JF



JG



Lamp AT611 Lamp AT615

JF and JG not suitable with neon lamp.

Material: Polycarbonate Finish: Glossy

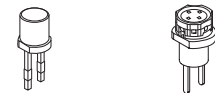
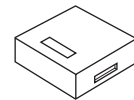
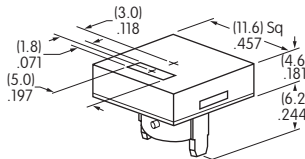
Spot Illuminated Cap for Bright LED without Resistor or with Resistor

Cap/Window Colors Available:

AB

Opaque Black Cap with Translucent White Window for Spot Illumination

AT4051
Square



Bright LED AT635 Bright LED AT634

Material: Polycarbonate Finish: Matte

Cap for Bright LED without Resistor or LED with Resistor

Lens/Diffuser Colors Available: (AT4133, 4132, 4134 white diffusers; AT4158, 4160, 4159 colored diffusers)

JB

AT4133

AT4132

AT4134



Transparent Clear Lens

Square

Round

Rectangular

JC

AT4158

AT4160

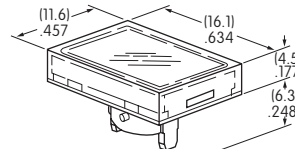
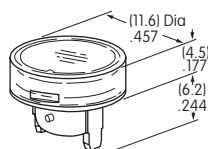
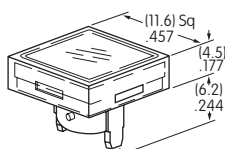
AT4159



Translucent Diffuser

JD

JF



Bright LED AT635 Bright LED AT634

Material: Polycarbonate Finish: Glossy

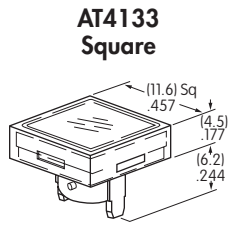
CAP TYPES & COLOR COMBINATIONS

Cap for Super Bright LED

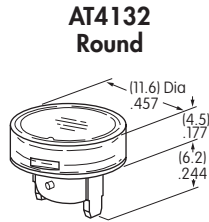
Lens/Diffuser
Colors Available:



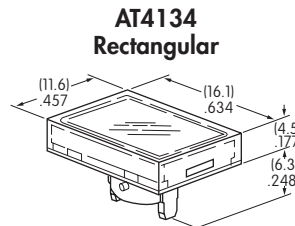
Clear Lens
White Diffuser



AT4133 Square



AT4132 Round



AT4134 Rectangular



Translucent Clear Lens



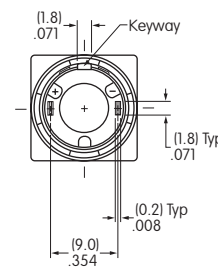
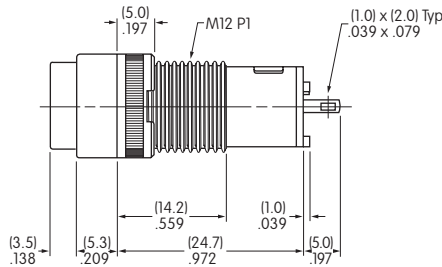
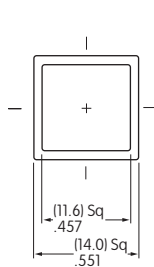
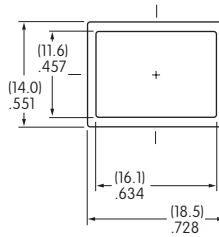
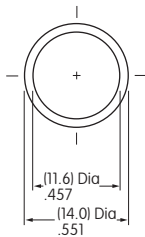
Translucent White Diffuser



Super Bright LEDs
AT625, AT631, AT632

Material: Polycarbonate Finish: Glossy

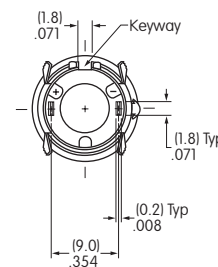
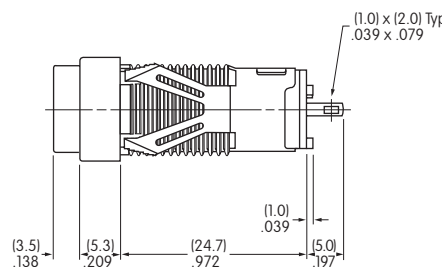
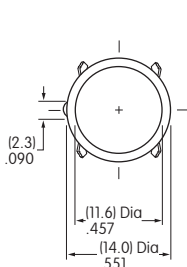
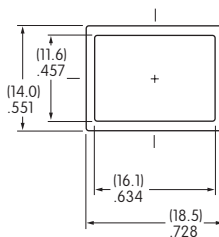
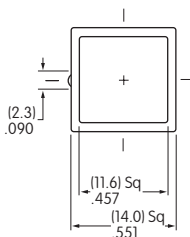
TYPICAL INDICATOR DIMENSIONS



Bushing Mount



KB01KW01-05-GG



Snap-in Mount



KB05KW01-05-FF

TYPICAL INDICATOR ORDERING EXAMPLE

LB 01 G W01 — 5C 12 — JC

Shapes

01	Square
02	Round
03	Rectangular

Housing

K	Black
G	Gray

Terminals

W01	Silver Solder Lug/ Quick Connect Terminals
-----	--

Lamps

Incandescent Lamp Used with Solid Cap

05	5-volt
12	12-volt

Incandescent or Neon Used with Insert Cap

01	110-volt Neon
05	5-volt Incandescent
12	12-volt Incandescent

Bright LED Used with LED Cap

Colors		Resistor	
5C	Red	No Code	No Resistor
5D	Amber	05	5-volt
		12	12-volt
5F	Green	24	24-volt

Super Bright LED Used with LED Cap

6B	White
6F	Green
6G	Blue

Cap Types & Colors

Solid Cap: Lens/Filter Colors

BJ	White/Clear
CJ	Red/Clear
EJ	Yellow/Clear
FJ	Green/Clear
GJ	Blue/Clear

Insert Cap: Lens/Filter Colors

JB	Clear/White
JC	Clear/Red
JE	Clear/Yellow
*JF	Clear/Green
*JG	Clear/Blue

*JF & JG not suitable with neon.

LED Cap: Lens/Diffuser Colors

JB	Clear/White
JC	Clear/Red
JD	Clear/Amber
JF	Clear/Green

LED Cap: Lens/Diffuser Colors

JB	Clear/White
----	-------------

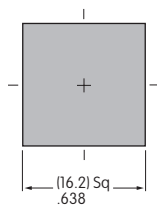
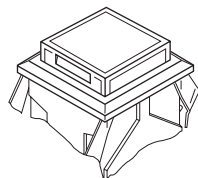
DESCRIPTION FOR TYPICAL ORDERING EXAMPLE

LB01GW01-5C12-JC

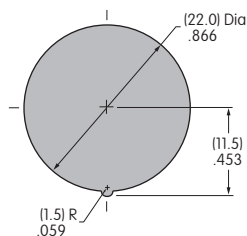
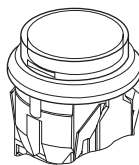


SHAPES & PANEL CUTOUTS

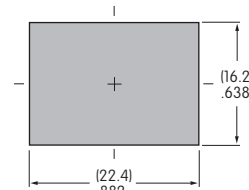
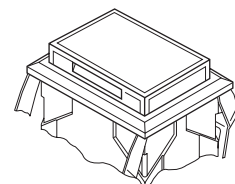
01 .622" (15.8mm)
Square



02 .854" (21.7mm)
Round



03 .622" x .866" (15.8mm x 22.0mm)
Rectangular



Panel Thickness: .039" ~ .157" (1.0 ~ 4.0mm)

HOUSING

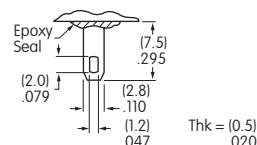
Housing Colors Available:

K Black

G Gray


TERMINALS

W01 Silver Solder Lug/.110" (2.8mm) Quick Connect




LAMP CODES & SPECIFICATIONS

Incandescent Lamp for Solid Colored and Colored Insert Caps

AT607  T-1 Bi-pin		05	12	
	Voltage	V	5V AC	12V AC
	Current	I	115mA	60mA
	Endurance	Hours	10,000 average	
	Ambient Temp. Range		-25°C ~ +50°C	

Neon Lamp for Colored Insert Cap



AT607N  T-1 Bi-pin		01	
	Voltage	V	110V AC
	Current	I	1.5mA
	Endurance	Hours	10,000 average
	Ambient Temp. Range		-25°C ~ +50°C
Recommended Resistors: 33K ohms for 110V AC; 100K ohms for 220V AC			

The electrical specifications shown are determined at a basic temperature of 25°C.


LED COLORS & SPECIFICATIONS

The electrical specifications shown are determined at a basic temperature of 25°C. Polarity marks are on the device.
 If the source voltage exceeds the rated voltage, a ballast resistor is required.
 The resistor value can be calculated by using the formula in the Supplement section.
 Additional lamp detail is shown in the Accessories & Hardware section.

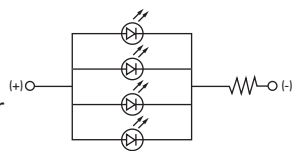
Bright LED without Resistor

AT635 LEDs are colored in OFF state.   T-1½ Bi-pin	Color Codes	Red 5C	Amber 5D	Green 5F	No Code No Resistor
	Maximum Forward Current	I_{FM}			30mA
	Typical Forward Current	I_F			20mA
	Forward Voltage	V_F			1.9V
	Maximum Reverse Voltage	V_{RM}			5V
	Current Reduction Rate Above 25°C	ΔI_F			0.42mA/°C
	Ambient Temperature Range	-25° ~ +50°C			

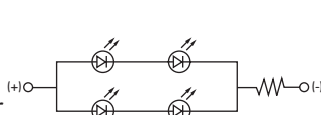
Bright LED with Resistor

AT627 with Resistor  T-1 Bi-pin	Color Codes:	Red 5C	Amber 5D	Green 5F	Resistor Codes		
	Maximum Forward Current	I_{FM}			05	12	24
	Typical Forward Current	I_F			52mA	26mA	13mA
	Forward Voltage	V_F			5V	12V	24V
	Maximum Reverse Voltage	V_{RM}			4V	8V	16V
	Current Reduction Rate Above 25°C	ΔI_F			0.50mA/°C		
	Ambient Temperature Range	-25° ~ +50°C					

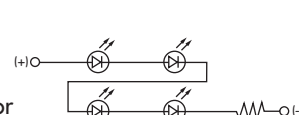
AT627
5-volt
4-element
with Resistor






AT627
12-volt
4-element
with Resistor



AT627
24-volt
4-element
with Resistor



Super Bright Single Element LED

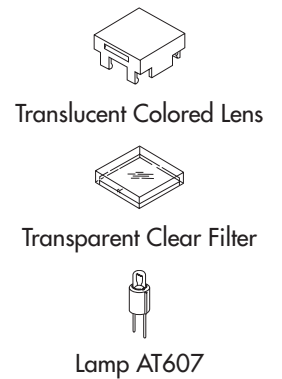
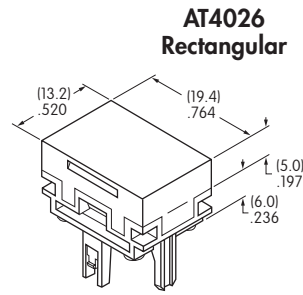
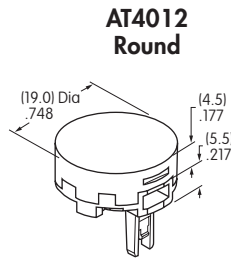
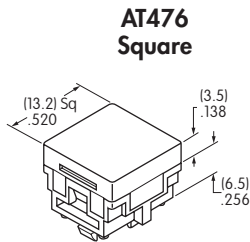
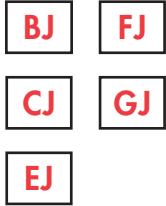
AT625G Blue AT631B White AT632F Green   T-1 Bi-pin				6B	6F	6G	
	Color	White	Green	Blue			
	Maximum Forward Current	I_{FM}			30mA	30mA	30mA
	Typical Forward Current	I_F			20mA	20mA	20mA
	Forward Voltage	V_F			3.3V	3.3V	3.3V
	Maximum Reverse Voltage	V_{RM}			7V	7V	7V
	Current Reduction Rate Above 25°C	ΔI_F			0.40mA/°C	0.40mA/°C	0.40mA/°C
Ambient Temperature Range	-25° ~ +50°C						

CAP TYPES & COLOR COMBINATIONS

Color Codes: B White C Red D Amber E Yellow F Green G Blue J Clear

Solid Cap for Incandescent Lamp

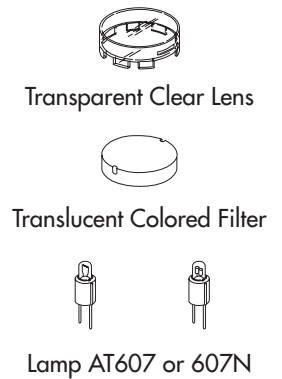
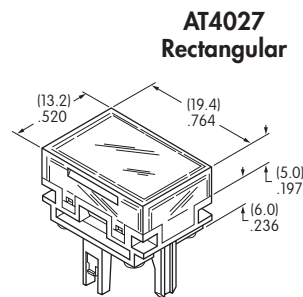
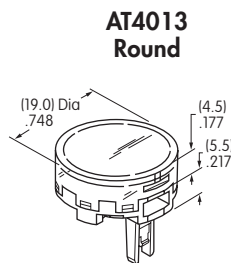
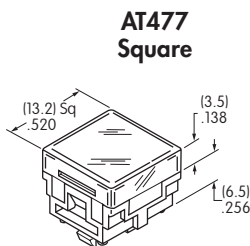
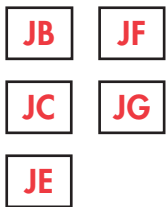
Lens/Filter
Colors Available:



Material: Polycarbonate Finish: Glossy

Insert Cap for Incandescent or Neon Lamp

Lens/Filter
Colors Available:

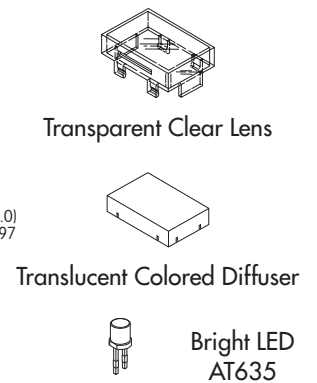
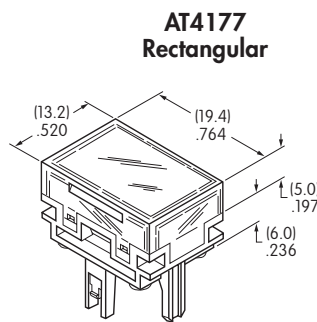
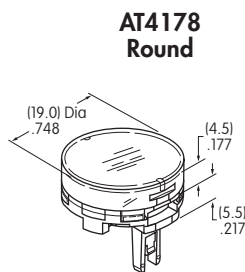
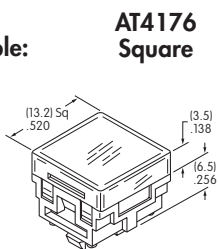


JF and JG not suitable with neon lamp.

Material: Polycarbonate Finish: Glossy

Cap for Bright LED without Resistor

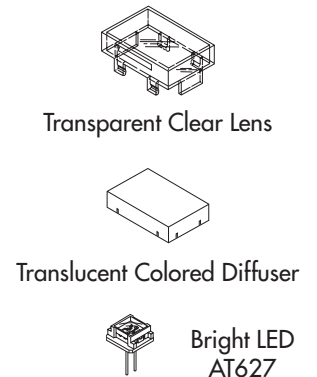
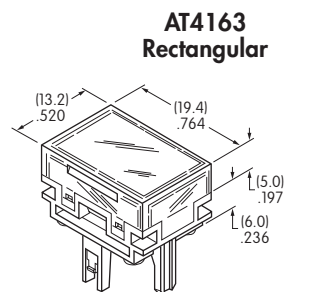
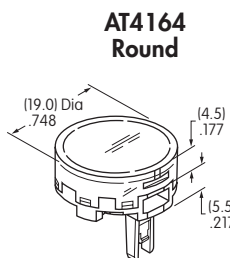
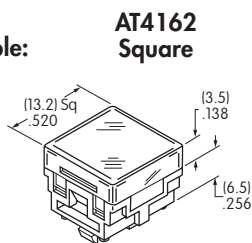
Lens/Diffuser
Colors Available:



Material: Polycarbonate Finish: Glossy

Cap for Bright LED with Resistor

Lens/Diffuser
Colors Available:



Material: Polycarbonate Finish: Glossy

CAP TYPES & COLOR COMBINATIONS

Cap for Super Bright LEDs

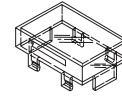


Clear Lens
White Diffuser

AT4129
Square

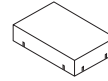
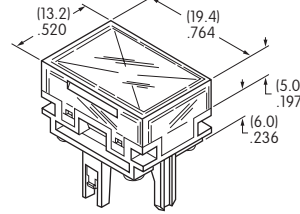
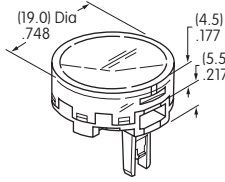
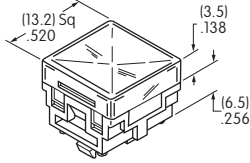
AT4128
Round

AT4130
Rectangular



Transparent
Clear Lens

Material:
Polycarbonate
Finish: Glossy



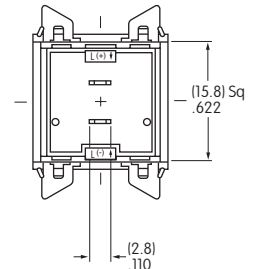
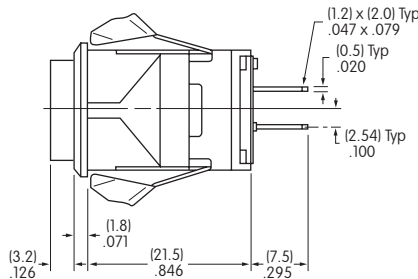
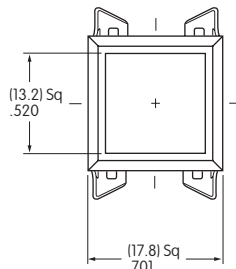
Translucent
White Diffuser



LEDs AT625
AT631 AT632

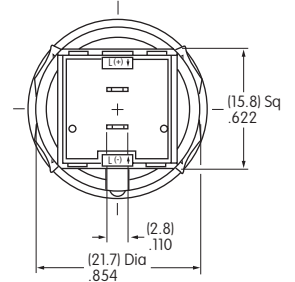
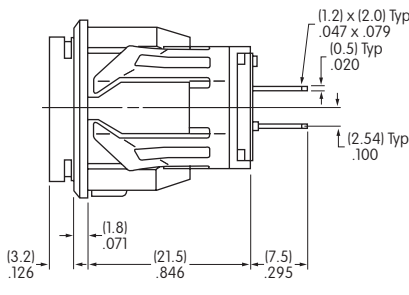
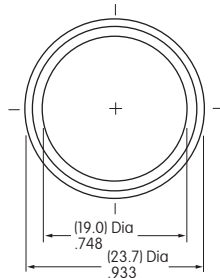
TYPICAL INDICATOR DIMENSIONS

Square



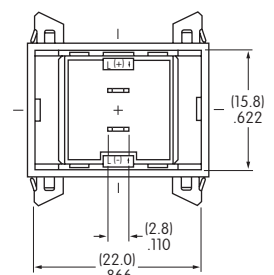
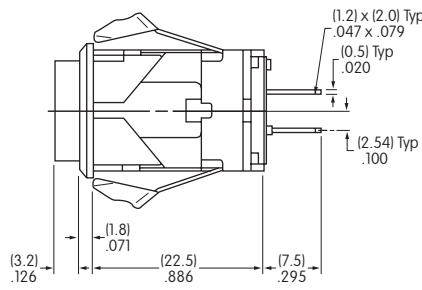
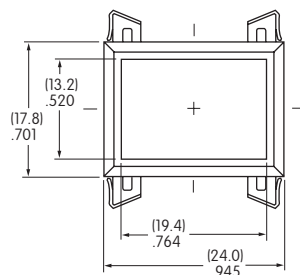
LB01KW01-12-CJ

Round



LB02KW01-12-CJ

Rectangular



LB03KW01-12-CJ

TYPICAL INDICATOR ORDERING EXAMPLE

P01

12

C

1

A

Lamps	
Incandescent	
06	6-volt
12	12-volt
18	18-volt
24	24-volt
28	28-volt
Neon	
N	110-volt

Cap Colors	
B	White
C	Red
D	Orange
E	Yellow
*F	Green
*G	Blue

*F & G not suitable with neon.

Bezels	
1	.787" (20.0mm) Wide
2	.937" (23.8mm) Wide

Bezel Colors	
A	Black
B	White
C	Red
D	Orange
E	Yellow
F	Green
G	Blue
H	Gray

DESCRIPTION FOR TYPICAL ORDERING EXAMPLE

P01-12-C-1A



LAMP CODES & SPECIFICATIONS

Incandescent & Neon Lamps for Solid & Design Caps

AT602 Incandescent	AT602N Neon	$L(+)$ $L(-)$	06	12	18	24	28	N		
			Voltage	6V	12V	18V	24V	28V	110V	
			Current	80mA	50mA	35mA	25mA	22mA	1.5mA	
			MSCP	.159	.215	.398	.215	.247	NA	
			Endurance	Hours					2,000 Average	15,000 Avg.
			Ambient Temperature Range						-10° ~ +50°C	
T-1 1/2 Pilot Slide Base			Recommended Resistor for Neon: 33K ohms for 110V AC & 100K ohms for 220V AC							

Electrical specifications are determined at a basic temperature of 25°C.

For dimension drawings of lamps, see Accessories & Hardware Index.

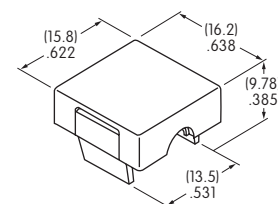
If the source voltage is greater than rated voltage, a ballast resistor is required.

The ballast resistor calculation and more lamp detail are shown in the Supplement section.

CAP COLORS

B White	D Orange	F Green
C Red	E Yellow	G Blue

AT429

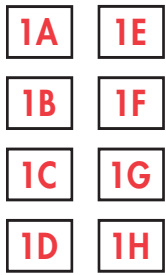


Material: Polycarbonate

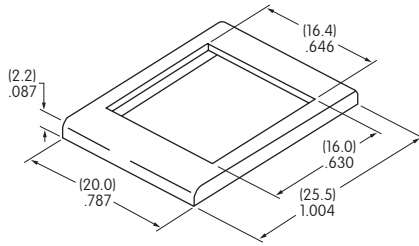
Finish: Glossy

F & G not suitable for neon

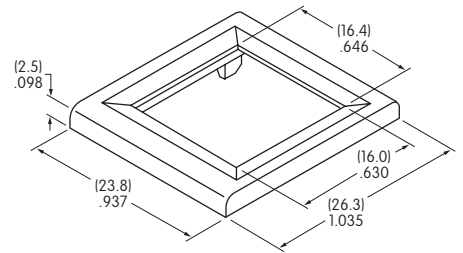
OPTIONAL BEZELS & COLORS



AT204
.787" (20.0mm) Wide Bezel



AT9201
.937" (23.8mm) Wide Bezel



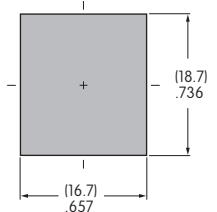
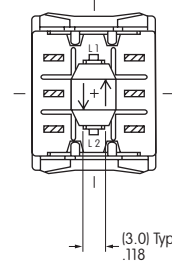
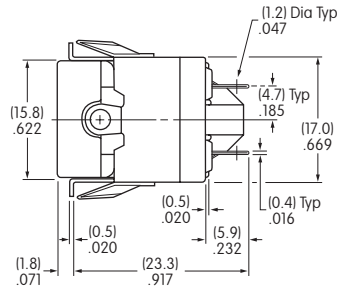
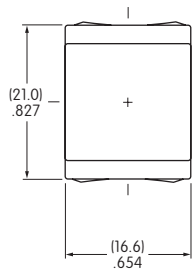
Material: Polycarbonate

Standard Finish: Glossy

Color Codes: A Black B White C Red D Orange E Yellow F Green G Blue H Gray

TYPICAL INDICATOR DIMENSIONS

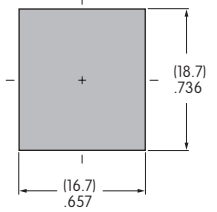
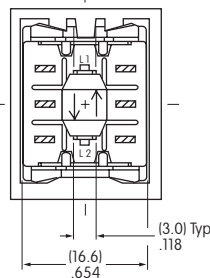
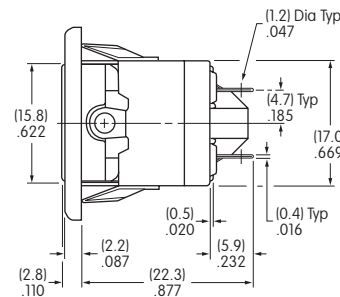
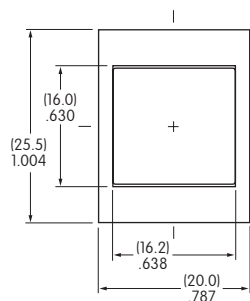
Without Bezel



Panel Thickness:
 .039" ~ .157"
 (1.0mm ~ 4.0mm)

P01-12-C

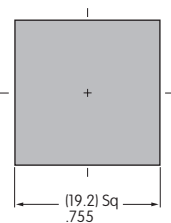
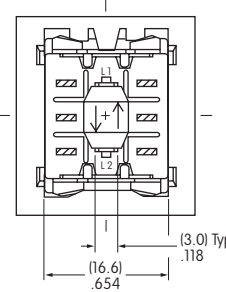
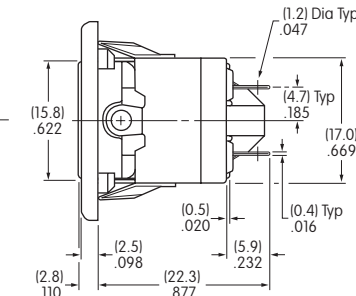
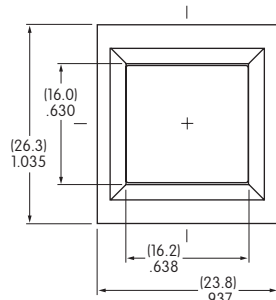
With Bezel



Panel Thickness:
 .039" ~ .157"
 (1.0mm ~ 4.0mm)

P01-12-C-1A

With Large Bezel



Panel Thickness:
 .039" ~ .157"
 (1.0mm ~ 4.0mm)

P01-12-C-2A

Toggles
 Rockers
 Pushbuttons
 Illuminated PB
 Programmable
 Keylocks
 Rotaries
 Slides
 Tactiles
 Tilt
 Touch
 Indicators
 Accessories
 Supplement

UB 01 K W03 5C — JC

Mounting Types

PCB Mounting	
01	Square
03	Rectangular
* Snap-in Mounting	
04	Square
06	Rectangular
06B	Rectangular with Side Barriers

* Standard with Solder Lug terminals

Housing	
K	Black

Terminals	
W01	Silver Solder Lug (for Snap-in Mounting)
W03	Silver Straight PC (for PCB Mounting)

LEDs

Bright LED	
5C	Red
5D	Amber
5F	Green

Super Bright LED	
6B	White
6F	Green
6G	Blue

Super Bright Bicolor LED	
6CF	Red/Green
6DG	Amber/Blue

Cap Types & Colors

Full Face Illuminated Cap for Bright LED			
Lens/Diffuser Colors			
CB	Red/White	FF	Green/Green
CC	Red/Red	*FJ	Green/Clear
*CJ	Red/Clear	JB	Clear/White
DB	Amber/White	JC	Clear/Red
DD	Amber/Amber	JD	Clear/Amber
*DJ	Amber/Clear	JF	Clear/Green
FB	Green/White	*JJ	Clear/Clear

* Not available with Rectangular cap

Full Face Illuminated Cap for Super Bright LED	
JB	Clear Lens/White Diffuser

Spot Illuminated Cap for Bright & Super Bright LEDs	
AB	Black with White Window

Bicolor Alternating Legend Cap/Diffuser for Square or Rectangular	
JCF	Red/Green
JDG	Amber/Blue

DESCRIPTION FOR TYPICAL ORDERING EXAMPLE

UB01KW035C-JC



Alternating Legends

11	ON (pos)	OFF (pos)
12	ON (neg)	OFF (neg)
13	START	STOP
14	OPEN	CLOSE



Part Numbers for Alternating Legends

Square Alternating Legends				Rectangular Alternating Legends			
Color	Part Number	Color	Part Number	Color	Part Number	Color	Part Number
Red/Green	AT9450CF11	Amber/Blue	AT9450DG11	Red/Green	AT9451CF11	Amber/Blue	AT9451DG11
	AT9450CF12		AT9450DG12		AT9451CF12		AT9451DG12
	AT9450CF13		AT9450DG13		AT9451CF13		AT9451DG13
	AT9450CF14		AT9450DG14		AT9451CF14		AT9451DG14

Refer to Ordering Table for Alternating Legend that corresponds with last 2 digits of part number.

BRIGHT & SUPER BRIGHT LED COLORS & SPECIFICATIONS

The electrical specifications shown are determined at a basic temperature of 25°C. LED circuit is isolated and requires external power source. Polarity marks are on bottom of switch. If the source voltage exceeds the rated voltage, a ballast resistor is required. Resistor value can be calculated by using the formula in the Supplement section. LED is an integral part of switch and not available separately.

	Color	Bright			Super Bright			Unit
		5C	5D	5F	6B	6F	6G	
Super Bright LEDs are Electrostatic Sensitive								
Maximum Forward Current	I_{FM}	30	30	25	20	30	30	mA
Typical Forward Current	I_F	20	20	20	15	20	20	mA
Forward Voltage	V_F	1.85	2.0	2.1	3.3	3.2	2.9	V
Maximum Reverse Voltage	V_{RM}	5	5	5	5	5	5	V
Current Reduction Rate Above 25°C	ΔI_F	0.40	0.42	0.46	0.25	0.40	0.33	mA/°C
Ambient Temperature Range		-25° ~ +50°C			-25° ~ +50°C			

CAP TYPES & COLOR COMBINATIONS

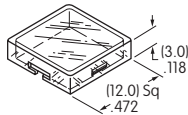
Full Face Illuminated Cap for Bright LED

Lens/Diffuser

Colors Available for Square Cap:

CB	DJ	JC
CC	FB	JD
CJ	FF	JF
DB	FJ	JJ
DD	JB	

AT4074
Lens



AT4075
Diffuser

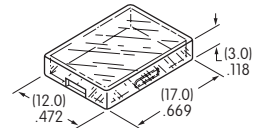


Lens/Diffuser

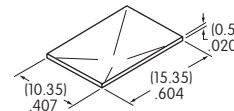
Colors Available for Rectangular Cap:

CB	FB	JD
CC	FF	JF
DB	JB	
DD	JC	

AT4117
Lens



AT4118
Diffuser

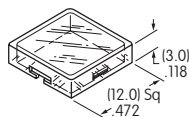


Lens & Diffuser Material: Polycarbonate Lens Finish: Glossy Diffuser Finish: Textured

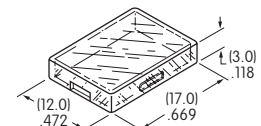
Full Face Illuminated Caps for Super Bright Bicolor LED

JB

AT4074 Square Lens



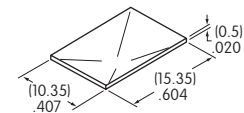
AT4117 Rectangular Lens



AT4188 Square Diffuser



AT4189 Rectangular Diffuser



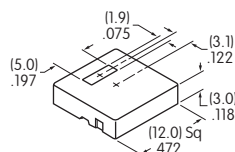
Lens & Diffuser Material: Polycarbonate Lens Finish: Glossy Diffuser Finish: Textured

Spot Illuminated Caps

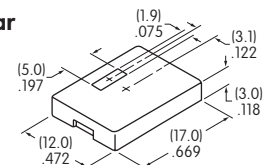
AB Black Cap with Translucent White Window for LED Display

Material: Polycarbonate
Finish: Matte

AT4119 Square for Bright and Super Bright LED



AT4120 Rectangular for Bright and Super Bright LED




Color Codes: A Black B White C Red D Amber F Green J Clear

SUPER BRIGHT BICOLOR LEDS FOR ALTERNATING LEGENDS

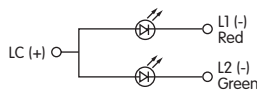
The electrical specifications shown are determined at a basic temperature of 25°C. LED circuit is isolated and requires external power source. Polarity marks are on bottom of switch. If the source voltage exceeds the rated voltage, a ballast resistor is required. Resistor value can be calculated by using the formula in the Supplement section. LED is an integral part of switch and not available separately.

Electrical Specifications for Super Bright Bicolor LEDs

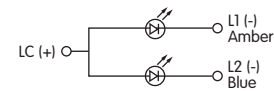
Super Bright LEDs are Electrostatic Sensitive		6CF		6DG		Unit
		Color	Red	Green	Amber	
Maximum Forward Current	I_{FM}	* 30	* 30	* 30	* 30	mA
Typical Forward Current	I_F	20	20	20	20	mA
Forward Voltage	V_F	2.3	3.2	2.1	3.0	V
Maximum Reverse Voltage	V_{RM}	4	4	4	4	V
Current Reduction Rate Above 25°C	ΔI_F	0.33	0.33	0.33	0.33	mA/°C
Ambient Temperature Range		-25° ~ +50°		-25° ~ +50°		°C

* Value applies to single color illumination for either Red or Green or Amber or Blue. When both colors are illuminated simultaneously, the sum of the currents should not exceed the smallest value of the maximum forward current.

Super Bright Bicolor Red/Green LED with 2 elements



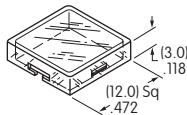
Super Bright Bicolor Amber/Blue LED with 2 elements



Alternating Legend Caps for Super Bright Bicolor LED

JCF JDG

AT4074 12.0mm Square Flat Cap



AT9450 Square Legend Insert

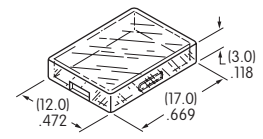


AT4188 Square Diffuser



JCF JDG

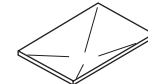
AT4117 12.0mm x 17.0mm Rectangular Flat Cap



AT9451 Rectangular Legend Insert



AT4189 Rectangular Diffuser



Lens & Diffuser Material: Polycarbonate Legend Insert Material: Polyethylene Terephthalate (PET)
 Lens Finish: Glossy Diffuser Finish: Textured

Standard Alternating Legend Pairs



Green/Red or Blue/Amber



Green/Red or Blue/Amber



Green/Red or Blue/Amber



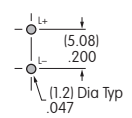
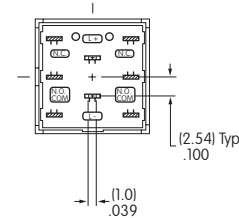
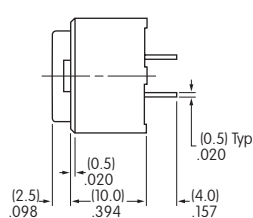
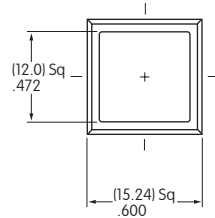
Green/Red or Blue/Amber

Cap illumination is alternating Green/Red or Blue/Amber; legend text is black.
 Contact factory for other Alternating Legends.

Legend illustrations are approximate representations of the actual characters on the filters.

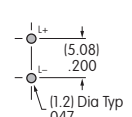
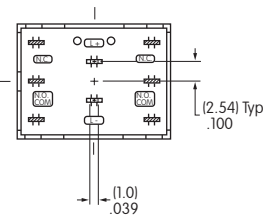
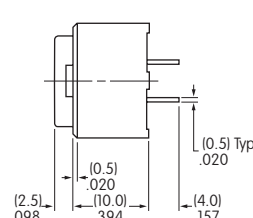
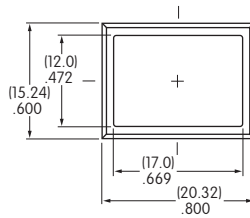
TYPICAL INDICATOR DIMENSIONS

Square • PCB Mount



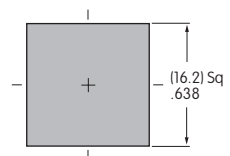
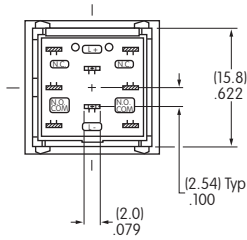
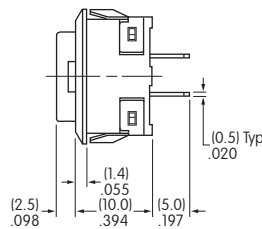
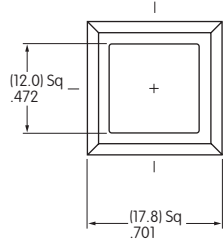
UB01KW035C-JC

Rectangular • PCB Mount



UB03KW035F-FF

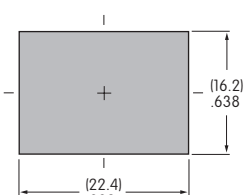
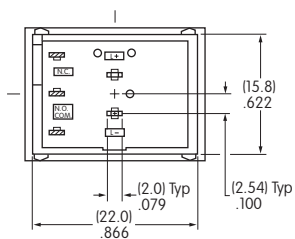
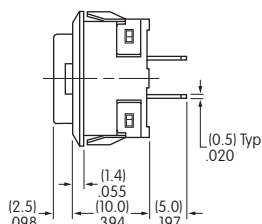
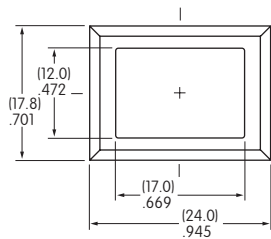
Square • Snap-in Mount • Built-in Bezel



Panel Thickness:
1.0 ~ 3.2mm (.039 ~ .126")

UB04KW015C-JC

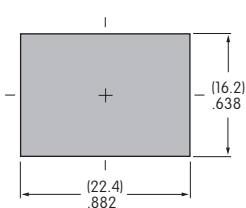
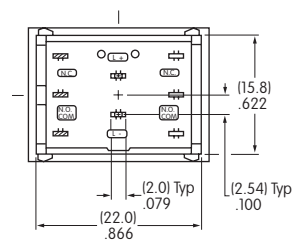
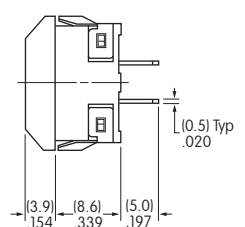
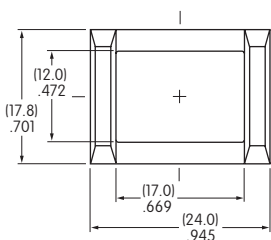
Rectangular • Snap-in Mount • Built-in Bezel



Panel Thickness:
1.0 ~ 3.2mm (.039 ~ .126")

UB06KW015D-DD

Rectangular • Snap-in Mount • Built-in Side Barriers



Panel Thickness:
1.0 ~ 3.2mm (.039 ~ .126")

UB06BKW015F-FF

Toggles

Rockers

Pushbuttons

Programmable Illuminated PB

Keylocks

Rotaries

Slides

Tactiles

Tilt

Touch

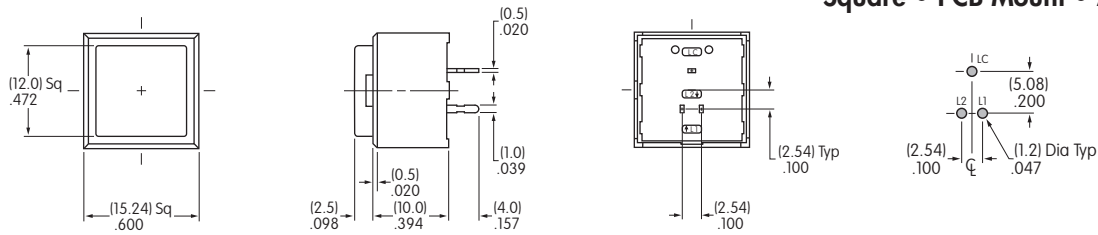
Indicators

Accessories

Supplement

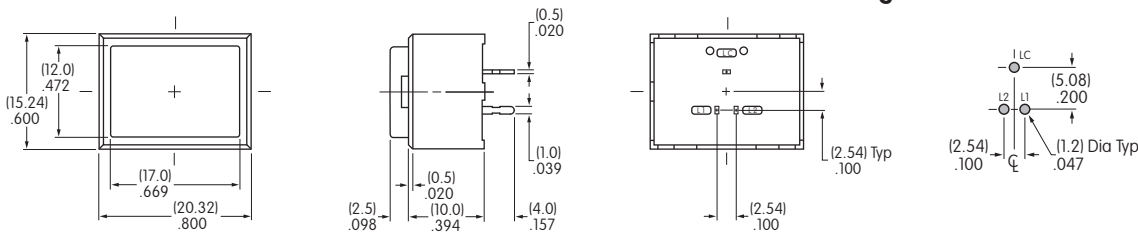
TYPICAL INDICATOR DIMENSIONS

Square • PCB Mount • Alternating Legends



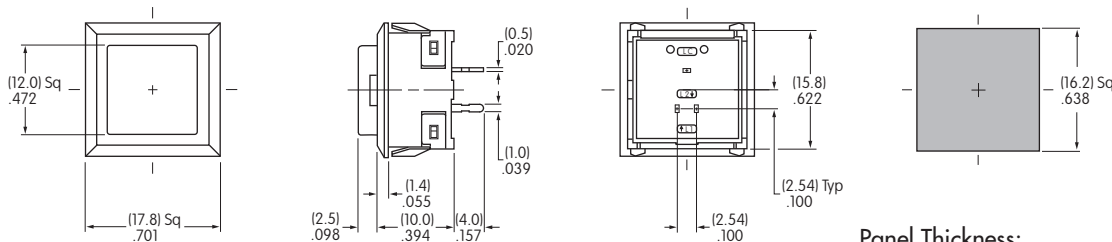
UB01KW036DG-JDG11

Rectangular • PCB Mount • Alternating Legends



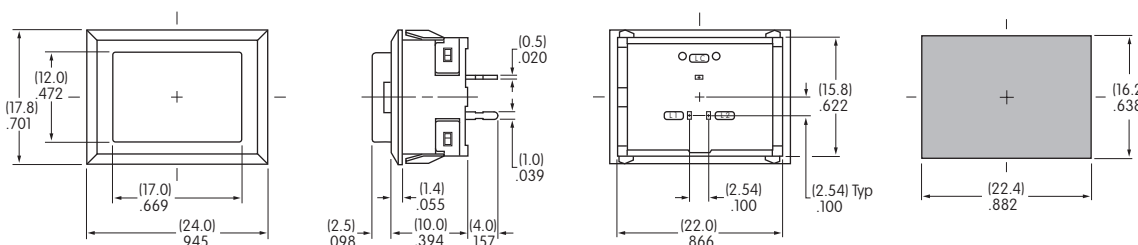
UB03KW016DG-JDG11

Square • Snap-in Mount • Built-in Bezel • Alternating Legends



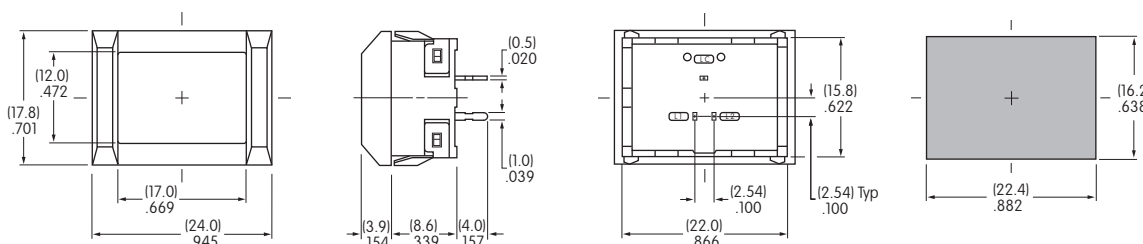
Panel Thickness:
(1.0 ~ 3.2mm) .039 ~ .126" UB04KW016DG-JDG11

Rectangular • Snap-in Mount • Built-in Bezel • Alternating Legends



Panel Thickness:
(1.0 ~ 3.2mm) .039 ~ .126" UB06KW016DG-JDG11

Rectangular • Snap-in Mount • Built-in Side Barriers • Alternating Legends



Panel Thickness:
(1.0 ~ 3.2mm) .039 ~ .126" UB06BKW016DG-JDG11

TYPICAL INDICATOR ORDERING EXAMPLE

UB2

01

K

W03

6CF

—

1JB

Mounting Types

PCB Mounting

01 Square

Snap-in Mounting

04 Square

Housing

K Black

Terminals

W03 Silver PC/Turret

LEDs

Bright LED

5C Red

5D Amber

5F Green

Super Bright LED

6B White

6F Green

6G Blue

Super Bright Bicolor LED

6CF Red/Green

6DG Amber/Blue

Cap Types & Colors

Sculptured Cap Lens/Diffuser Colors

1JB Clear/White

1JC Clear/Red

1JD Clear/Amber

1JF Clear/Green

Beveled Cap & Colors

2B White

2C Red

2D Amber

2F Green

Flat Cap Lens/Diffuser Colors

3JB Clear/White

3JC Clear/Red

3JD Clear/Amber

3JF Clear/Green

Sculptured Cap Lens/Diffuser Color

1JB Clear/White

Beveled Cap & Color

2B White

Flat Cap Lens/Diffuser Color

3JB Clear/White

Sculptured Cap Lens/Diffuser Color

1JB Clear/White

Beveled Cap & Color

2B White

Flat Cap Lens/Diffuser Color

3JB Clear/White

Sculptured Cap with Alternating Legend

4JCF Clear; Red/Green

4JDG Clear; Amber/Blue

Flat Cap with Alternating Legend

5JCF Clear; Red/Green

5JDG Clear; Amber/Blue

Alternating Legends

11 ON (pos) OFF (pos)

12 ON (neg) OFF (neg)

13 START STOP

14 OPEN CLOSE

See Part Numbers Table on Next Page

DESCRIPTION FOR TYPICAL ORDERING EXAMPLE

UB201KW036CF-1JB

Sculptured Cap with Clear Lens, White Diffuser

Red/Green Super Bright Bicolor LED

Square with PCB Mounting



Black Housing

Silver PC/Turret Terminals

Toggle

Rockers

Pushbuttons

Illuminated PB

Programmable

Keylocks

Rotaries

Slides

Tactiles

Tilt

Touch

Indicators

Accessories

Supplement

Part Numbers for Alternating Legends

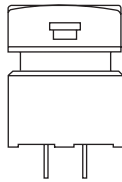
Color	15mm Square Sculptured Cap	15mm Square Flat Cap
	Part Number	Part Number
Red/Green	AT3069JCF11 ~ AT3069JCF14	AT3070JCF11 ~ AT3070JCF14
Amber/Blue	AT3069JDG11 ~ AT3069JDG14	AT3070JDG11 ~ AT3070JDG14

Refer to Ordering Table for Alternating Legend that corresponds with last 2 digits of part number.

MOUNTING TYPES, SHAPES, & TERMINALS

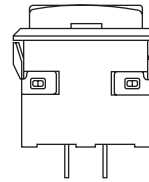
01 PCB Mounting

Square



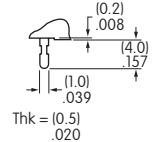
04 Snap-in Mounting

Square with Built-in Bezel



W03 Terminals


Silver PC/Turret



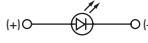
Panel Thickness: .039 ~ .126" (1.0 ~ 3.2mm)

LED COLORS & SPECIFICATIONS

The electrical specifications shown are determined at a basic temperature of 25°C. Polarity marks are on the bottom of the device. If the source voltage exceeds the rated voltage, a ballast resistor is required. The resistor value can be calculated by using the formula in the Supplement section. The LED is an integral part of the indicator and not available separately.

Note for Super Bright: 		Bright			Super Bright			Super Bright Bicolor		Unit
		5C	5D	5F	6B	6F	6G	6CF	6DG	
Color		Red	Amber	Green	White	Green	Blue	Red/Green	Amber/Blue	
Maximum Forward Current	I_{FM}	30	30	25	20	30	30	30/25 *Amber 25/22	30/30	mA
Typical Forward Current	I_F	20	20	20	15	20	20	20/20	15/15	mA
Forward Voltage	V_F	1.85	2.0	2.1	3.3	3.5	3.6	2.1/3.5	2.0/2.8	V
Maximum Reverse Voltage	V_{RM}	5	5	5	5	5	5	4/4	4/4	V
Current Reduction Rate Above 25°C	ΔI_F	0.40	0.42	0.46	0.25	0.50	0.50	0.40/0.33	0.33/0.33	mA/°C
Ambient Temperature Range		-25° ~ +50			-20° ~ +50			-25° ~ +50	-25° ~ +50	°C

Bright Single Color LED with 1 element 

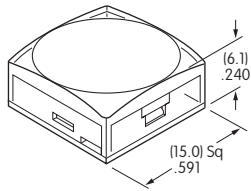
Super Bright Single Color LED with 1 element 

Super Bright Bicolor LED with 2 elements 

*Amber color can be achieved by lighting red and green simultaneously on the bicolor LED (not suitable for Alternating Legends).

CAP TYPES & COLOR COMBINATIONS

1 AT3074
Sculptured

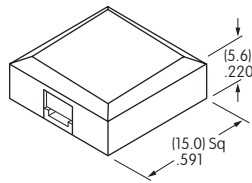


Lens/Diffuser
Colors
Available:

- JB** Clear/White
- JC** Clear/Red
- JD** Clear/Amber
- JF** Clear/Green

Material: Polycarbonate
Finish: Glossy

2 AT3075
Beveled

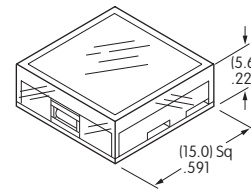


Material: Polycarbonate
Finish: Glossy

Cap
Colors
Available:

- B** White
- C** Red
- D** Amber
- F** Green

3 AT3076
Flat



Material: Polycarbonate
Finish: Glossy

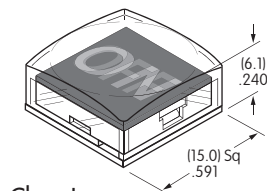
Lens/Diffuser
Colors
Available:

- JB** Clear/White
- JC** Clear/Red
- JD** Clear/Amber
- JF** Clear/Green

Alternating Legend Caps for Super Bright Bicolor LED

AT3069J Sculptured Cap
with Alternating Legend

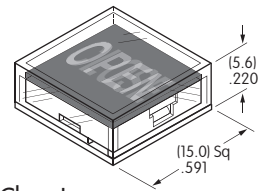
- 4JCF** Red/Green
- 4JDG** Amber/Blue



Clear Lens
Alternating Legend Filter
Material: Polycarbonate

AT3070J Flat Cap with
Alternating Legend

- 5JCF** Red/Green
- 5JDG** Amber/Blue



Clear Lens
Alternating Legend Filter
Finish: Glossy

Standard Alternating Legend Pairs

- 11** ON OFF
Green/Red or Blue/Amber
- 12** ON OFF
Green/Red or Blue/Amber
- 13** START STOP
Green/Red or Blue/Amber
- 14** OPEN CLOSE
Green/Red or Blue/Amber

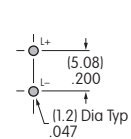
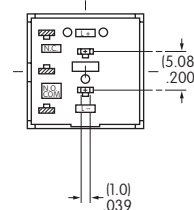
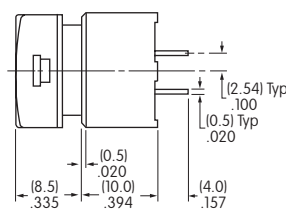
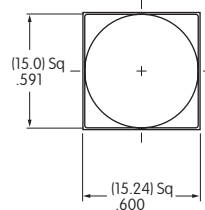
Cap illumination is alternating Green/Red or Blue/Amber; legend text is black. Contact factory for other Alternating Legends.

Legend illustrations are approximate representations of the actual characters on the filters.

Note: Cap Removal Tool available for PCB Mount. See AT093ABC in Accessories & Hardware section for dimensions and other details.

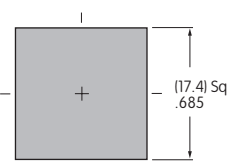
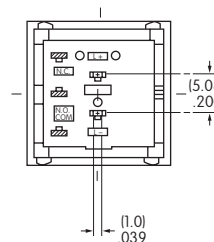
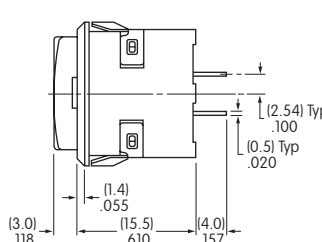
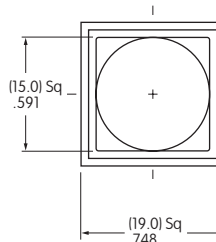
TYPICAL INDICATOR DIMENSIONS

PCB Mount



UB201KW035C-1JC

Snap-in Mount



Panel Thickness:
.039 ~ .126" (1.0 ~ 3.2mm)

Toggles
Rockers
Pushbuttons
Illuminated PB
Programmable
Keylocks
Rotaries
Slides
Tactiles
Tilt
Touch
Indicators
Accessories
Supplement

TYPICAL INDICATOR ORDERING EXAMPLE

YB **04** **K** **W01** — **12** — **FB**

Shapes

Bushing Mounting	
01	Square
02	Round
03	Rectangular
Snap-in Mounting	
04	Square
05	Round
06	Rectangular

Panel Seal

No Code	Without Panel Seal
W	With Panel Seal (Bushing Mount only)

Housing

K	Black only
---	------------

Terminals

W01	Silver Solder Lug/.110" (2.8mm) Quick Connect
-----	--

Lamps

Incandescent Lamp	
05	5-volt
12	12-volt

Bright LED

LED Colors	Resistor
5C Red	No Code No Resistor
5D Amber	05 5-volt
	12 12-volt
5F Green	24 24-volt

Super Bright LED

6B	White
6F	Green
6G	Blue

Bicolor LED

LED Colors	Forward Voltage
2CF Red/Green	02 2-volt (no resistor)
	05 5-volt
	12 12-volt
	24 24-volt

Cap Types & Colors

Solid Cap: Lens/Insert Colors	
BB	White/White
CB	Red/White
EB	Yellow/White
FB	Green/White
GB	Blue/White

LED Cap: Lens/Insert Colors

JB	Clear/White
JC	Clear/Red
JD	Clear/Amber
JF	Clear/Green

LED Cap: Lens/Insert Colors

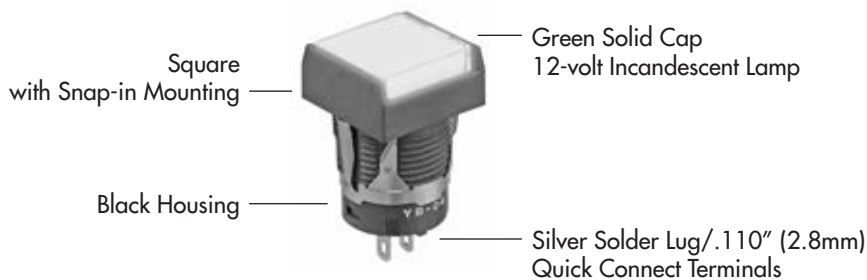
JB	Clear/White
----	-------------

LED Cap: Lens/Insert Colors

JB	Clear/White
----	-------------

DESCRIPTION FOR TYPICAL ORDERING EXAMPLE

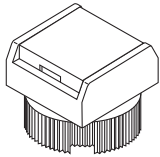
YB04KW01-12-FB



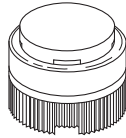
SHAPES & MOUNTING TYPES

Bushing Mounting

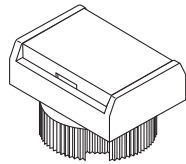
01 Square



02 Round

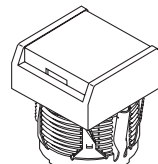


03 Rectangular

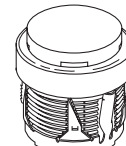


Snap-in Mounting

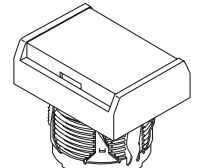
04 Square



05 Round



06 Rectangular



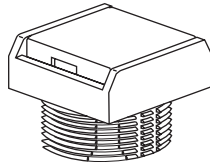
Bezel-barrier is an integral part of the indicator body.

PANEL SEAL

No Code

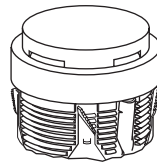
Without Panel Seal

Bushing Mounting



Supplied with mounting nut.

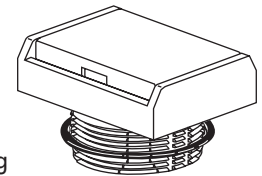
Snap-in Mounting



W

With Panel Seal


Bushing Mounting only



Supplied with mounting nut and o-ring AT089.

INCANDESCENT LAMP & SOLID CAP

The electrical specifications shown are determined at a basic temperature of 25°C.
If the source voltage exceeds the rated voltage, a ballast resistor is required.
The resistor value can be calculated by using the formula in the Supplement section.

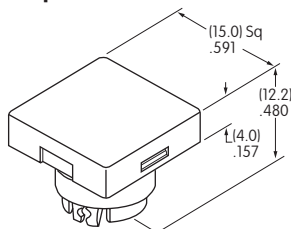
AT611  T-1 Bi-pin		05	12	
	Voltage	V	5V AC	12V AC
	Current	I	115mA	60mA
	MSCP		.150	.150
	Endurance	Hours	7,000 average	
	Ambient Temperature Range		-25°C ~ +50°C	

Solid Cap for Incandescent Lamp

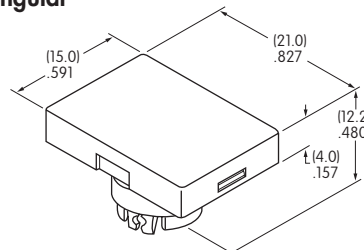
Lens/Insert Colors Available:

- BB** White/White
- CB** Red/White
- EB** Yellow/White
- FB** Green/White
- GB** Blue/White

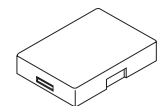
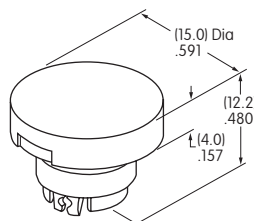
AT3001
Square



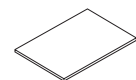
AT3003
Rectangular



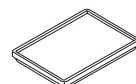
AT3002
Round



Translucent Colored Lens



Translucent White Insert



Translucent White Seal/Filter




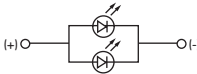
Incandescent Lamp AT611

Materials: Polycarbonate (Lens & Insert)
Thermoplastic Elastomer (Seal/Filter)
Finish: Glossy


BRIGHT LEDS & LED CAPS

The electrical specifications shown are determined at a basic temperature of 25°C.
 If the source voltage exceeds the rated voltage, a ballast resistor is required.
 The resistor value can be calculated by using the formula in the Supplement section.

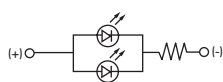
Electrical Specifications for Bright LED without Resistor

Bright AT628   T-1 Bi-pin	Colors Available: 5C Red 5D Amber 5F Green No Code No Resistor	Unit				
	LED Colors	Red	Amber	Green		
	Maximum Forward Current	I_{FM}	40	40	40	mA
	Typical Forward Current	I_F	26	26	26	mA
	Forward Voltage	V_F	1.9	2.0	2.0	V
	Maximum Reverse Voltage	V_{RM}	4	4	4	V
	Current Reduction Rate Above 25°C	ΔI_F	0.50			mA/°C
	Ambient Temperature Range		-25 ~ +50			°C

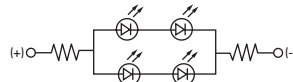
Electrical Specifications for Bright LED with Resistor

Bright AT634  T-1 1/4 Bi-pin	Colors Available: 5C Red 5D Amber 5F Green 05 12 24	Unit				
	Maximum Forward Current	I_{FM}	—	—	—	mA
	Typical Forward Current	I_F	25	20	10	mA
	Forward Voltage	V_F	5	12	24	V
	Maximum Reverse Voltage	V_{RM}	4	8	16	V
	Current Reduction Rate Above 25°C	ΔI_F	—	—	—	mA/°C
	Ambient Temperature Range		-25 ~ +50			°C

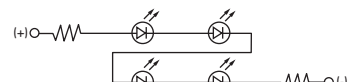
AT634
5-volt,
2-element
with Resistor



AT634
12-volt,
4-element
with Resistor



AT634
24-volt,
4-element
with Resistor

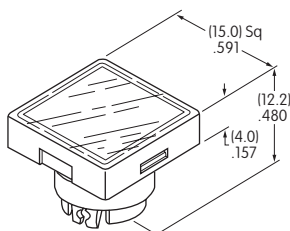


Cap for Bright LED

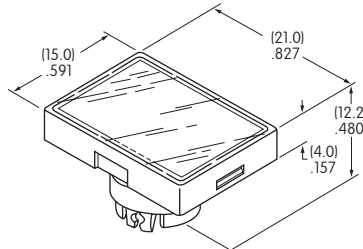
Lens/Insert
Colors Available:

- JB Clear/White
- JC Clear/Red
- JD Clear/Amber
- JF Clear/Green

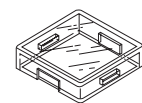
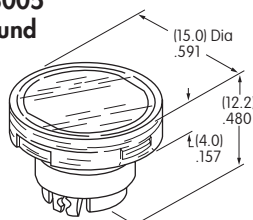
AT3004
Square



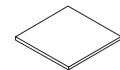
AT3006
Rectangular



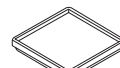
AT3005
Round



Transparent Clear Lens



Translucent Colored Insert



Translucent White Seal/Diffuser






Bright LEDs
AT628 AT634

Materials: Polycarbonate (Lens & Insert)
 Thermoplastic Elastomer (Seal/Diffuser)
 Finish: Glossy

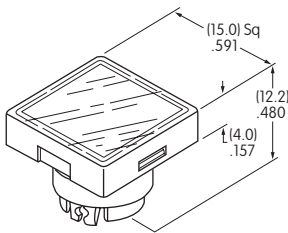
SUPER BRIGHT LEDS & LED CAPS

The electrical specifications shown are determined at a basic temperature of 25°C.
 If the source voltage exceeds the rated voltage, a ballast resistor is required.
 The resistor value can be calculated by using the formula in the Supplement section.

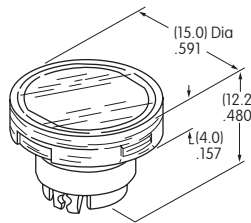
 Super Bright AT625G Blue AT631B White AT632F Green T-1 Bi-pin			<div style="border: 1px solid black; padding: 2px; display: inline-block;">6B</div>	<div style="border: 1px solid black; padding: 2px; display: inline-block;">6F</div>	<div style="border: 1px solid black; padding: 2px; display: inline-block;">6G</div>	Unit
	Colors:	White	Green	Blue		
	Maximum Forward Current	I_{FM}	30	30	30	mA
	Typical Forward Current	I_F	20	20	20	mA
	Forward Voltage	V_F	3.3	3.3	3.3	V
	Maximum Reverse Voltage	V_{RM}	7	7	7	V
	Current Reduction Rate Above 25°C	ΔI_F	0.40	0.40	0.40	mA/°C
	Ambient Temperature Range		-25 ~ +50			°C

Cap for Super Bright LED

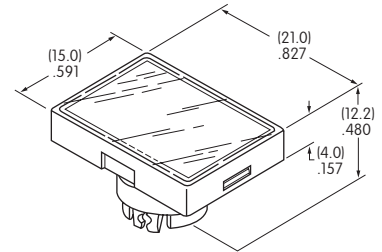
AT3014
Square



AT3015
Round

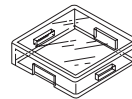


AT3016
Rectangular



Lens/Insert
Colors Available:

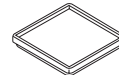
JB Clear/White



Transparent Clear Lens



Translucent White Insert



Translucent White Seal/Diffuser




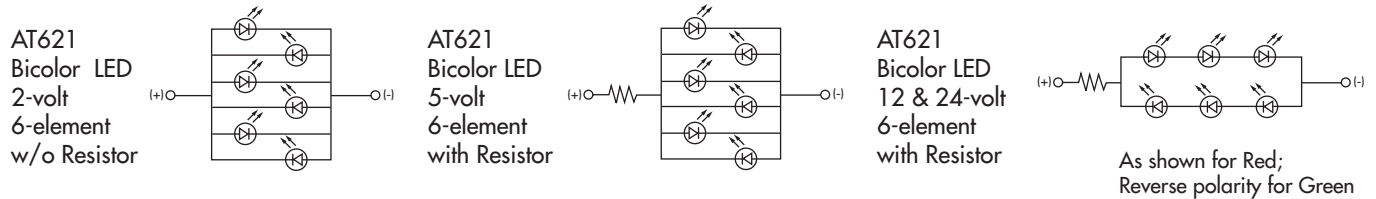
Super Bright LEDs
AT625 AT631
AT632

Materials: Polycarbonate (Lens & Insert)
Thermoplastic Elastomer (Seal/Diffuser)

BICOLOR LED & LED CAPS

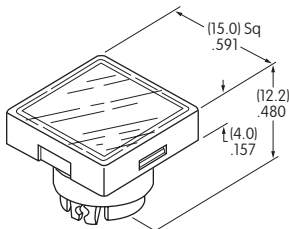
The electrical specifications shown are determined at a basic temperature of 25°C.
 If the source voltage exceeds the rated voltage, a ballast resistor is required.
 The resistor value can be calculated by using the formula in the Supplement section.

Bicolor AT621 2CF Red/Green  T-1½ Bi-pin	Bicolor LED is translucent white in OFF state.		02	05	12	24	Unit
	Maximum Forward Current	I_{FM}	60	60	20	12	mA
	Typical Forward Current	I_F	45	45	15	10	mA
	Forward Voltage (Red/Green)	V_F	1.9 / 2.1	5	12	24	V
	Current Reduction Rate Above 25°C	ΔI_F	0.80	----	----	----	mA/°C
	Ambient Temperature Range		-25 ~ +50				°C

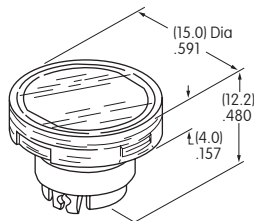


LED Caps

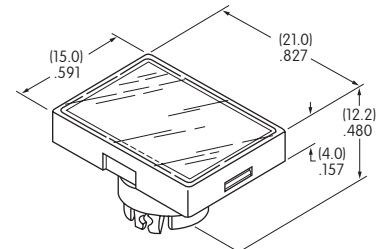
AT3004 Square



AT3005 Round

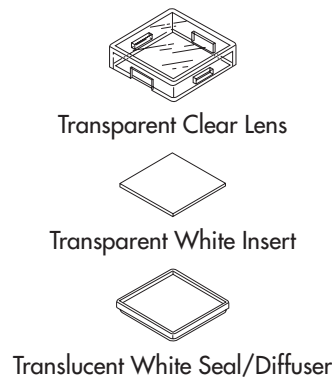


AT3006 Rectangular



Lens/Insert Colors Available:

JB Clear/White

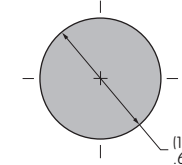
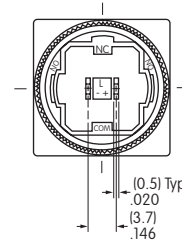
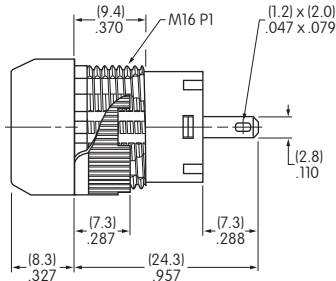
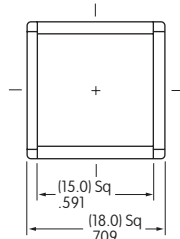


Materials: Polycarbonate (Lens & Insert)
 Thermoplastic Elastomer (Seal/Diffuser)



TYPICAL INDICATOR DIMENSIONS

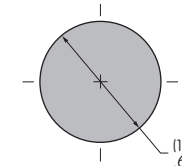
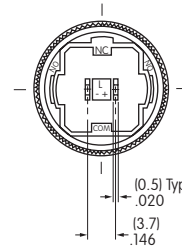
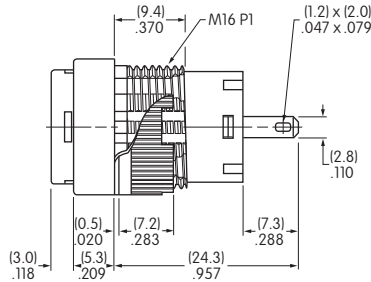
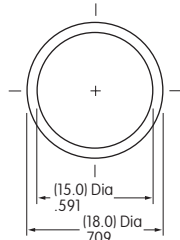
Square • Bushing Mounting



YB01KW01-12-CB

Panel Thickness
.020" ~ .197" (0.5mm ~ 5.0mm)

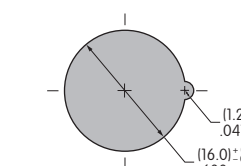
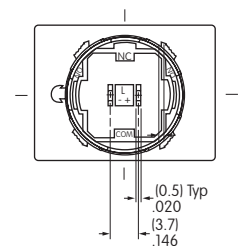
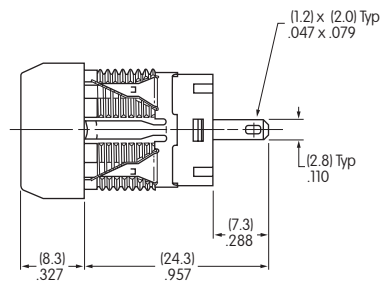
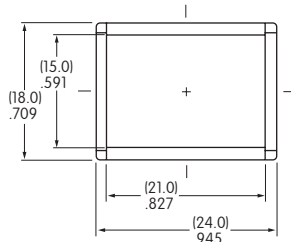
Round • Panel Seal



YB02WKW01-12-GB

Panel Thickness
.020" ~ .197" (0.5mm ~ 5.0mm)

Rectangular • Snap-in Mounting



YB06KW01-12-EB

Panel Thickness
.039" ~ .138" (1.0mm ~ 3.5mm)