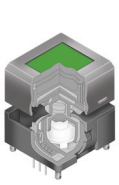


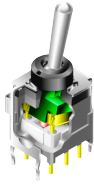
everything starts here.

SEVEN QUESTIONS TO SPECIFY A SWITCH

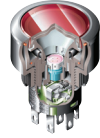
1. What type of switch (actuator)?



Programmable



Toggle



Pushbutton



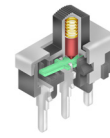
Rocker



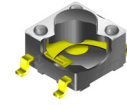
Keylock



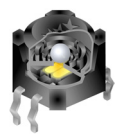
Rotary



Slide



Tactile



Tilt

2. What are the electrical requirements?

- Voltage
- Current (6A @ 125V AC)
- Logic Level
- Number of Poles/Throws
- Illumination
- Power Circuit
- Loads:
 - Resistive
 - Inductive
 - Motor

3. What size switch?

- Ultra-Miniature
- Subminiature
- Miniature
- Standard

4. What type of terminations?

- Solder Lug (wire harness)
- Screw Terminals
- PCB
- SMT
- Quick Connect

5. How is switch mounted into device?

- Panel Bushing Mount (threads)
- Snap-In Panel Mount
- PCB Mount
- SMT

6. What is the industry? For example:

- Broadcast
- Audio
- Automation
- Medical
- Telecom
- Security
- Computer

7. Are there any unique requirements? For example:

- Sealed
- IP Ratings
- Illuminated
- Standards
- Approvals
- Value-Added Services
 - Custom Printing
 - Legends
 - Wire Assembly