

# Change Notice

## JF Series

### Change to Material of JF Series Movable Contact

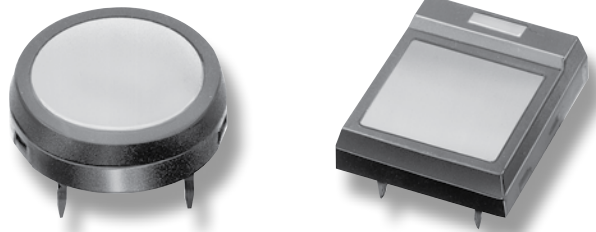
Type of Change:

- Engineering     Part Number  
 Product         Appearance

JF Series tactile switches will have a change to the material of the movable contact. This change will affect the rectangular body illuminated switches, and the round or square body non-illuminated switches with any shape of actuator. The spring material has been improved from phosphor bronze to stainless steel.

#### JF Series Movable Contact Material

- All Illuminated Models
- All Non-illuminated Models
- Standard & Custom Models



Movable Contact Material	
Before Change	After Change
Phosphor Bronze Spring	Stainless Steel Spring

#### Availability

Change to material of the JF Series movable contact is effective with January 2010 production.

**NIKK**  
SWITCHES

www.nkkswitches.com  
1.877.2BUYNKK (228.9655)

7850 East Gelding Drive • Scottsdale, AZ 85260  
Telephone 480.991.0942 • Fax 480.998.1435