

Change Notice

UB2 Series

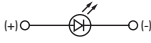

Super Bright LED and Specification Change

Type of Change:

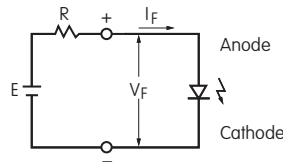
- Engineering Part Number
- Product Appearance



All models of UB2 Pushbuttons and Indicators with super bright LEDs will have a change to the specifications for Blue (6G). The change will effect both standard and custom products for the UB2 Series.

SUPER BRIGHT LED CODES & SPECIFICATIONS					
 Super Bright Single Color LED with one element Electrical specifications are determined at a basic temperature of 25°C. The lamp circuit is isolated and requires an external power source.	Super Bright LEDs are Electrostatic Sensitive. 	Color	Before Change	After Change	
		Maximum Forward Current	I_{FM}	25mA	30mA
		Typical Forward Current	I_F	20mA	20mA
		Forward Voltage	V_F	3.6V	3.6V
		Maximum Reverse Voltage	V_{RM}	5V	5V
		Current Reduction Rate Above 25°C	ΔI_F	0.40mA/°C	0.50mA/°C
		Ambient Temperature Range		-20°C ~ +50°C	-20°C ~ +50°C

If the source voltage exceeds the rated voltage, a ballast resistor is required. The resistor value can be calculated by using the formula shown here.



$$R = \frac{E - V_F}{I_F}$$

Where: R = Resistor Value (Ohms)
 E = Source Voltage (V)
 V_F = Forward Voltage (V)
 I_F = Forward Current (A)

Notes:

There are no changes to external dimensions for the LED. Contact factory if further details are needed.

Effective Date

Changes to UB2 Series LEDs will be effective with February 2014 production.



<http://www.nkkswitches.com> • 1.877.2BUYNKK (228.9655)

7850 East Gelding Drive • Scottsdale, AZ 85260 • Telephone 480.991.0942 • Fax 480.998.1435