

# Change Notice KP Series Illuminated Pushbuttons

## Change of Super Bright Bicolor LED Specifications for KP Series

Type of Change:

- Engineering     Part Number  
 Product         Appearance

All models of KP01 and KP02 Pushbuttons with super bright bicolor LEDs will have a change to the specifications for both Red and Green. The change will effect all standard and custom products for the KP Series.

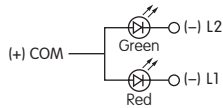


KP01 Series



KP02 Series

### SUPER BRIGHT BICOLOR LED SPECIFICATIONS



KP Series illuminated pushbuttons are electrostatic sensitive.

The electrical specifications shown are determined at a basic temperature of 25°C.

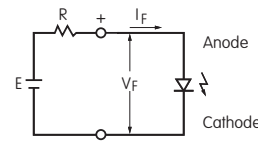
Amber can be achieved by simultaneous illumination of Red and Green.

	Colors	Before Change		After Change		Unit
		Red	Green	Red	Green	
Standard Luminous Intensity	$I_V$	* 253 ~ 270	* 223 ~ 272	290	270	mcd
Maximum Forward Current	$I_{FM}$	30 (25 for Amber)	25 (22 for Amber)	30 (25 for Amber)	25 (22 for Amber)	mA
Typical Forward Current	$I_F$	15	15	15	5	mA
Typical Forward Current for Alternating Legends	$I_F$	/		25	15	mA
Forward Voltage	$V_F$	2.1	3.2	2.0	3.1	V
Maximum Power Dissipation	$P_D$	63	80	72	88	mW
Maximum Reverse Voltage	$V_{RM}$	5	5	5	7	V
Wavelength at Maximum Emission	$\lambda$	630 ~ 640	520 ~ 535	620 ~ 630	528 ~ 538	nm
Current Reduction Rate Above 25°C	$\Delta I_F$	0.40	0.36	0.40	0.36	mA/°C
Ambient Temperature Range		-25 ~ +50		-25 ~ +50		°C

\* Measured Value (Reference Data)

#### Notes

- LEDs are an integral part of the switch and are not available separately.
- The LED circuit is isolated and requires an external power source.
- If the source voltage exceeds the rated voltage, a ballast resistor is required. The resistor value can be calculated by using the formula shown here.
- The changes to KP Series LEDs do not affect any external dimensions of the switches.
- Contact the factory if further details are needed.



$$R = \frac{E - V_F}{I_F}$$

Where: R = Resistor Value (Ohms)  
 E = Source Voltage (V)  
 $V_F$  = Forward Voltage (V)  
 $I_F$  = Forward Current (A)

#### Effective Date

Changes to KP Series LEDs will be effective with June 2014 production.

**NIKK**  
SWITCHES

<http://www.nkkswitches.com> • 1.877.2BUYNKK (228.9655)

7850 East Gelding Drive • Scottsdale, AZ 85260 • Telephone 480.991.0942 • Fax 480.998.1435