

Change Notice

TL Series

Change of Super Bright LED Specifications for TL22DNAW016F (Green LED)

Type of Change:


- Engineering Part Number
 Product Appearance

The TL Series illuminated toggle TL22DNAW016F with the green super bright LED will have changes to the specifications. The table below displays before and after modifications for this part number.

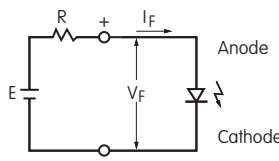


TL22DNAW016F

SUPER BRIGHT LED CODES & SPECIFICATIONS

Super Bright LEDs are Electrostatic Sensitive.		Color	Before Change	After Change
			6F Green	6F Green
Electrical specifications are determined at a basic temperature of 25°C. The lamp circuit is isolated and requires an external power source.	Maximum Forward Current	I_{FM}	30mA	30mA
	Typical Forward Current	I_F	20mA	20mA
	Forward Voltage	V_F	3.5V	3.3V
			($I_F = 20$)	($I_F = 20$)
	Maximum Reverse Voltage	V_{RM}	5V	7V
	Current Reduction Rate Above 25°C	ΔI_F	0.50mA/°C	0.40mA/°C
Ambient Temperature Range		-10°C ~ +55°C	-10°C ~ +55°C	

If the source voltage exceeds the rated voltage, a ballast resistor is required. The resistor value can be calculated by using the formula shown here.



$$R = \frac{E - V_F}{I_F}$$

Where: R = Resistor Value (Ohms)
 E = Source Voltage (V)
 V_F = Forward Voltage (V)
 I_F = Forward Current (A)

Contact factory if further details are needed.

Effective Date

Changes to LEDs will be effective with October 2014 production.

NKK
SWITCHES

<http://www.nkkswitches.com> • 1.877.2BUYNKK (228.9655)

7850 East Gelding Drive • Scottsdale, AZ 85260 • Telephone 480.991.0942 • Fax 480.998.1435