

Change Notice

KP Series

Discontinuation of RGB 8-Pin Pushbuttons, Replacement with RGBP 4-Pin Pushbuttons

Type of Change:


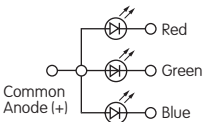
- Engineering Part Number
 Product Appearance

The KP Series 8-pin illuminated pushbuttons will be discontinued and replaced with 4-pin pushbuttons. There are variations between the LED specifications, which are highlighted below. Dimensions for the LED and the LED holder are different between the 8-pin and 4-pin, but these differences are not visible since they are inside the switch case. Differences in terminal detail and footprints are displayed on page 2. The discontinuation will effect all 8-pin models, both standard and custom, and effected standard part numbers with 4-pin replacements are on the following pages.



KP Illuminated Pushbuttons

DIFFERENCES BETWEEN LED SPECIFICATIONS

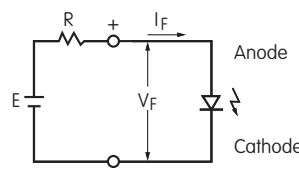
		Before Change 8-Pin			After Change 4-Pin			
		RGB			RGBP			
		Color	Red	Green	Blue	Red	Green	Blue
	Maximum Forward Current	I_{FM}	30mA	30mA	30mA	50mA	30mA	30mA
	Typical Forward Current	I_F	20V	14V	9V	15V	16V	10V
Electrical specifications are determined at a basic temperature of 25°C	* Forward Voltage	V_F	2.0V	2.9V	2.9V	2.0V	2.9V	2.9V
LED is colored in OFF state	Power Peak Dissipation	P_D	60	80	80	100	80	80
LEDs are an integral part of the switch and are not available separately	Maximum Reverse Voltage	V_{RM}	5V	5V	5V	5V	5V	5V
	Dominant Wavelength	λ_d	621.5nm	522.5nm	472.5nm	620nm	525nm	467nm
For applications that require white illumination, contact the factory	Current Reduction Rate Above 25°C	ΔI_F	0.50mA/°C	0.50mA/°C	0.50mA/°C	0.75mA/°C	0.25mA/°C	**0.22mA/°C
	Ambient Temperature Range		-25°C ~ +50°C			-25°C ~ +50°C		

* Forward Voltage (V_F) and Dominant Wavelength (λ_d) are Typical Value measured by Typical Forward Current (I_F).

**Current Reduction Rate (ΔI_F) Above 40°C

Notes

- The LED circuit is isolated and requires an external power source.
- For best results and safe use of the LEDs, the supply voltage should be more than the LED forward voltage. In addition, an appropriately valued ballast resistor should be used. Without the ballast resistor, the LED will be damaged or destroyed. The resistor value can be calculated by using the formula shown here.
- Contact information is below if more details are needed.



$$R = \frac{E - V_F}{I_F}$$

Where: R = Resistor Value (Ohms)
 E = Source Voltage (V)
 V_F = Forward Voltage (V)
 I_F = Forward Current (A)

Effective Date

Discontinuation of KP Series 8-pin models will be effective September 30, 2021. Replacement 4-pin models are currently available.

NKK
SWITCHES

www.nkkswitches.com • 1.877.2BUYNKK (228.9655)

7850 East Gelding Drive • Scottsdale, AZ 85260 • Telephone 480.991.0942 • Fax 480.998.1435

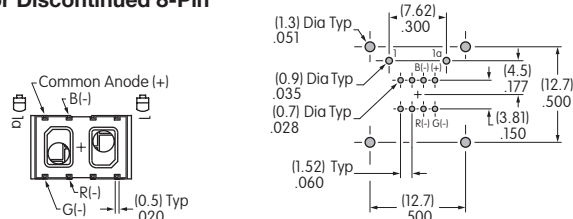
Change Notice

KP Series

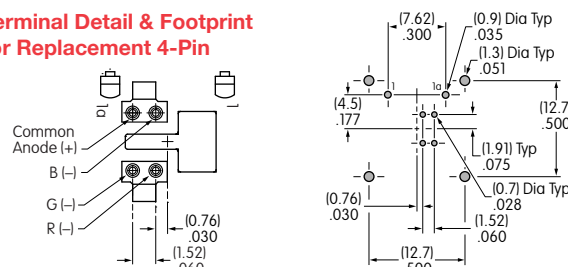
Discontinuation of RGB 8-Pin Pushbuttons, Replacement with RGBP 4-Pin Pushbuttons

DIFFERENCES BETWEEN TERMINALS

Terminal Detail & Footprint for Discontinued 8-Pin



Terminal Detail & Footprint for Replacement 4-Pin



Effected Standard & Replacement Part Numbers for KP01

Discontinued 8-Pin Models	Replacement 4-Pin Models
KP0115ACAKG03RGB	KP0115ACAKG03RGBP
KP0115ACAKG03RGB-1FJB	KP0115ACAKG03RGBP-1FJB
KP0115ACAKG03RGB-1SJB	KP0115ACAKG03RGBP-1SJB
KP0115ACAKG03RGB-1TJB	KP0115ACAKG03RGBP-1TJB
KP0115ACBKG03RGB	KP0115ACBKG03RGBP
KP0115ACBKG03RGB-2FJB	KP0115ACBKG03RGBP-2FJB
KP0115ACBKG03RGB-2SJB	KP0115ACBKG03RGBP-2SJB
KP0115ACBKG03RGB-2TJB	KP0115ACBKG03RGBP-2TJB
KP0115ACBKG03RGB-3FJB	KP0115ACBKG03RGBP-3FJB
KP0115ACBKG03RGB-3SJB	KP0115ACBKG03RGBP-3SJB
KP0115ACBKG03RGB-3TJB	KP0115ACBKG03RGBP-3TJB
KP0115ACBKG03RGBJB	Contact NKK Switches
KP0115ANAKG03RGB	KP0115ANAKG03RGBP
KP0115ANAKG03RGB-1FJB	KP0115ANAKG03RGBP-1FJB
KP0115ANAKG03RGB-1SJB	KP0115ANAKG03RGBP-1SJB
KP0115ANAKG03RGB-1TJB	KP0115ANAKG03RGBP-1TJB
KP0115ANBKG03RGB	KP0115ANBKG03RGBP
KP0115ANBKG03RGB-2FJB	KP0115ANBKG03RGBP-2FJB
KP0115ANBKG03RGB-2JB	Contact NKK Switches
KP0115ANBKG03RGB-2SJB	KP0115ANBKG03RGBP-2SJB
KP0115ANBKG03RGB-2TJB	KP0115ANBKG03RGBP-2TJB
KP0115ANBKG03RGB-3FJB	KP0115ANBKG03RGBP-3FJB
KP0115ANBKG03RGB-3JB	Contact NKK Switches
KP0115ANBKG03RGB-3SJB	KP0115ANBKG03RGBP-3SJB
KP0115ANBKG03RGB-3TJB	KP0115ANBKG03RGBP-3TJB



www.nkkswitches.com • 1.877.2BUYNKK (228.9655)

7850 East Gelding Drive • Scottsdale, AZ 85260 • Telephone 480.991.0942 • Fax 480.998.1435

Change Notice

KP Series

Discontinuation of RGB 8-Pin Pushbuttons, Replacement with RGBP 4-Pin Pushbuttons

Effected Standard & Replacement Part Numbers for KP02	
Discontinued 8-Pin Models	Replacement 4-Pin Models
KP0215ACAKG03RGB	KP0215ACAKG03RGBP
KP0215ACAKG03RGB-1FJB	KP0215ACAKG03RGBP-1FJB
KP0215ACAKG03RGB-1SJB	KP0215ACAKG03RGBP-1SJB
KP0215ACAKG03RGB-1TJB	KP0215ACAKG03RGBP-1TJB
KP0215ACBKG03RGB	KP0215ACBKG03RGBP
KP0215ACBKG03RGB-2FJB	KP0215ACBKG03RGBP-2FJB
KP0215ACBKG03RGB-2SJB	KP0215ACBKG03RGBP-2SJB
KP0215ACBKG03RGB-2TJB	KP0215ACBKG03RGBP-2TJB
KP0215ACBKG03RGB-3FJB	KP0215ACBKG03RGBP-3FJB
KP0215ACBKG03RGB-3SJB	KP0215ACBKG03RGBP-3SJB
KP0215ACBKG03RGB-3TJB	KP0215ACBKG03RGBP-3TJB
KP0215ANAKG03RGB	KP0215ANAKG03RGBP
KP0215ANAKG03RGB-1FJB	KP0215ANAKG03RGBP-1FJB
KP0215ANAKG03RGB-1SJB	KP0215ANAKG03RGBP-1SJB
KP0215ANAKG03RGB-1TJB	KP0215ANAKG03RGBP-1TJB
KP0215ANBKG03RGB	KP0215ANBKG03RGBP
KP0215ANBKG03RGB-2FJB	KP0215ANBKG03RGBP-2FJB
KP0215ANBKG03RGB-2SJB	KP0215ANBKG03RGBP-2SJB
KP0215ANBKG03RGB-2TJB	KP0215ANBKG03RGBP-2TJB
KP0215ANBKG03RGB-3FJB	KP0215ANBKG03RGBP-3FJB
KP0215ANBKG03RGB-3SJB	KP0215ANBKG03RGBP-3SJB
KP0215ANBKG03RGB-3TJB	KP0215ANBKG03RGBP-3TJB
KP0215ASAKG03RGB	KP0215ASAKG03RGBP
KP0215ASAKG03RGB-1FJB	KP0215ASAKG03RGBP-1FJB
KP0215ASAKG03RGB-1SJB	KP0215ASAKG03RGBP-1SJB
KP0215ASAKG03RGB-1TJB	KP0215ASAKG03RGBP-1TJB
KP0215ASBKG03RGB	KP0215ASBKG03RGBP
KP0215ASBKG03RGB-2FJB	KP0215ASBKG03RGBP-2FJB
KP0215ASBKG03RGB-2SJB	KP0215ASBKG03RGBP-2SJB
KP0215ASBKG03RGB-2TJB	KP0215ASBKG03RGBP-2TJB
KP0215ASBKG03RGB-3FJB	KP0215ASBKG03RGBP-3FJB
KP0215ASBKG03RGB-3SJB	KP0215ASBKG03RGBP-3SJB
KP0215ASBKG03RGB-3TJB	KP0215ASBKG03RGBP-3TJB



www.nkkswitches.com • 1.877.2BUYNKK (228.9655)

7850 East Gelding Drive • Scottsdale, AZ 85260 • Telephone 480.991.0942 • Fax 480.998.1435