

Change Notice

FP01 Series

Changes to Specifications for FP01 Pushbuttons with Green LEDs

Type of Change:

- Engineering Part Number
 Product Appearance

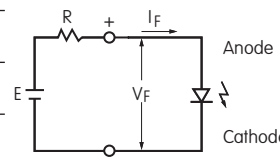
The Green LED for FP01 Series will be changing. This will result in different specifications, as displayed on the following table. The revision applies to standard and custom pushbuttons. Following are comparisons between the specifications and effected standard part numbers.



FP01 Series Pushbuttons with Green LEDs will Change

CHANGES TO LED SPECIFICATIONS			
Electrical specifications are determined at a basic temperature of 25°C.		Before Change	After Change
Single Element LED	Color	F	F
Maximum Forward Current	I_{FM}	25mA	30mA
Typical Forward Current	I_F	20mA	20mA
Forward Voltage	V_F	2.25V	2.1V
Maximum Reverse Voltage	V_{RM}	5V	10V
Current Reduction Rate Above 25°C	ΔI_F	0.40mA/°C	0.40mA/°C
Ambient Temperature Range		-25°C ~ +50°C	

LEDs are an integral part of the switch and are not available separately.



$$R = \frac{E - V_F}{I_F}$$

Where: R = Resistor Value (Ohms)
 E = Source Voltage (V)
 V_F = Forward Voltage (V)
 I_F = Forward Current (A)

Notes

- The LED circuit is isolated and requires an external power source.
- If the source voltage is greater than the LED's rated voltage, a ballast resistor must be connected in series with the LED. The resistor value can be calculated by using the formula shown above.
- There are no changes to any other specifications or external dimensions.
- Contact the factory if further details are needed.

FP01 Part Numbers	
FP0115CAC1FF	FP0115CAC1BF
FP0115CAC1FF-C2	FP0115CAC1BF-C2
FP0115CAC1FF-C3	FP0115CAC1BF-C3

Effective Date

LED changes for FP01 Series with Green LEDs will be effective June 2019.

NKK
SWITCHES

www.nkkswitches.com • 1.877.2BUYNKK (228.9655)

7850 East Gelding Drive • Scottsdale, AZ 85260 • Telephone 480.991.0942 • Fax 480.998.1435