

Change Notice

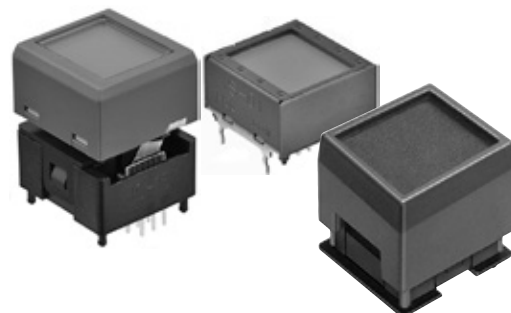
IS Series

Changes for IC Chip in SmartDisplay™ 64 x 32 Switches & Displays

Type of Change:

- ☒ Engineering ☐ Part Number
☒ Product ☐ Appearance

The original Change Notice CN-0350 released April 2019 is being reissued as CN-0350-A. The new changes are highlighted in red and include the addition of the pushbutton IS15EBFP4RGB (photo at far right), new Notes, and new Effective Date.



IC Chip Change for IS 64 x 32 Switches & Displays

IS Series 64 x 32 switches and displays will have a change in the IC chip. This revision will apply to the **SmartDisplay** high resolution compact and **long travel** pushbuttons and display, both standard and custom models. The part numbers are on the following table.

| IS Series Standard Part Numbers | |
|---------------------------------|------------|
| Pushbuttons | Display |
| IS15ESBFP4RGB (Compact) | IS01EBFRGB |
| IS15EBFP4RGB (Long Travel) | |

Notes

The following can help ensure the best performance of these products:

- Commands may be executed consecutively (no need to wait between commands), except for display data.
- For display data, set an interval of 16msec or more from the end of previous data reception to the start of the next command reception.
- Contact information is below if more details are needed.

Effective Date

Changes for the IS Series IC Chip will be effective **February 2024**.

This change was initially effective from October 2019 for certain custom products, as in custom orders.

NKK
SWITCHES

www.nkkswitches.com • 1.877.2BUYNKK (228.9655)

7850 East Gelding Drive • Scottsdale, AZ 85260 • Telephone 480.991.0942 • Fax 480.998.1435

2019/04/16 Engineering Department

2023/07/31 CN-0350-A