

Change Notice

UB Series

Changes for Super Bright White LEDs in UB Series Pushbuttons & Indicators

Type of Change:



- Engineering Part Number
 Product Appearance

The Super Bright White LEDs for UB Series pushbutton switches and indicators will be changing. Both standard and custom pushbuttons and indicators are included in the revision. The change will effect electrical specifications, which are compared below with the new specifications. Part numbers for effected standard switches and indicators are shown on the following page.



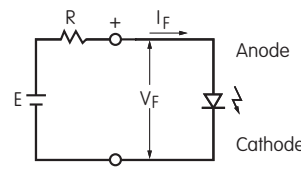
UB Series with Super Bright White LED

CHANGES TO SPECIFICATIONS FOR SUPER BRIGHT WHITE LED

<p>The electrical specifications shown are determined at a basic temperature of 25°C. Polarity marks are on bottom of switch. The LED is an integral part of the switch and not available separately.</p> 	Super Bright LEDs are Electrostatic Sensitive		
	<p>Before Change 6B</p>	<p>After Change 6B</p>	
Maximum Forward Current	I_{FM}	20mA	20mA
Typical Forward Current	I_F	15mA	15mA
Forward Voltage	V_F	3.3V	3.1V
Maximum Reverse Voltage	V_{RM}	5V	5V
Current Reduction Rate Above 25°C	ΔI_F	0.25mA/°C	0.25mA/°C
Ambient Temperature Range		-25°C ~ +50°C	-25°C ~ +50°C

Notes

- The LED circuit is isolated and requires an external power source.
- For best results and safe use of the LEDs, the supply voltage should be more than the LED forward voltage. In addition, an appropriately valued ballast resistor should be used. Without the ballast resistor, the LED will be damaged or destroyed. The resistor value can be calculated by using the formula shown here.
- There are no changes to the switches' external dimensions.
- Contact information is below if more details are needed.



$$R = \frac{E - V_F}{I_F}$$

Where: R = Resistor Value (Ohms)
 E = Source Voltage (V)
 V_F = Forward Voltage (V)
 I_F = Forward Current (A)

Effective Date

Changes for UB Series Illuminated Pushbuttons and Indicators with Super Bright White LEDs will be effective March 2022.

NKK
SWITCHES

www.nkkswitches.com • 1.877.2BUYNKK (228.9655)

7850 East Gelding Drive • Scottsdale, AZ 85260 • Telephone 480.991.0942 • Fax 480.998.1435

Change Notice

UB Series

Changes for Super Bright White LEDs in UB Series Pushbuttons & Indicators

EFFECTED STANDARD PART NUMBERS FOR SWITCHES		
UB15SKW036B-JB	UB25RKG036B-AB	UB26NKG016B-JB
UB15RKW036B-JB	UB26SKW036B-AB	UB26NBKG016B-JB
UB15SKG036B-JB	UB26RKW036B-AB	UB15KKW016B-AB
UB15RKG036B-JB	UB26SKG036B-AB	UB15NKW016B-AB
UB16SKW036B-JB	UB26RKG036B-AB	UB15NBKW016B-AB
UB16RKW036B-JB	UB15KKW016B-JB	UB15KKG016B-AB
UB16SKG036B-JB	UB15NKW016B-JB	UB15NKG016B-AB
UB16RKG036B-JB	UB15NBKW016B-JB	UB15NBKG016B-AB
UB25SKW036B-JB	UB15KKG016B-JB	UB16KKW016B-AB
UB25RKW036B-JB	UB15NKG016B-JB	UB16NKW016B-AB
UB25SKG036B-JB	UB15NBKG016B-JB	UB16NBKW016B-AB
UB25RKG036B-JB	UB16KKW016B-JB	UB16KKG016B-AB
UB26SKW036B-JB	UB16NKW016B-JB	UB16NKG016B-AB
UB26RKW036B-JB	UB16NBKW016B-JB	UB16NBKG016B-AB
UB26SKG036B-JB	UB16KKG016B-JB	UB25KKW016B-AB
UB26RKG036B-JB	UB16NKG016B-JB	UB25NKW016B-AB
UB15SKW036B-AB	UB16NBKG016B-JB	UB25NBKW016B-AB
UB15RKW036B-AB	UB25KKW016B-JB	UB25KKG016B-AB
UB15SKG036B-AB	UB25NKW016B-JB	UB25NKG016B-AB
UB15RKG036B-AB	UB25NBKW016B-JB	UB25NBKG016B-AB
UB16SKW036B-AB	UB25KKG016B-JB	UB26KKW016B-AB
UB16RKW036B-AB	UB25NKG016B-JB	UB26NKW016B-AB
UB16SKG036B-AB	UB25NBKG016B-JB	UB26NBKW016B-AB
UB16RKG036B-AB	UB26KKW016B-JB	UB26KKG016B-AB
UB25SKW036B-AB	UB26NKW016B-JB	UB26NKG016B-AB
UB25RKW036B-AB	UB26NBKW016B-JB	UB26NBKG016B-AB
UB25SKG036B-AB	UB26KKG016B-JB	---

EFFECTED STANDARD PART NUMBERS FOR INDICATORS		
UB01KW036B-JB	UB04KW016B-JB	UB04KW016B-AB
UB03KW036B-JB	UB06KW016B-JB	UB06KW016B-AB
UB01KW036B-AB	UB06BKW016B-JB	UB06BKW016B-AB
UB03KW036B-AB	---	---



www.nkkswitches.com • 1.877.2BUYNKK (228.9655)
 7850 East Gelding Drive • Scottsdale, AZ 85260 • Telephone 480.991.0942 • Fax 480.998.1435