

# Change Notice

# UB2 Series

## Changes for Super Bright Blue LEDs in UB2 Series Pushbuttons & Indicators

Type of Change:

- Engineering     Part Number
- Product         Appearance



**UB2 Series with Super Bright Blue LED Will Have Changes**

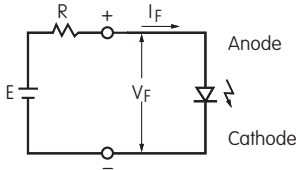
The Super Bright Blue LEDs for UB2 Series pushbutton switches and indicators will be changing. Both standard and custom pushbuttons and indicators are included in the revision. The change will effect electrical specifications, which are compared below. It will also effect the LED terminal dimensions and terminal plating, displayed on page 2. Part numbers for effected standard switches and indicators are shown on page 3.

**CHANGES TO SPECIFICATIONS FOR SUPER BRIGHT BLUE LED**

The electrical specifications shown are determined at a basic temperature of 25°C. Polarity marks are on bottom of switch. The LED is an integral part of the switch and not available separately.		Super Bright LEDs are Electrostatic Sensitive		
		Before Change <b>6G</b>	After Change <b>6G</b>	
Maximum Forward Current	$I_{FM}$	30mA	30mA	
Typical Forward Current	$I_F$	20mA	20mA	
Forward Voltage	$V_F$	3.6V	<b>2.9V</b>	
Maximum Reverse Voltage	$V_{RM}$	5V	5V	
Current Reduction Rate Above 25°C	$\Delta I_F$	0.50mA/°C	<b>0.33mA/°C</b>	
Ambient Temperature Range		-25°C ~ +50°C	-25°C ~ +50°C	

**Notes**

- The LED circuit is isolated and requires an external power source.
- For best results and safe use of the LEDs, the supply voltage should be more than the LED forward voltage. In addition, an appropriately valued ballast resistor should be used. Without the ballast resistor, the LED will be damaged or destroyed. The resistor value can be calculated by using the formula shown here.
- Contact information is below if more details are needed.



$$R = \frac{E - V_F}{I_F}$$

Where: R = Resistor Value (Ohms)  
 E = Source Voltage (V)  
 $V_F$  = Forward Voltage (V)  
 $I_F$  = Forward Current (A)

**Effective Date**

Changes for UB2 Series Illuminated Pushbuttons and Indicators with Super Bright Blue LEDs are effective November 2022.



www.nkkswitches.com • 1.877.2BUYNKK (228.9655)  
 7850 East Gelding Drive • Scottsdale, AZ 85260 • Telephone 480.991.0942 • Fax 480.998.1435

# Change Notice

# UB2 Series

## Changes for Super Bright Blue LEDs in UB2 Series Pushbuttons & Indicators

CHANGES TO TERMINALS & TERMINAL PLATING		
Model	Before Change	After Change
<p><b>Snap-in Mount with Solder Lug Terminals</b></p> <p>Code <b>01</b></p>		
<p><b>PC Mount with Straight PC Terminals</b></p> <p>Code <b>03</b></p>		
<b>Terminal Plating</b>	Tin	Silver

**Notes** Illustrations represent UB2 double pole illuminated pushbuttons. Single poles switches do not have terminals 4, 5 and 6. UB2 indicators do not have terminals 1 through 6. Dimensions are in metric/inch.



www.nkkswitches.com • 1.877.2BUYNKK (228.9655)  
 7850 East Gelding Drive • Scottsdale, AZ 85260 • Telephone 480.991.0942 • Fax 480.998.1435

# Change Notice

# UB2 Series

## Changes for Super Bright Blue LEDs in UB2 Series Pushbuttons & Indicators

EFFECTED STANDARD PART NUMBERS FOR SWITCHES		
UB215KKG016G	UB216KKW016G-2B	UB225SKG036G-3JB
UB215KKG016G-1JB	UB216KKW016G-3JB	UB225SKW036G
UB215KKG016G-2B	UB216SKG036G	UB225SKW036G-1JB
UB215KKG016G-3JB	UB216SKG036G-1JB	UB225SKW036G-2B
UB215KKW016G	UB216SKG036G-2B	UB225SKW036G-3JB
UB215KKW016G-1JB	UB216SKG036G-3JB	UB226KKG016G
UB215KKW016G-2B	UB216SKW036G	UB226KKG016G-1JB
UB215KKW016G-3JB	UB216SKW036G-1JB	UB226KKG016G-2B
UB215SKG036G	UB216SKW036G-2B	UB226KKG016G-3JB
UB215SKG036G-1JB	UB216SKW036G-3JB	UB226KKW016G
UB215SKG036G-2B	UB225KKG016G	UB226KKW016G-1JB
UB215SKG036G-3JB	UB225KKG016G-1JB	UB226KKW016G-2B
UB215SKW036G	UB225KKG016G-2B	UB226KKW016G-3JB
UB215SKW036G-1JB	UB225KKG016G-3JB	UB226SKG036G
UB215SKW036G-2B	UB225KKW016G	UB226SKG036G-1JB
UB215SKW036G-3JB	UB225KKW016G-1JB	UB226SKG036G-2B
UB216KKG016G	UB225KKW016G-2B	UB226SKG036G-3JB
UB216KKG016G-1JB	UB225KKW016G-3JB	UB226SKW036G
UB216KKG016G-2B	UB225SKG036G	UB226SKW036G-1JB
UB216KKG016G-3JB	UB225SKG036G-1JB	UB226SKW036G-2B
UB216KKW016G	UB225SKG036G-2B	UB226SKW036G-3JB
UB216KKW016G-1JB	—	—
EFFECTED STANDARD PART NUMBERS FOR INDICATORS		
UB201KW036G	UB201KW036G-3JB	UB204KW036G-2B
UB201KW036G-1JB	UB204KW036G	UB204KW036G-3JB
UB201KW036G-2B	UB204KW036G-1JB	—



7850 East Gelding Drive • Scottsdale, AZ 85260 • Telephone 480.991.0942 • Fax 480.998.1435

www.nkkswitches.com • 1.877.2BUYNKK (228.9655)