

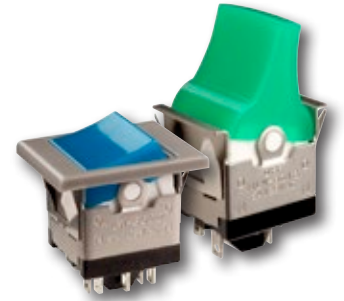
# Change Notice

# MLW Series

## Discontinuation of MLW Snap-in Miniature Rockers & Paddles & Related Accessories

Type of Change:

- Engineering     Part Number  
 Product         Appearance



**MLW Series Rockers & Paddles will be Discontinued**

1. NKK Switches will be discontinuing MLW Snap-in Miniature Rockers and Paddles and all related accessories for both standard and custom switches. There are no direct alternates for the discontinued switches. Part numbers for effected standard switches and accessories follow on the table below.

Effected Standard Part Numbers for MLW Rockers & Paddles								
Switches	Accessories: Rocker & Paddle Caps, Lamps & Bezels							
MLW3012	AT204A	AT405F	AT438G	AT4127SC				
MLW3013	AT204B	AT405G	AT462A	AT4127SE				
MLW3015	AT204C	AT426A	AT602N	AT4127SF				
MLW3018	AT204D	AT426B	AT606C	AT9201A				
MLW3019	AT204E	AT426C	AT606F	AT9201B				
MLW3022	AT204F	AT426D	AT622C	AT9201C				
MLW3023	AT204G	AT426E	AT622E	AT9201D				
MLW3025	AT204H	AT426F	AT622F	AT9201E				
MLW3028	AT405A	AT426G	AT4125B	AT9201F				
MLW3029	AT405B	AT438B	AT4125C	AT9201G				
MLW3020	AT405C	AT438C	AT4125E	AT9201H				
---	AT405D	AT438D	AT4125F	---				
---	AT405E	AT438F	AT4127SB	---				
<b>Color Codes</b>	<b>A</b> Black	<b>B</b> White	<b>C</b> Red	<b>D</b> Orange	<b>E</b> Yellow	<b>F</b> Green	<b>G</b> Blue	<b>H</b> Gray

### Notes

Alternate options are not available for the discontinued switches or accessories. Contact information is below if more details are needed.

### Effective Dates for Change No. 1

Orders for MLW Series Rockers and Paddles and related accessories will be accepted through July 20, 2023. The end of sales date is January 25, 2024.

**NKK**  
SWITCHES

www.nkkswitches.com • 1.877.2BUYNKK (228.9655)  
7850 East Gelding Drive • Scottsdale, AZ 85260 • Telephone 480.991.0942 • Fax 480.998.1435

# Change Notice EB, M, MB24 & MB25 Series

## Discontinuation of AT208 Bezel & AT070 LED

Type of Change:

- Engineering     Part Number
- Product         Appearance

2. NKK Switches will be discontinuing the AT208 Bezel and the AT070 LED in all colors for both standard and custom switches. These two accessories have been used in M Series Rockers, and EB, MB2400 and MB2500 Series Pushbuttons, all snap-in mount models. There are no direct alternates for the discontinued products. Part numbers for effected standard accessories are on the following table.



AT070 LED & AT208 Bezel will be Discontinued

Effected Standard Part Numbers for M Rockers & EB, MB24 & MB25 Pushbuttons		
AT208 Bezel	AT070 LED	
AT208A (Black)	AT070C (Red)	AT070F (Green)

**Notes**  
 Alternate options are not available for the discontinued accessories.  
 Contact information is below if more details are needed.

### Effective Dates for Change No. 2

Orders for the AT208 Bezel and the AT070 LED will be accepted through July 20, 2023. The end of sales date is January 25, 2024.



www.nkkswitches.com • 1.877.2BUYNKK (228.9655)  
 7850 East Gelding Drive • Scottsdale, AZ 85260 • Telephone 480.991.0942 • Fax 480.998.1435