

Change Notice

UB2 Series

Changes for Super Bright Red/Green Bicolor LEDs in UB2 Series Pushbuttons & Indicators

Type of Change:

- Engineering Part Number
 Product Appearance

The original Change Notice CN-0426 released September 2025 is being reissued as Change Notice CN-0426-A with changes. The revisions are the Forward Voltage of the red/green bicolor LED (on table below) and the Effective date.



UB2 Series with Super Bright Red/Green LEDs will Undergo Changes

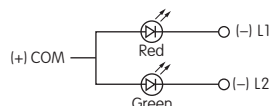
The Super Bright Red and Green Bicolor LEDs for UB2 Series pushbutton switches and indicators will be changing. Both standard and custom pushbuttons and indicators are included in the revision. The change will effect electrical specifications, which are compared below. Part numbers for effected standard switches and indicators are shown on page 2.

CHANGES TO SPECIFICATIONS FOR SUPER BRIGHT BICOLOR LEDs

The electrical specifications shown are determined at a basic temperature of 25°C. Polarity marks are on bottom of switch. The LED is an integral part of the switch and not available separately.		Super Bright LEDs are Electrostatic Sensitive			
		6CF Before Change		6CF After Change	
	Color	Red	Green	Red	Green
Maximum Forward Current	I_{FM}	30mA 25mA for Amber	25mA 22mA for Amber	* 30mA	
Typical Forward Current	I_F	20mA	20mA	20mA	20mA
Forward Voltage	V_F	2.1V	3.5V	2.9V 2.2V	3.2V
Maximum Reverse Voltage	V_{RM}	4V	4V	4V	4V
Current Reduction Rate Above 25°C	ΔI_F	0.40mA/°C	0.33mA/°C	0.33mA/°C	0.33mA/°C
Ambient Temperature Range		-20°C ~ +50°C		-25°C ~ +50°C	



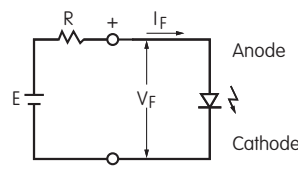
Super Bright Bicolor LED with 2 Elements



* This number is the Forward Current Value when either color is illuminated (single color illumination). When illuminating both colors, apply the value as the Total Current Value of Red and Green.

Notes

- The LED circuit is isolated and requires an external power source.
- For best results and safe use of the LEDs, the supply voltage should be more than the LED forward voltage. In addition, an appropriately valued ballast resistor should be used. Without the ballast resistor, the LED will be damaged or destroyed. The resistor value can be calculated by using the formula shown here.
- Contact information is below if more details are needed.



$$R = \frac{E - V_F}{I_F}$$

Where: R = Resistor Value (Ohms)
E = Source Voltage (V)
 V_F = Forward Voltage (V)
 I_F = Forward Current (A)

Effective Date

Changes for UB2 Series Pushbuttons & Indicators with Super Bright Red/Green Bicolor LEDs will be effective April 2026. Changes for UB2 Series Pushbuttons & Indicators with Super Bright Red/Green Bicolor LEDs will be effective August 2026. However, the date may be subject to change depending on inventory of the products.

NKK
SWITCHES

www.nkkswitches.com • 1.877.2BUYNKK (228.9655)

7850 East Gelding Drive • Scottsdale, AZ 85260 • Telephone 480.991.0942 • Fax 480.998.1435

Change Notice

UB2 Series

Changes for Super Bright Red/Green Bicolor LED in UB2 Series Pushbuttons & Indicators

* EFFECTED STANDARD PART NUMBERS WITH RED/GREEN BICOLOR LED - PUSHBUTTONS

UB215SKW036CF	UB215SKG036CF	UB215KKW016CF	UB215KKG016CF
UB215SKW036CF-1JB	UB215SKG036CF-1JB	UB215KKW016CF-1JB	UB215KKG016CF-1JB
UB215SKW036CF-2B	UB215SKG036CF-2B	UB215KKW016CF-2B	UB215KKG016CF-2B
UB215SKW036CF-3JB	UB215SKG036CF-3JB	UB215KKW016CF-3JB	UB215KKG016CF-3JB
UB216SKW036CF	UB216SKG036CF	UB216KKW016CF	UB216KKG016CF
UB216SKW036CF-1JB	UB216SKG036CF-1JB	UB216KKW016CF-1JB	UB216KKG016CF-1JB
UB216SKW036CF-2B	UB216SKG036CF-2B	UB216KKW016CF-2B	UB216KKG016CF-2B
UB216SKW036CF-3JB	UB216SKG036CF-3JB	UB216KKW016CF-3JB	UB216KKG016CF-3JB
UB225SKW036CF	UB225SKG036CF	UB225KKW016CF	UB225KKG016CF
UB225SKW036CF-1JB	UB225SKG036CF-1JB	UB225KKW016CF-1JB	UB225KKG016CF-1JB
UB225SKW036CF-2B	UB225SKG036CF-2B	UB225KKW016CF-2B	UB225KKG016CF-2B
UB225SKW036CF-3JB	UB225SKG036CF-3JB	UB225KKW016CF-3JB	UB225KKG016CF-3JB
UB226SKW036CF	UB226SKG036CF	UB226KKW016CF	UB226KKG016CF
UB226SKW036CF-1JB	UB226SKG036CF-1JB	UB226KKW016CF-1JB	UB226KKG016CF-1JB
UB226SKW036CF-2B	UB226SKG036CF-2B	UB226KKW016CF-2B	UB226KKG016CF-2B
UB226SKW036CF-3JB	UB226SKG036CF-3JB	UB226KKW016CF-3JB	UB226KKG016CF-3JB

* Includes all Part Numbers with suffix “/U” or “/CUL”.

* EFFECTED STANDARD PART NUMBERS WITH RED/GREEN BICOLOR LED & ALTERNATING LEGENDS - PUSHBUTTONS

UB215SKW036CF-4JCFXX	UB216SKG036CF-4JCFXX	UB216KKW016CF-4JCFXX	UB216KKG016CF-4JCFXX
UB225SKW036CF-4JCFXX	UB225SKG036CF-4JCFXX	UB225KKW016CF-4JCFXX	UB225KKG016CF-4JCFXX
UB226SKW036CF-4JCFXX	UB226SKG036CF-4JCFXX	UB226KKW016CF-4JCFXX	UB226KKG016CF-4JCFXX
UB215SKG036CF-4JCFXX	UB215KKW016CF-4JCFXX	UB215KKG016CF-4JCFXX	---

* Includes all Part Numbers with suffix “/U” or “/CUL”.

“XX” in Part Numbers above represents codes 11, 12, 13 or 14, which designates an Alternating Legend.

EFFECTED STANDARD PART NUMBERS WITH RED/GREEN BICOLOR LED - INDICATORS

UB201KW036CF	UB201KW036CF-2B	UB204KW036CF	UB204KW036CF-2B
UB201KW036CF-1JB	UB201KW036CF-3JB	UB204KW036CF-1JB	UB204KW036CF-3JB



www.nkkswitches.com • 1.877.2BUYNKK (228.9655)

7850 East Gelding Drive • Scottsdale, AZ 85260 • Telephone 480.991.0942 • Fax 480.998.1435