

# Change Notice

# SK, MRB & MR Series

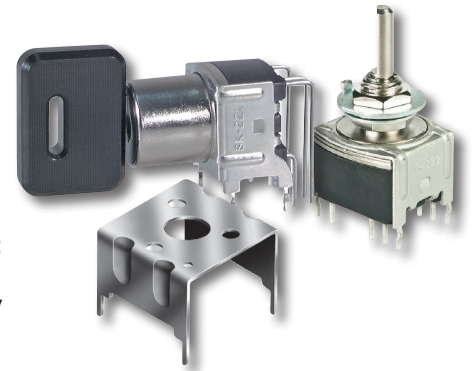
## Changes to Material of Brackets for SK, MRB and MR Series

Type of Change:

- Engineering     Part Number  
 Product         Appearance

There will be changes for the material of brackets, or mounting plates, for the following: SK Series Process Sealed Keylocks and MRB Series PCB Process Sealed Rotaries. Additionally, a support bracket from MR Series Half-Inch Diameter Rotaries, specifically for the MRK model, will undergo the same revision. This change will apply to standard and custom models in each series. The previous material, steel, will be changing to phosphor bronze. Details are highlighted on the following table.

The effected standard part numbers are displayed below and on page 2.



**Bracket Material will be Changing for SK, MRB, and MR Series**

| Bracket  | Before Change | After Change    |
|----------|---------------|-----------------|
| Material | Steel         | Phosphor Bronze |
| Finish   | Semi-matte    | Matte           |

### Notes

This change does not impact the specifications or dimensions of the brackets. Contact information is below if more details are needed.

#### Effected Standard Part Numbers for SK Series Process Sealed Keylocks

|          |          |          |          |          |                       |
|----------|----------|----------|----------|----------|-----------------------|
| SK12AG13 | SK12BG13 | SK14DG13 | SK14EG13 | * ——     | SK14DG30/214 (Custom) |
| SK12AG30 | SK12BG30 | SK14DG30 | SK14EG30 | SK15BG30 | SK14DG30/209 (Custom) |
| SK22AG13 | SK22BG13 | SK24DG13 | SK24EG13 | SK25BG13 | SK14DG13/214 (Custom) |
| SK22AG30 | SK22BG30 | * ——     | * ——     | SK25BG30 | SK12AG30/119 (Custom) |

#### Effected Standard Part Number for MR Series Half-Inch Diameter Process Sealed Rotaries

|                         |                 |
|-------------------------|-----------------|
| Support Bracket for MRK | Accessory AT543 |
|-------------------------|-----------------|

\* SK15BG13, SK24DG30 and SK24EG30 are not included in the change at this time, but will undergo the same revision in the near future under a separate Product Change Notice.

### Effective Date

Changes to material of the brackets will be effective October 2026. However, the date may be subject to change depending on inventory of the products.

**NKK**  
SWITCHES

www.nkkswitches.com • 1.877.2BUYNKK (228.9655)  
7850 East Gelding Drive • Scottsdale, AZ 85260 • Telephone 480.991.0942 • Fax 480.998.1435

# Change Notice

# SK, MRB & MR Series

## Changes to Material of Brackets for SK, MRB and MR Series

**\*\* Effected Standard Part Numbers for MRB Series Process Sealed Rotaries**

|                 |                 |                 |                 |                 |
|-----------------|-----------------|-----------------|-----------------|-----------------|
| MRB12B          | MRB12B-BC       | MRB12H-BE-AT535 | MRB22B-A        | MRB24B-CG-AT535 |
| MRB14B          | MRB12B-BC-AT535 | MRB14B-A        | MRB22B-A-AT535  | MRB24B-CH       |
| MRB22B          | MRB12B-CA       | MRB14B-A-AT535  | MRB22B-AT535    | MRB24B-CH-AT535 |
| MRB24B          | MRB12B-CA-AT535 | MRB14B-AT535    | MRB22B-CB       | MRB24H-A        |
| MRB12H          | MRB12B-CB       | MRB14B-BA       | MRB22B-CB-AT535 | MRB24H-A-AT535  |
| MRB14H          | MRB12B-CB-AT535 | MRB14B-BA-AT535 | MRB24B-A        | MRB24H-AT535    |
| * —             | MRB12B-CC       | MRB14B-BH       | MRB24B-A-AT535  | MRB24H-BA       |
| MRB24H          | MRB12H-A        | MRB14B-BH-AT535 | MRB24B-AT535    | MRB24H-BA-AT535 |
| MRB12B-A        | MRB12H-A-AT535  | MRB14B-CA       | MRB24B-BC       | MRB24H-BB       |
| MRB12B-A-AT535  | MRB12H-AT535    | MRB14B-CA-AT535 | MRB24B-BC-AT535 | MRB24H-BB-AT535 |
| MRB12B-AT535    | MRB12H-BA       | MRB14H-A        | MRB24B-CA       | MRB24H-BC       |
| MRB12B-BA       | MRB12H-BA-AT535 | MRB14H-A-AT535  | MRB24B-CA-AT535 | MRB24H-BC-AT535 |
| MRB12B-BA-AT535 | MRB12H-BC       | MRB14H-AT535    | MRB24B-CB       | MRB24H-CA       |
| MRB12B-BB       | MRB12H-BC-AT535 | MRB14H-BH       | MRB24B-CB-AT535 | MRB24H-CA-AT535 |
| MRB12B-BB-AT535 | MRB12H-BE       | MRB14H-BH-AT535 | MRB24B-CG       |                 |

\* MRB22H is not included in the change at this time, but will undergo the same revision in the near future under a separate Product Change Notice.

\*\* Includes any Part Number with a suffix for any knob option and/or color.

**Note**

Part numbers are based on NKK Switches' past eight years of inventory activity.



7850 East Gelding Drive • Scottsdale, AZ 85260 • Telephone 480.991.0942 • Fax 480.998.1435

www.nkkswitches.com • 1.877.2BUYNKK (228.9655)