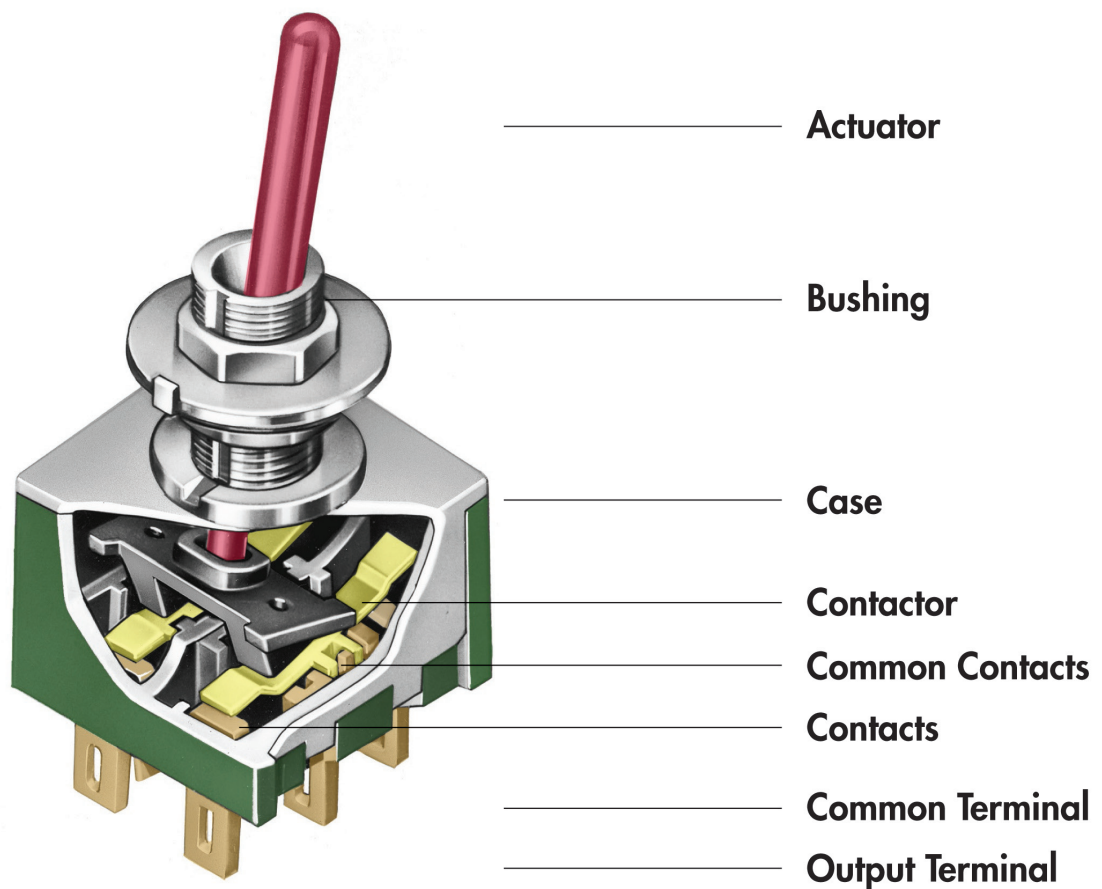


Switches 101: Basic Training

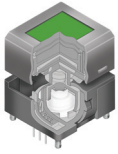


All Rights Reserved Worldwide

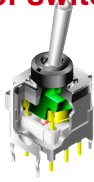
NKK Switches makes no warranty for the use of these products and assumes no responsibility for any errors, which may appear in this document, nor does it make a commitment to update the information contained herein.
SmartDisplay is trademark of NKK Switches.

7 Questions to Specify a Switch

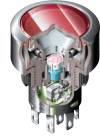
1. What type of switch (actuator)



Programmable



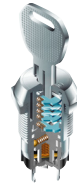
Toggle



Pushbutton



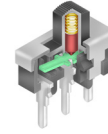
Rocker



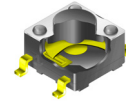
Keylock



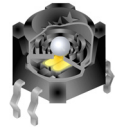
Rotary



Slide



Tactile



Tilt

2. What are the electrical requirement

- Voltage
- Current (6A @ 125V AC)
- Logic Level
- Number of Poles/Throws
- Illumination
- Power Circuit
- Loads:
 - Resistive
 - Inductive
 - Motor

3. What size switch

- Ultra-Miniature
- Sub-miniature
- Miniature
- Standard

4. What type of termination

- Solder Lug (wire harness)
- Screw Terminals
- PCB
- SMT
- Quick Connect

5. How is switch mounted into device

- Panel Bushing Mount (threads)
- Snap-In Panel Mount
- PCB Mount
- SMT

6. What is the industry? For example

- Broadcast
- Audio
- Automation
- Medical
- Telecom
- Security
- Computer

7. Are there any unique requirements? For example:

- Sealed
- IP Ratings
- Illuminated
- Standards
- Approvals
- Value-Added Services
 - Custom Printing
 - Legends
 - Wire Assembly

TOGGLES

Maximum Rating	Size	MOUNTING				TERMINALS							Series
		PC Board	Bushing	Snap-In	Two Screw	Solder Lug	PC	Quick Connect	Wire Wrap	Screw	SMT Gull Wing	Process Seal	
0.4VA @ 28V AC/DC	ultra-mini	•					•					•	G
0.4VA @ 28V AC/DC	ultra-mini	•					•					•	G Illum
0.4VA @ 28V AC/DC	ultra-mini										•	•	G3T
0.4VA @ 28V AC/DC	submini	•					•					•	A
0.4VA @ 28V AC/DC	submini	•					•					•	B
0.4VA @ 28V AC/DC	submini	•					•					•	B Illum
0.4VA @ 28V AC/DC	miniature	•	•			•	•	•	•				M
0.4VA @ 28V AC/DC	miniature	•					•					•	M2T
0.4VA @ 28V AC/DC	miniature	•	•			•	•	•					M2100
0.4VA @ 28V AC/DC	miniature		•			•							TL
6A @ 125V AC	miniature	•	•			•	•	•	•				M
6A @ 125V AC	miniature	•					•					•	M2T
6A @ 125V AC	miniature	•	•			•	•	•					M2100
6A @ 125V AC	miniature		•			•							TL
10A @ 125V AC	standard	•	•			•	•	•					P
10A @ 125V AC	standard		•			•			wire lead	•			WT
5A @ 125 V AC	standard		•			•							S Low Cap
15-20A @ 125V AC	standard		•			•		•					S Med Cap
15-25A @ 125V AC	standard		•			•		•		•			S Med/Hi
30-50A @ 125V AC	standard		•							•			S Hi Cap
30A @ 125V AC/DC	standard		•							•			S AC/DC

ROCKERS

Maximum Rating	Size	MOUNTING				TERMINALS						Series
		PC Board	Bushing	Snap-In	Two Screw	Solder Lug	PC	Quick Connect	Wire Wrap	Screw	Process Seal	
0.4VA @ 28V AC/DC	ultra-mini	•					•				•	G
0.4VA @ 28V AC/DC	ultra-mini	•					•					GW
0.4VA @ 28V AC/DC	ultra-mini	•					•					GW Illum
0.4VA @ 28V AC/DC	submini	•					•				•	A
0.4VA @ 28V AC/DC	miniature	•		•	•	•	•	•	•			M
0.4VA @ 28V AC/DC	miniature	•					•				•	M2T
0.4VA @ 28V AC/DC	miniature	•		•	•	•	•	•				M2100
3A @ 250V AC	miniature			•		•						CWT
5A @ 125V AC	miniature			•		•						MLW
6A @ 125V AC	miniature			•		•						CWT
6A @ 125V AC	miniature	•		•	•	•	•	•	•			M
6A @ 125V AC	miniature	•					•				•	M2T
6A @ 125V AC	miniature	•		•	•	•	•	•				M2100
6A @ 125/250V AC	miniature			•		•		•				JWS
6A @ 250V AC	miniature	•		•		•	•	•				CWS
9A @ 125V AC	miniature			•		•		•				CWSB Illum
9A @ 125V AC	miniature			•		•		•				CWSC Illum
10A @ 125V AC	standard				•	•	•	•				P
10A @ 125V AC	standard			•		•						LW
10A @ 125/250V AC	miniature			•		•		•				JWS
10A @ 125/250V AC	standard			•		•		•				JWM
15A @ 125/250V AC	standard			•		•		•	wire lead	•		WR
16A @ 125/250V AC	standard			•		•		•				JWL
20A @ 110V AC	standard				•	•						LW
15-20A @ 125V AC	standard				•	•						SW Med
30A @ 125V AC/DC	standard				•					•		SW Hi Cap

PUSHBUTTONS

		MOUNTING					TERMINALS								
Maximum Rating	Size	PC Board	Bushing	Snap-In	Two Screw	Solder Lug	PC	Quick Connect	Wire Wrap	Screw	SMT Gull Wing	Process Seal	Series		
0.4VA @ 28V AC/DC	ultra-mini	•					•					•	GB		
0.4VA @ 28V AC/DC	ultra-mini	•					•						GB2		
0.4VA @ 28V AC/DC	ultra-mini											•	G3B		
0.4VA @ 28V AC/DC	submini	•					•					•	AB		
0.4VA @ 28V AC/DC	submini	•					•					•	BB		
0.4VA @ 28V AC/DC	miniature	•	•	•		•	•						EB		
0.4VA @ 28V AC/DC	submini		•				turret						FB		
0.4VA @ 28V AC/DC	miniature	•					•					•	M2B		
0.4VA @ 28V AC/DC	miniature	•	•	•		•	•	•	•				MB2000		
0.4VA @ 28V AC/DC	miniature	•	•	•		•	•		•				MB2400		
0.4VA @ 28V AC/DC	miniature		•			•							SB4011		
500mA @ 125V AC	submini		•				turret						FB		
1A @ 125V AC	miniature	•					•					•	M2B		
3A @ 125V AC	miniature	•	•	•		•	•						EB		
3A @ 125V AC	miniature	•	•	•		•	•		•				MB2400		
3A @ 125V AC	miniature		•			•							SB4011		
6A @ 125V AC	miniature	•	•	•		•	•	•	•				MB2000		
6A @ 125V AC	standard		•			•			wire lead	•			WB		
10A @ 125/250V AC	standard			•		•		•					JPM		
15A @ 125V AC	standard		•			•				•			SB		
15A @ 125V AC	standard		•					•					SCB		
16A @ 125/250V AC	standard			•		•		•					JPL		

ILLUMINATED PUSHBUTTONS

Maximum Rating	Size	MOUNTING				TERMINALS						
		PC Board	Bushing	Snap-In	Two Screw	Solder Lug	PC	Quick Connect	Wire Wrap	Screw	Process Seal	Series
0.4VA @ 28V AC/DC	ultra-mini	•					•					GB
0.4VA @ 28V AC/DC	submini	•					•					HB2
0.4VA @ 28V AC/DC	submini	•					•					NP01
0.4VA @ 28V AC/DC	miniature	•	•	•		•	•					KB
0.4VA @ 28V AC/DC	miniature	•		•		•	•					UB
0.4VA @ 28V AC/DC	miniature	•		•		•	•					UB2
0.4VA @ 28V AC/DC	miniature		•	•		•	•	•				YB
0.4VA @ 28V AC/DC	standard	•	•	•		•	•	•				LB
0.4VA @ 28V AC/DC	standard		•			•		•			•	YB2
0.1VA @ 30V AC/DC	submini		•			•						HB
100mA @ 12V DC	miniature	•					•					KP
1A @ 125/250V AC	miniature	•	•	•		•	•					KB
3A @ 125/250V AC	miniature		•	•		•	•	•				YB
3A @ 125/250V AC	miniature		•	•		•		•				LP01
3A @ 125/250V AC	standard	•	•	•		•	•	•				LB
3A @ 125/250V AC	standard		•			•		•			•	YB2
5A @ 125/250V AC	miniature	•		•		•	•					UB
5A @ 125/250V AC	miniature	•		•		•	•					UB2
5V Photo Interrupter	standard			•								FP01

KEYLOCKS

Maximum Rating	Size	Mounting	Indexing	Terminals	Positions	Process Seal	Series
0.4VA @ 28V AC/DC	submini	PC Board	45°	PC	3	•	SK
0.4VA @ 28V AC/DC	submini	PC Board	45°	PC	5	•	SK
0.4VA @ 28V AC/DC	miniature	PC Board	90°	PC	2	•	SK
0.4VA @ 28V AC/DC	miniature	PC Board	45°	PC	3	•	SK
3A @ 125V DC	miniature	Bushing	45°	Solder Lug	3		SK
3A @ 125V DC	miniature	Bushing	90°	Solder Lug	2		SK
3A @ 250V DC	standard	Bushing	90°	Solder Lug	2		CK
3A @ 250V DC	standard	Bushing	45°	Solder Lug	3		CK

TILT SWITCH

Maximum Rating	Size	MOUNTING				TERMINALS						Series
		PC Board	Bushing	Snap-In	Two Screw	Solder Lug	PC	Quick Connect	Wire Wrap	Screw	Process Seal	
0.1VA @ 12V DC	miniature	•					•					DSA
5V Photo Interrupter	submini	•					•				•	DSB

ROTARIES

		MOUNTING		INDEXING	TERMINALS					
Maximum Rating	Size	PC Board	Bushing	Step Size	Solder Lug	PC	Screw	SMT Gull Wing	Process Seal	Series
0.4VA @ 28V AC/DC	miniature	•		30°		•			•	MRF
0.4VA @ 28V AC/DC	miniature	•	•	30°		•			•	MRK
0.4VA @ 28V AC/DC	miniature	•	•	45° & 90°		•			•	MRB
0.4VA @ 28V AC/DC	miniature		•	60°		turret				MRY
100mA @ 5/50V DC	ultra-mini	•		22.5° & 36°		•			•	ND
100mA @ 5/50V DC	ultra-mini			22.5° & 36°				•	•	ND3
100mA @ 5/50V DC	submini	•	•	22.5° & 36°		•				FR01
100mA @ 5/50V DC	submini			22.5° & 36°				•		FR02
250mA @ 125V AC	miniature	•	•	30°		•			•	MRA
1A @ 30V DC	miniature		•	45°		turret				MRX
2A @ 30V DC	miniature		•	60°		turret				MRY
2A @ 125V DC	miniature		•	45°		turret				MRX
3A @ 30V DC	miniature		•	60°	•					MRT23
3A @ 125V DC	miniature		•	60°		turret				MRY
4A @ 30V DC	miniature		•	120°	•					MRT22
5A @ 125V DC	miniature		•	60°	•					MRT23
6A @ 125V DC	standard		•	45°			•			HS13
6A @ 125/250V AC	standard		•	30°			•			TS
10A @ 125V DC	miniature		•	120°	•					MRT22
12A @ 125V DC	standard		•	30°			•			HS16
30A @ 125/250V AC	standard		•	30°			•			PS

SLIDES

Maximum Rating	Size	MOUNTING				TERMINALS							Series
		PC Board	Bushing	Snap-In	Two Screw	Solder Lug	PC	Quick Connect	Wire Wrap	Screw	SMT Gull Wing	Process Seal	
0.4VA @ 28V AC/DC	ultra-mini	•					•						SS
0.4VA @ 28V AC/DC	ultra-mini										•		SS3
0.4VA @ 28V AC/DC	submini	•					•						AS
0.4VA @ 28V AC/DC	miniature	•					•						FS
0.4VA @ 28V AC/DC	miniature	•			•	•	•						MS
1.0mA @ 10mV AC/DC	ultra-mini	•					•						SM
25mA @ 24V DC	ultra-mini	•					•						JS01, JS03
25mA @ 24V DC	ultra-mini										•		JS02, JS04
0.1A @ 12V DC	ultra-mini										•		SS3
0.1A @ 30V DC	ultra-mini	•					•						SS
0.1A @ 30V DC	ultra-mini	•					•						SS Illum
0.1A @ 50V DC	ultra-mini	•					•						JS01, JS03
0.1A @ 50V DC	ultra-mini										•		JS02, JS04
500mA @ 12V DC	ultra-mini	•					•						SM
3A @ 125V AC	miniature	•					•						CS
6A @ 125V AC	miniature	•			•	•	•						MS
6A @ 125V AC	miniature	•			•	•	•						MS Illum

TACTILES

Maximum Rating	Size	MOUNTING				TERMINALS							Series
		PC Board	Bushing	Snap-In	Two Screw	Solder Lug	PC	Quick Connect	Wire Wrap	Screw	SMT Gull Wing	Process Seal	
0.4VA @ 28V AC/DC	ultra-mini	•					•						HP02
0.4VA @ 28V AC/DC	ultra-mini										•		HP03
3VA @ 28V DC	ultra-mini	•					•						HP02
3VA @ 28V DC	ultra-mini										•		HP03
50mA @ 24V DC	ultra-mini	•					•					•	CB
50mA @ 24V DC	ultra-mini										•	•	CB3
50mA @ 24V DC	submini	•					•					•	JF
50mA @ 24V DC	submini	•					•						JF Illum
50mA @ 24V DC	submini	•					•					•	JB
50mA @ 24V DC	submini	•					•					•	JB Illum
50mA @ 24V DC	submini	•					•						JL
125mA @ 24V DC	submini	•					•					•	JB
125mA @ 24V DC	submini	•					•					•	JB Illum

SMARTDISPLAY PROGRAMMABLE

Maximum Rating	Size	LCD	OLED	Resolution (Pixels)	MOUNTING		TERMINALS	Series
					PC Board	Snap-In	PC	
PUSHBUTTON								
100mA @ 12V DC	standard		•	64 x 48	•		•	IS
100mA @ 12V DC	standard	•		64 x 32	•		•	IS
100mA @ 12V DC	compact	•		64 x 32	•		•	IS
100mA @ 12V DC	standard	•		36 x 24	•	•	•	IS
100mA @ 12V DC	compact	•		36 x 24	•		•	IS
DISPLAY								
	standard		•	52 x 36				IS
	standard	•		64 x 32				IS
	standard	•		36 x 24				IS
ROCKER								
3VA maximum DC			•	96 x 64		•		IS

TOUCH SCREENS

Maximum Rating	Technology	Input Method	Standard Screen Sizes	Series
5.5V DC	5-Wire Resistive	Finger, Gloved Finger or Stylus	10.4" - 15.0"	FT
1mA @ 5V DC (resistive load)	4-Wire Resistive		5.7" - 15.0"	FT
1mA @ 5V DC (resistive load)	Digital	Finger	5.7"	FT

MEMBRANE SWITCH KEYPADS

Maximum Rating	Illumination	Number of Keys	SURFACE SHEET		Overlay	Series
			Black	Gray		
20mA @ 24V DC	Nonilluminated	4	•			FM
20mA @ 24V DC	Nonilluminated	4		•		FM
20mA @ 24V DC	Nonilluminated	16	•			FM
20mA @ 24V DC	Nonilluminated	16		•		FM
20mA @ 24V DC	Dot Illuminated with Overlay	12			Gray surface sheet with embossed white keypad and gray legends	FM
20mA @ 24V DC	Dot Illuminated with Overlay	16				FM

TOGGLES



A SERIES SUBMINIATURE

- Single and double pole
- Logic level
- 11 circuit options
- STC contact mechanism
- Process sealed



B SERIES SUBMINIATURE

- Single and double pole
- Logic level
- Antistatic
- Locking lever option
- STC contact mechanism
- Illuminated option available
- Process sealed



G SERIES ULTRA-MINIATURE

- Single and double pole
- Straight, right angle, vertical options
- STC contact mechanism
- Process sealed
- Illuminated option available



M SERIES MINIATURE

- 1-4 pole
- Antijamming actuator design
- 1/4-40, 6mm and 12mm bushing options
- Multiple actuator, cap and color choices



M2T SERIES MINIATURE

- Single and double pole
- 5 circuit options
- Antijamming actuator design
- Smooth, double flatted bushing
- Process sealed



P SERIES STANDARD

- Single and double pole
- 6mm or 12mm bushing
- Solder lug, straight PC or quick connect
- Actuator, cap and color choices
- Internationally approved



S SERIES STANDARD AND HIGH CAPACITY

- 1-4 pole
- Solder lug, screw or quick connect
- Low, medium, medium/high or high capacity
- Locking lever or panel seal options
- Inductive ratings



WT SERIES STANDARD

- Single and double pole
- 6 circuit choices
- Solder lug, screw lug or wire leads
- IP60 and IP67 of IEC60529

ROCKERS



A SERIES SUBMINIATURE

- Single and double pole
- Logic level
- Ten circuit options
- STC contact mechanism
- Process sealed



CW SERIES MINIATURE

- Single and double pole
- Molded snap-in rocker
- Solder lug, quick connect or right angle PC
- CWT: dust proof construction
- CWS: inscription options, illuminated models available



G AND GW SERIES ULTRA-MINIATURE

- Single and double pole
- G: process sealed, optional actuator colors
- GW: rocker or paddle option, illuminated models available



JW SERIES JW STANDARD; JWS MINIATURE

- Single and double pole
- JWM TV-5 rated; JWL TV-8
- Internationally approved
- Optional barrier and rocker colors



M SERIES MINIATURE

- 1-2 pole (straight mount), 1-3 pole (right angle), 1-4 pole (vertical)
- Stainless steel frame
- Snap-in mount, bracket PC or flat frame
- Solder lug, straight PC (bracket option), right or vertical PC, quick connect
- Optional caps, colors, bezels with LEDs



M2T SERIES STANDARD

- Single and double pole
- Straight, right angle or vertical PC
- Process sealed
- Optional actuators, caps and colors



P SERIES STANDARD

- Single and double pole
- Solder lug, straight PC or quick connect
- Internationally approved
- Optional actuators and colors



SW SERIES STANDARD AND HIGH CAPACITY

- Single, double and three pole
- Solder lug or screw
- Two screw mounting
- Low/medium and high capacity ratings



WR SERIES STANDARD

- Single and double pole
- Solder lug, screw lug, quick connect or wire lead
- IP60 and IP67 of IEC60529

PUSHBUTTONS



AB AND BB SERIES SUBMINIATURE

- Single and double pole
- Logic level
- STC contact mechanism
- Process sealed
- BB: antistatic



EB SERIES MINIATURE

- Single and double pole
- Power and logic level
- Solder lug or straight PC
- Bushing and snap-in mount
- Case meets UL94V-0
- Optional actuators, caps, bezels, LEDs and colors



FB AND SB4011 SERIES MINIATURE

- Single pole
- Power and logic level
- SB40 inch or metric bushings
- Rear panel bushing mount
- Optional cap colors



GB AND GB2 SERIES ULTRA-MINIATURE

- Momentary circuit
- PC terminals
- High density mounting
- Optional caps and colors
- GB: process sealed, illuminated available



JP SERIES STANDARD AND HIGH CAPACITY

- Single and double pole
- TV-5 and TV-8 ratings
- Optional actuators and cap colors
- Solder lug/quick connect terminals
- Internationally approved



MB20 SERIES MINIATURE

- Single, double and four pole
- Momentary and alternate action
- Antijamming actuator design
- Optional actuators, caps, shrouds and colors
- Splashproof option



M2B SERIES MINIATURE

- Single and double pole
- Momentary circuit
- Snap-acting contacts
- Plunger length options
- Optional caps and colors
- Process sealed



MB24 SERIES MINIATURE

- Single and double pole
- Smooth actuation
- Stainless steel frame
- Snap-in frame, caps, bezels, LEDs and colors



SB AND SCB SERIES STANDARD

- Single and double pole
- 12mm bushing
- Options for caps and shrouds
- Low/medium/high capacity
- SB: solder lug
- SCB: solder lug, screw lug or quick connect



WB SERIES STANDARD

- Single pole
- 12mm bushing
- Solder lug, screw lug or wire lead
- Optional caps and colors
- Internationally approved
- IP60 and IP67 of IEC60529

SLIDES



AS SERIES SUBMINIATURE

- Single and double pole
- Logic level
- STC contact mechanism



CS SERIES MINIATURE

- Single and double pole
- Power rated
- Antistatic
- Cover and case UL94V-0 flammability rated



FS SERIES MINIATURE

- Double pole
- Logic level
- High frequency applications
- Actuator length options
- Straight PC terminals



JS01 SERIES ULTRA-MINIATURE

- Single pole
- Through hole mounting
- Gold plated contacts
- Slide actuator
- Four or eight positions
- Stick-tube packaging



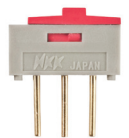
JS03 SERIES ULTRA-MINIATURE

- Single pole
- Through hole mounting
- Gold plated contacts
- Piano actuator
- Four or eight positions
- Stick-tube packaging



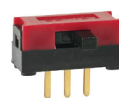
MS SERIES MINIATURE

- Single and double pole
- Panel, PCB and bracket mount options
- Solder lug, straight PC (bracket option), right angle or vertical PC
- Two actuator sizes
- Illuminated models available



SM SERIES ULTRA-MINIATURE

- Single pole
- STC contact mechanism
- High density mounting
- Through hole



SS SERIES ULTRA-MINIATURE

- Single and double pole
- Top or side actuation
- STC contact mechanism
- 3-ON and illuminated models available
- Metric or inch terminal spacing

TACTILES



CB SERIES FLAT BUTTON

- 6mm
- Nonilluminated
- Process sealed



HP02 SERIES FLAT BUTTON

- 6mm
- Nonilluminated



JB SERIES FLAT BLUE BUTTON

- 10mm
- Nonilluminated
- Process sealed



JB SERIES FRAMED CAP

- 10mm
- Extended actuator, high operating force
- Illuminated
- Process sealed



JB SERIES FLAT CAP

- 10mm
- Short actuator, std. operating force
- Illuminated
- Process sealed



JB SERIES RIGHT ANGLE FLAT BUTTON OR CAP

- 10mm
- Nonilluminated
- Process sealed



JB SERIES SCULPTURED, FRAMED OR FLAT CAPS

- 10mm
- Nonilluminated
- Process sealed



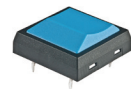
JF SERIES PIANO ACTUATOR

- 18mm
- Nonilluminated
- Process sealed



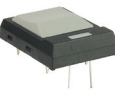
JF SERIES ROUND OR SQUARE ACTUATORS, ROUND ACTUATOR/SQUARE BODY

- 18mm
- Nonilluminated
- Process sealed



JF SERIES SCULPTURED ACTUATOR

- 18mm
- Nonilluminated
- Process sealed



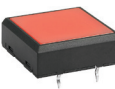
JF SERIES SQUARE, ROUND OR SCULPTURED ACTUATORS

- 18mm
- Spot illuminated
- Process sealed



JF SERIES SQUARE ACTUATOR

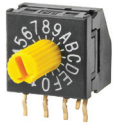
- 18mm
- Full face illuminated
- Process sealed



JL SERIES SQUARE ACTUATOR

- 22mm
- Full face illuminated

ROTARIES



FR01 SERIES SUBMINIATURE

- 10mm binary coded DIP rotary
- Screwdriver, plastic shaft, dial or metal shaft actuation
- Straight or right angle PC
- Decimal or hexadecimal positions
- Stick-tube packaging



MR SERIES MINIATURE - PROCESS SEALED

- Single, double and four pole
- Self-cleaning contact mechanism
- MRF: low profile
- MFA and MRK: metal bushing and housing
- MRK: IP67 of IEC60529



MR SERIES MINIATURE - POWER LEVEL

- Single, double and four pole
- 2-8 position settings
- PC turret, turret or solder lug
- Plain or color tipped knobs



MRB SERIES MINIATURE

- Single or double pole
- Straight or right angle with bracket PC
- Double flatted bushing
- Self-cleaning contact mechanism
- Process sealed
- Optional knobs



ND SERIES ULTRA-MINIATURE

- 8mm binary coded DIP rotary
- Screwdriver or shaft actuated
- Decimal or hexadecimal positions
- Real or complement coded
- Straight or right angle PC
- SMT model available
- Process sealed



HS SERIES STANDARD

- 6A or 12A @ 125V AC
- 1-6 poles
- 30° or 45° indexing
- Round, D-flat or knurled shaft
- 2-11 position settings



PS SERIES STANDARD - HIGH CAPACITY

- 30A @ 125/250V AC
- 1-5 poles
- 30° indexing
- Knurled or D-flat shaft
- 2-11 position settings



TS SERIES STANDARD

- 6A @ 125/250V AC
- 1-5 poles
- 30° indexing
- D-flat shaft
- 2-11 position settings

KEYLOCKS



CKM SERIES FLAT KEY

- High security
- 16mm threaded bushing
- Insulated key and switch housing
- Epoxy sealed solder lug terminals
- 2 or 3 lock positions
- Single pole
- Antistatic



CKM SERIES TUBULAR KEY

- High security
- 16mm threaded bushing
- Insulated key and switch housing
- Epoxy sealed solder lug terminals
- 2 or 3 lock positions
- Single pole
- Antistatic



CKL SERIES FLAT KEY

- High security
- 19mm threaded bushing
- Rugged, die cast housing
- Epoxy sealed solder lug terminals
- 2 or 3 lock positions
- Single pole



CKL SERIES TUBULAR KEY

- High security
- 19mm threaded bushing
- Rugged, die cast housing
- Epoxy sealed solder lug terminals
- 2 or 3 lock positions
- Single pole



SK SERIES LOW SECURITY

- 12mm threaded bushing
- 2 or 3 lock positions
- Single pole
- Epoxy sealed solder lug terminals
- Dust resistant interior



SK SERIES MEDIUM SECURITY

- 12mm threaded bushing
- 2 or 3 lock positions
- Single pole
- Epoxy sealed solder lug terminals
- Dust resistant interior



SK SERIES SUBMINIATURE - ANTISTATIC PROCESS SEALED

- 9mm smooth bushing
- High density mounting
- Molded-in terminals
- 3 or 5 lock positions
- Single pole
- Straight or right angle PC



SK SERIES MINIATURE - PROCESS SEALED

- 12mm smooth bushing
- Insulated key
- Low security
- Logic level
- Molded-in terminals
- Disposable boot
- 2 or 3 lock positions
- Single and double pole
- Straight or right angle PC

SURFACE MOUNT DEVICES



CB3 SERIES TACTILES - PROCESS SEALED

- Single pole
- Dome contact
- Insert molded terminals
- Common bus and X-Y matrix
- Tape-reel and tray packaging



FR02 SERIES ROTARIES - PROCESS COMPATIBLE

- Real or complement coded
- Decimal or hexadecimal
- Screwdriver actuated
- Upright mounting
- Tape-reel and stick-tube packaging



G3T SERIES ULTRA-MINIATURE TOGGLES - PROCESS SEALED

- Single and double pole
- STC contact mechanism
- Upright (bracket option) and right angle mounting
- Molded-in, epoxy sealed terminals
- Tape-reel, stick-tube and tray packaging



G3B SERIES ULTRA-MINIATURE PUSHBUTTONS - PROCESS SEALED

- Single and double pole
- STC contact mechanism
- Momentary action
- Upright (bracket option) and right angle mounting
- Molded-in, epoxy sealed terminals
- Tape-reel, stick-tube and tray packaging



HP03 SERIES TACTILES - PROCESS COMPATIBLE

- Single pole
- Common bus and X-Y matrix
- Tape-reel and stick-tube packaging



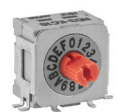
JS02 SERIES ULTRA-MINIATURE SLIDES - PROCESS COMPATIBLE

- 4 or 8 positions
- Extended actuator
- Tape-reel and stick-tube packaging



JS04 SERIES ULTRA-MINIATURE SLIDES - PROCESS COMPATIBLE

- 4 or 8 positions
- Flush actuator
- Tape-reel and stick-tube packaging



ND3 SERIES ULTRA-MINIATURE DIP ROTARIES - PROCESS SEALED

- Real or complement coded
- Decimal or hexadecimal
- Screwdriver or shaft actuated
- Upright (bracket option) and right angle mounting
- Epoxy sealed terminals
- Tape-reel and tray packaging



SS3 SERIES ULTRA-MINIATURE SLIDES - PROCESS COMPATIBLE

- Single pole, double pole and three throw
- 3-on model
- Side actuated
- Tape-reel and tray packaging

ILLUMINATED PUSHBUTTONS



FP01 SERIES MINIATURE

- LED illumination
- Photo interrupter
- Rugged construction
- Snap-in
- Connector socket available



GB SERIES ULTRA-MINIATURE

- Single pole
- Logic level
- Full face illumination
- Bicolor LEDs
- STC contact mechanism



HB SERIES SUBMINIATURE

- Single pole
- Round or square
- Front panel relamping
- LED, cap and color options



HB2 SERIES SUBMINIATURE

- Single pole
- Logic level
- Full face illumination
- Bicolor LEDs
- Compact, square body



KB SERIES MINIATURE

- Single and double pole
- Bright or super bright LEDs
- Bushing or snap-in
- Square, round or rectangular



KP SERIES MINIATURE

- Single pole
- Bicolor or RGB LEDs
- Flat, sculptured and home key caps in 3 sizes
- Tactile, nontactile, tactile/audible
- Silent actuation



LB SERIES STANDARD

- Single and double pole
- LED, neon and incandescent
- Round, square or rectangular
- Panel seal option
- Cap, protective guard, dust cover and splash cover options



LP SERIES MINIATURE

- Single and double pole
- Snap-acting
- LED color options
- Solder lug/quick connect terminals
- Bushing or snap-in



NP01 SERIES SUBMINIATURE

- Single pole
- Full-face LED illumination
- Smooth actuation
- Single or bicolor LEDs
- Standard or high operating force
- Alternating legends
- Stick-tube packaging



UB SERIES MINIATURE

- Single and double pole
- Bright or super bright LEDs
- Full face or spot illumination
- Square or rectangular, PCB or snap-in
- Solder lug or straight PC



UB2 SERIES MINIATURE

- Single and double pole
- PCB or snap-in
- Flat, beveled or sculptured caps
- Alternating legends
- Cap, protective guard, dust cover and barrier options
- Bright or super bright, LED bicolor options



YB SERIES MINIATURE

- Single and double pole
- Bushing or snap-in
- Full face or spot illumination
- Bright or super bright, LED bicolor options
- Round, square or rectangular



YB2 SERIES MINIATURE

- Single and double pole
- IP65 rated
- Bright or super bright LEDs
- Solder lug/quick connect terminals
- 22mm round or 24mm square
- Black or silver bezel
- Tamper resistant

ILLUMINATED TOGGLES, ROCKERS AND SLIDES



B SERIES SUBMINIATURE

- Single pole
- Fully illuminated clear toggle and bushing
- Single or bicolor LEDs
- Straight, right angle or vertical PC
- Isolated LED terminals



CWSB AND CWSC SERIES MINIATURE

- Single and double pole
- Power level
- Full face, neon or LED
- Snap-in
- Offset terminals



G SERIES ULTRA-MINIATURE

- Single pole
- Logic level
- Full face illumination
- Bicolor LED options
- STC contact mechanism



GW SERIES ULTRA-MINIATURE

- Single pole
- Fully illuminated paddle
- Single or bicolor LEDs
- Crisp actuation
- Straight, right angle or vertical PC
- STC contact mechanism



LW SERIES STANDARD

- Power rated
- Double pole
- Dual incandescent or neon lamps
- Cap, lamp cover, filter, bezel and color options
- Snap-in



M2100 SERIES MINIATURE

- Single and double pole
- Toggle, rocker and paddle
- Single and bicolor LEDs
- Solder lug, quick connect, straight PC (bracket option) or right angle PC
- Optional bezels and colors



MLW SERIES MINIATURE

- Single and Double pole
- Rugged stainless steel housing
- Snap-in
- Front panel relamping
- Incandescent, neon or LEDs



MS SERIES MINIATURE

- Power level
- Single pole
- LED color options
- 2-screw flange or PC mounting
- Solder lug or straight PC
- Antijamming design



SS SERIES ULTRA-MINIATURE

- Single and double pole
- Compact dimensions
- Sliding twin contact mechanism
- Top or side actuation
- LED color options
- Optional slide cap



TL SERIES MINIATURE

- Double pole
- Antistatic, fully illuminated toggle
- Short or long toggle
- Bright or super bright LEDs
- UL94V-0 flammability rated base
- Interior o-ring protects contacts

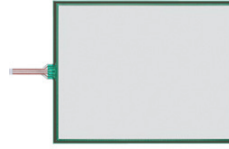
SMARTDISPLAY



PROGRAMMABLE SWITCHES OLED AND LCD

- Smallest off-the-shelf devices in the industry
- Re-configure switches and panel functions instantly
- Display industry specific graphics and moving images
- Simplifies complex, multi-decision operations
- In-house design engineering support

TOUCH SCREEN



FT SERIES RESISTIVE TOUCHSCREENS

- Superior durability & flexibility
- 4 and 5 wire analog
- Digital
- Contact reliability with connector
- ANR film
- Non-glare and hard coated surface

TILT SWITCHES



DSA SERIES MINIATURE

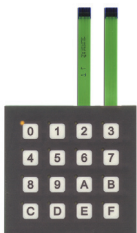
- Ball contacts
- Sealed body
- Triggered when tilted beyond +/- 10° of the horizontal
- Contains no mercury
- PC adaptor accessory option



DSB SERIES SUBMINIATURE

- Normally closed (on) status
- Photo interrupter
- Straight and right angle PC terminals
- Totally sealed construction
- Triggered when tilted beyond +/- 30° of the horizontal

MEMBRANE



FM SERIES MEMBRANE

- Easy integration
- Crisp actuation
- Adhesive backing for easy mounting
- Nonilluminated options: 4 or 16 keys
- Illuminated options: 12 or 16 keys, legends on embossed keypads