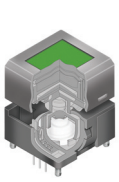
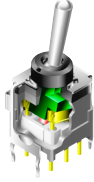


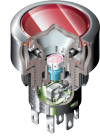
1. What type of switch (actuator)



Programmable



Toggle



Pushbutton



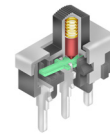
Rocker



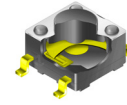
Keylock



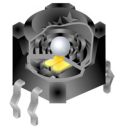
Rotary



Slide



Tactile



Tilt

2. What are the electrical requirement

- Voltage
- Current (6A @ 125V AC)
- Logic Level
- Number of Poles/Throws
- Illumination
- Power Circuit
- Loads:
 - Resistive
 - Inductive
 - Motor

3. What size switch

- Ultra-Miniature
- Sub-miniature
- Miniature
- Standard

4. What type of termination

- Solder Lug (wire harness)
- Screw Terminals
- PCB
- SMT
- Quick Connect

5. How is switch mounted into device

- Panel Bushing Mount (threads)
- Snap-In Panel Mount
- PCB Mount
- SMT

6. What is the industry? For example

- Broadcast
- Audio
- Automation
- Medical
- Telecom
- Security
- Computer

7. Are there any unique requirements? For example:

- Sealed
- IP Ratings
- Illuminated
- Standards
- Approvals
- Value-Added Services
 - Custom Printing
 - Legends
 - Wire Assembly