

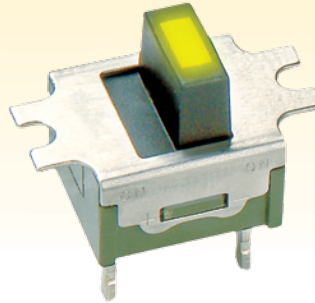
Change Notice

MS & SS Illuminated Series

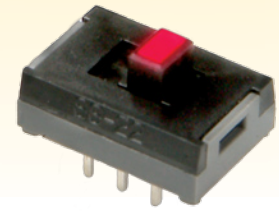
LED Specifications

Type of Change:

- Engineering Part Number
 Product Appearance




MS Illuminated Slide

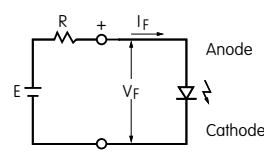


SS Illuminated Slide

The new LED specifications for MS and SS Illuminated slides supersede all previous specifications. Changes affect all models in MS LED Illuminated Series, and all SS LED Illuminated, both standard and custom switches.

LED Specifications							
Isolated Single Element 	From Current LED Specifications for MS and SS Illuminated			To New LED Specifications for MS and SS Illuminated			
	C Red	E Yellow	F Green	C Red	E Yellow	F Green	
Forward Peak Current	I_{FM}	20mA	20mA	20mA	30mA	30mA	25mA
Continuous Forward Current	I_F	16mA	16mA	16mA	16mA	16mA	16mA
Forward Voltage ($I_F = 16mA$)	V_F	2.07V	2.15V	2.16V	1.98V	2.06V	2.16V
Reverse Peak Voltage	V_{RM}	3V	4V	4V	5V	5V	5V
Current Reduction Rate Above 25°C	Δ_{IF}	0.27mA/°C			0.40mA/°C	0.42mA/°C	0.33mA/°C
Ambient Temperature Range for MS		-10°C ~ +55°C			-15°C ~ +60°C		
Ambient Temperature Range for SS		-15°C ~ +60°C			-15°C ~ +60°C		

LEDs are an integral part of the switch and not available separately. The lamp circuit is independent of switch operation. Electrical specifications are determined at a basic temperature of 25°C. If the source voltage exceeds rated voltage, a ballast resistor is required. The resistor value can be calculated by using the formula shown here.



$$R = \frac{E - V_F}{I_F}$$

Where: R = Resistor Value (Ohms)
 E = Source Voltage (V)
 V_F = Forward Voltage (V)
 I_F = Forward Current (A)

Availability

MS and SS Illuminated Series with new LED specifications are available immediately.

NKK[®]
SWITCHES

www.nkkswitches.com
 1-877-2BUYNKK
 1-877-228-9655

7850 East Gelding Drive • Scottsdale, AZ 85260
 Phone 480-991-0942 • Fax 480-998-1435