

Change Notice

YB Illuminated Series

New AT628 LEDs

Type of Change:

- Engineering Part Number
 Product Appearance

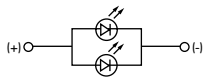


AT628 Bright LED

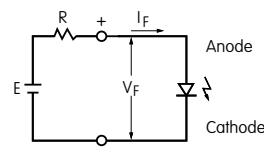


YB Illuminated Pushbuttons

The new AT628 LED specifications for YB Illuminated Series supersede all previous LED specifications. The change for the new AT628F LED affects all green models in YB Illuminated Pushbuttons, both standard and custom switches, as well as indicators.

LED Specifications							
Double Element LED  T-1 Bi-pin	From Current LED Specifications for AT628			To New LED Specifications for AT628			
	5C Red	5D Amber	5F Green	5C Red	5D Amber	5F Green	
Forward Peak Current	I_{FM}	40mA	40mA	40mA	40mA	40mA	40mA
Continuous Forward Current	I_F	26mA	26mA	26mA	26mA	26mA	26mA
Forward Voltage ($I_F = 16mA$)	V_F	1.9V	2.0V	2.2V	1.9V	2.0V	2.0V
Reverse Peak Voltage	V_{RM}	4V	4V	4V	4V	4V	4V
Current Reduction Rate Above 25°C	Δ_{IF}	0.50mA/°C			0.50mA/°C	0.50mA/°C	0.50mA/°C
Ambient Temperature Range		-25°C ~ +50°C			-25°C ~ +50°C		

The LED circuit is independent of switch operation. Electrical specifications are determined at a basic temperature of 25°C. If the source voltage exceeds rated voltage, a ballast resistor is required. The resistor value can be calculated by using the formula shown here.



$$R = \frac{E - V_F}{I_F}$$

Where: R = Resistor Value (Ohms)
 E = Source Voltage (V)
 V_F = Forward Voltage (V)
 I_F = Forward Current (A)

Note: All three LEDs are new, despite no changes to specifications of Red and Amber LEDs.

Availability

New AT628 LEDs will be available with December 2008 production.

NKK[®]
SWITCHES

www.nkkswitches.com
1.877.2BUYNKK
228.9655

7850 East Gelding Drive • Scottsdale, AZ 85260
Telephone 480.991.0942 • Fax 480.998.1435