

# Change Notice

## KB, LB, YB & YB2 Series

### Change of Super Bright LED Specifications for AT632F (Green) used in KB, LB, YB & YB2 Pushbuttons & KB, LB & YB Indicators

Type of Change:

- Engineering     Part Number  
 Product         Appearance

All models of KB, LB, YB and YB2 Pushbuttons and KB, LB and YB Indicators with the super bright LED AT632F will have a change to the specifications. The change will effect all standard and custom products with a green LED for these series.



LB Pushbutton




YB Indicator



YB2 Pushbutton

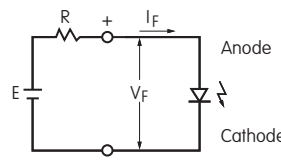
#### SUPER BRIGHT LED CODES & SPECIFICATIONS

Super Bright LEDs are Electrostatic Sensitive.		Color	Before Change	After Change
Electrical specifications are determined at a basic temperature of 25°C. The lamp circuit is isolated and requires an external power source.	Maximum Forward Current	$I_{FM}$	30mA	30mA
	Typical Forward Current	$I_F$	20mA	20mA
	Forward Voltage	$V_F$	3.5V	<b>3.3V</b>
			( $I_F = 20$ )	( $I_F = 20$ )
	Maximum Reverse Voltage	$V_{RM}$	5V	<b>7V</b>
	Current Reduction Rate Above 25°C	$\Delta I_F$	0.50mA/°C	<b>0.40mA/°C</b>
Ambient Temperature Range		-25°C ~ +50°C	-25°C ~ +50°C	

If the source voltage exceeds the rated voltage, a ballast resistor is required. The resistor value can be calculated by using the formula shown here.

#### Notes:

There are no changes to external dimensions for the LED. Contact factory if further details are needed.



$$R = \frac{E - V_F}{I_F}$$

Where: R = Resistor Value (Ohms)  
 E = Source Voltage (V)  
 $V_F$  = Forward Voltage (V)  
 $I_F$  = Forward Current (A)

#### Effective Date

Changes to LEDs will be effective with August 2014 production.

**NKK**  
SWITCHES

<http://www.nkkswitches.com> • 1.877.2BUYNKK (228.9655)

7850 East Gelding Drive • Scottsdale, AZ 85260 • Telephone 480.991.0942 • Fax 480.998.1435