

Change Notice

G Toggle, GW Paddle Series

Change of G Toggles & GW Paddles LED Specifications

Type of Change:

- Engineering Part Number
- Product Appearance

The G Series Illuminated Toggles and the GW Series Illuminated Paddles will have changes to the Red LEDs. These changes will affect the illumination of all models, both standard and custom. Differences in the LED specification values are outlined in the table below.



G Toggle



GW Paddle

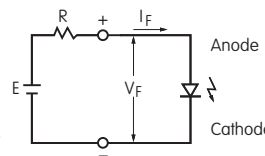
LED COLORS & SPECIFICATIONS

The electrical specifications shown are determined at a basic temperature of 25°C. Lamp circuit is independent of switch operation.

Single Color		Before Change	After Change
		Colors	C Red
Maximum Forward Current	I_{FM}	25mA	30mA
Typical Forward Current	I_F	20mA	20mA
Forward Voltage	V_F	2.0V	2.0V
Maximum Reverse Voltage	V_{RM}	4V	5V
Current Reduction Rate Above 25°C	ΔI_F	0.33mA/°C	0 – No current Reduction Rate within Ambient Temperature Range
Ambient Temperature Range		-25° ~ +55°C	-25° ~ +55°C

Notes

- LEDs are an integral part of the switch and are not available separately.
- The LED circuit is isolated and requires an external power source.
- If the source voltage exceeds the rated voltage, a ballast resistor is required. The resistor value can be calculated by using the formula shown here.
- The changes to G and GW LEDs do not affect any external dimensions of the switches.
- Contact the factory if further details are needed.



$$R = \frac{E - V_F}{I_F}$$

Where: R = Resistor Value (Ohms)
 E = Source Voltage (V)
 V_F = Forward Voltage (V)
 I_F = Forward Current (A)

Effective Date

Changes will be effective with October 2013 production.



<http://www.nkkswitches.com> • 1.877.2BUYNKK (228.9655)

7850 East Gelding Drive • Scottsdale, AZ 85260 • Telephone 480.991.0942 • Fax 480.998.1435