

Change Notice NP01 Series Illuminated Pushbuttons

Change of Single Color LED Specifications

Type of Change:

- Engineering Part Number
 Product Appearance



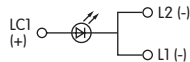
NP01 Pushbutton

The NP01 Series Illuminated Pushbuttons will have changes to the single color LEDs. The change will effect all single color models, both standard and custom. Differences in the LED specification values are outlined in the following table.

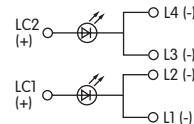
Electrical Specifications for NP01 Single Color LED							
Electrical specifications are determined at a basic temperature of 25°C.		Before Change			After Change		
Color		C	D	F	C	D	F
		Red	Amber	Green	Red	Amber	Green
Maximum Forward Current	I_{FM}	50mA	50mA	30mA	30mA	30mA	25mA
Typical Forward Current	I_F	20mA	20mA	20mA	20mA	20mA	16mA
Forward Voltage	V_F	2.0V	2.1V	3.5V	1.95V	2.0V	3.3V
Maximum Reverse Voltage	V_{RM}	5V	5V	5V	5V	5V	5V
Current Reduction Rate	ΔI_F	0.88mA/°C above 40°C	0.88mA/°C above 40°C	0.48mA/°C above 30°C	0.41mA/°C above 25°C	0.38mA/°C above 25°C	0.33mA/°C above 25°C
Ambient Temperature Range		-25° ~ +50°C			-25° ~ +50°C		



Red or Green LEDs

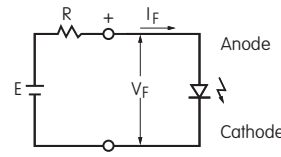


Amber LED



Notes

- LEDs are an integral part of the switch and are not available separately.
- If the source voltage exceeds the rated voltage, a ballast resistor is required. The resistor value can be calculated by using the formula shown here.
- The changes to single color LEDs do not affect any external dimensions of the switches.
- Contact the factory if further details are needed.



$$R = \frac{E - V_F}{I_F}$$

Where: R = Resistor Value (Ohms)
 E = Source Voltage (V)
 V_F = Forward Voltage (V)
 I_F = Forward Current (A)

NP01 Part Numbers Affected by Single LED Specification Changes

NP0115AG03LC-JB	NP0115AG03LD-JD	NP0115HG03LC-JB	NP0115HG03LD-JD
NP0115AG03LC-JC	NP0115AG03LF-JB	NP0115HG03LC-JC	NP0115HG03LF-JB
NP0115AG03LD-JB	NP0115AG03LF-JF	NP0115HG03LD-JB	NP0115HG03LF-JF

Effective Date

Changes to Single Color LEDs will be effective October 2015.

NKK
SWITCHES

<http://www.nkkswitches.com> • 1.877.2BUYNKK (228.9655)

7850 East Gelding Drive • Scottsdale, AZ 85260 • Telephone 480.991.0942 • Fax 480.998.1435

2015/10/21 Engineering Department