

Change Notice

KP Series

Discontinuation of RGB 8-Pin Pushbuttons, Replacement with RGBP 4-Pin Pushbuttons

Type of Change:


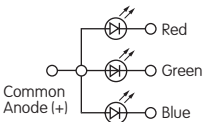
- Engineering Part Number
 Product Appearance

The KP Series 8-pin illuminated pushbuttons will be discontinued and replaced with 4-pin pushbuttons. There are variations between the LED specifications, which are highlighted below. Dimensions for the LED and the LED holder are different between the 8-pin and 4-pin, but these differences are not visible since they are inside the switch case. Differences in terminal detail and footprints are displayed on page 2. The discontinuation will effect all 8-pin models, both standard and custom, and effected standard part numbers with 4-pin replacements are on the following pages.



KP Illuminated Pushbuttons

DIFFERENCES BETWEEN LED SPECIFICATIONS

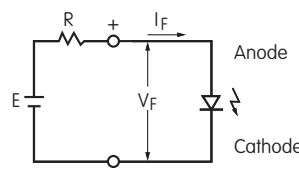
| |  | Before Change 8-Pin | | | After Change 4-Pin | | | |
|---|---|---------------------|---------------|-----------|--------------------|---------------|-----------|-------------|
| | | RGB | | | RGBP | | | |
| | | Color | Red | Green | Blue | Red | Green | Blue |
|  | Maximum Forward Current | I_{FM} | 30mA | 30mA | 30mA | 50mA | 30mA | 30mA |
| | Typical Forward Current | I_F | 20mA | 14mA | 9mA | 15mA | 16mA | 10mA |
| LED is colored in OFF state | * Forward Voltage | V_F | 2.0V | 2.9V | 2.9V | 2.0V | 2.9V | 2.9V |
| LEDs are an integral part of the switch and are not available separately | Power Peak Dissipation | P_D | 60mW | 80mW | 80mW | 100mW | 80mW | 80mW |
| | Maximum Reverse Voltage | V_{RM} | 5V | 5V | 5V | 5V | 5V | 5V |
| For applications that require white illumination, contact the factory | Dominant Wavelength | λ_d | 621.5nm | 522.5nm | 472.5nm | 620nm | 525nm | 467nm |
| | Current Reduction Rate Above 25°C | ΔI_F | 0.50mA/°C | 0.50mA/°C | 0.50mA/°C | 0.75mA/°C | 0.25mA/°C | **0.22mA/°C |
| | Ambient Temperature Range | | -25°C ~ +50°C | | | -25°C ~ +50°C | | |

* Forward Voltage (V_F) and Dominant Wavelength (λ_d) are Typical Value measured by Typical Forward Current (I_F).

**Current Reduction Rate (ΔI_F) Above 40°C

Notes

- The LED circuit is isolated and requires an external power source.
- For best results and safe use of the LEDs, the supply voltage should be more than the LED forward voltage. In addition, an appropriately valued ballast resistor should be used. Without the ballast resistor, the LED will be damaged or destroyed. The resistor value can be calculated by using the formula shown here.
- Contact information is below if more details are needed.



$$R = \frac{E - V_F}{I_F}$$

Where: R = Resistor Value (Ohms)
 E = Source Voltage (V)
 V_F = Forward Voltage (V)
 I_F = Forward Current (A)

Effective Date

Discontinuation of KP Series 8-pin models will be effective September 30, 2021. Replacement 4-pin models are currently available.

NKK
SWITCHES

www.nkkswitches.com • 1.877.2BUYNKK (228.9655)

7850 East Gelding Drive • Scottsdale, AZ 85260 • Telephone 480.991.0942 • Fax 480.998.1435

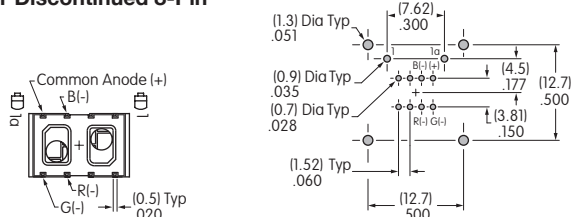
Change Notice

KP Series

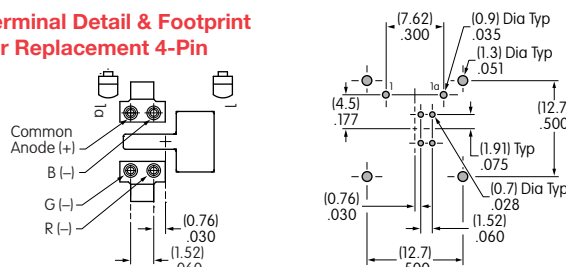
Discontinuation of RGB 8-Pin Pushbuttons, Replacement with RGBP 4-Pin Pushbuttons

DIFFERENCES BETWEEN TERMINALS

Terminal Detail & Footprint for Discontinued 8-Pin



Terminal Detail & Footprint for Replacement 4-Pin



Effected Standard & Replacement Part Numbers for KP01

| Discontinued 8-Pin Models | Replacement 4-Pin Models |
|---------------------------|--------------------------|
| KP0115ACAKG03RGB | KP0115ACAKG03RGBP |
| KP0115ACAKG03RGB-1FJB | KP0115ACAKG03RGBP-1FJB |
| KP0115ACAKG03RGB-1SJB | KP0115ACAKG03RGBP-1SJB |
| KP0115ACAKG03RGB-1TJB | KP0115ACAKG03RGBP-1TJB |
| KP0115ACBKG03RGB | KP0115ACBKG03RGBP |
| KP0115ACBKG03RGB-2FJB | KP0115ACBKG03RGBP-2FJB |
| KP0115ACBKG03RGB-2SJB | KP0115ACBKG03RGBP-2SJB |
| KP0115ACBKG03RGB-2TJB | KP0115ACBKG03RGBP-2TJB |
| KP0115ACBKG03RGB-3FJB | KP0115ACBKG03RGBP-3FJB |
| KP0115ACBKG03RGB-3SJB | KP0115ACBKG03RGBP-3SJB |
| KP0115ACBKG03RGB-3TJB | KP0115ACBKG03RGBP-3TJB |
| KP0115ACBKG03RGBJB | Contact NKK Switches |
| KP0115ANAKG03RGB | KP0115ANAKG03RGBP |
| KP0115ANAKG03RGB-1FJB | KP0115ANAKG03RGBP-1FJB |
| KP0115ANAKG03RGB-1SJB | KP0115ANAKG03RGBP-1SJB |
| KP0115ANAKG03RGB-1TJB | KP0115ANAKG03RGBP-1TJB |
| KP0115ANBKG03RGB | KP0115ANBKG03RGBP |
| KP0115ANBKG03RGB-2FJB | KP0115ANBKG03RGBP-2FJB |
| KP0115ANBKG03RGB-2JB | Contact NKK Switches |
| KP0115ANBKG03RGB-2SJB | KP0115ANBKG03RGBP-2SJB |
| KP0115ANBKG03RGB-2TJB | KP0115ANBKG03RGBP-2TJB |
| KP0115ANBKG03RGB-3FJB | KP0115ANBKG03RGBP-3FJB |
| KP0115ANBKG03RGB-3JB | Contact NKK Switches |
| KP0115ANBKG03RGB-3SJB | KP0115ANBKG03RGBP-3SJB |
| KP0115ANBKG03RGB-3TJB | KP0115ANBKG03RGBP-3TJB |



www.nkkswitches.com • 1.877.2BUYNKK (228.9655)

7850 East Gelding Drive • Scottsdale, AZ 85260 • Telephone 480.991.0942 • Fax 480.998.1435

Change Notice

KP Series

Discontinuation of RGB 8-Pin Pushbuttons, Replacement with RGBP 4-Pin Pushbuttons

| Effected Standard & Replacement Part Numbers for KP02 | |
|---|--------------------------|
| Discontinued 8-Pin Models | Replacement 4-Pin Models |
| KP0215ACAKG03RGB | KP0215ACAKG03RGBP |
| KP0215ACAKG03RGB-1FJB | KP0215ACAKG03RGBP-1FJB |
| KP0215ACAKG03RGB-1SJB | KP0215ACAKG03RGBP-1SJB |
| KP0215ACAKG03RGB-1TJB | KP0215ACAKG03RGBP-1TJB |
| KP0215ACBKG03RGB | KP0215ACBKG03RGBP |
| KP0215ACBKG03RGB-2FJB | KP0215ACBKG03RGBP-2FJB |
| KP0215ACBKG03RGB-2SJB | KP0215ACBKG03RGBP-2SJB |
| KP0215ACBKG03RGB-2TJB | KP0215ACBKG03RGBP-2TJB |
| KP0215ACBKG03RGB-3FJB | KP0215ACBKG03RGBP-3FJB |
| KP0215ACBKG03RGB-3SJB | KP0215ACBKG03RGBP-3SJB |
| KP0215ACBKG03RGB-3TJB | KP0215ACBKG03RGBP-3TJB |
| KP0215ANAKG03RGB | KP0215ANAKG03RGBP |
| KP0215ANAKG03RGB-1FJB | KP0215ANAKG03RGBP-1FJB |
| KP0215ANAKG03RGB-1SJB | KP0215ANAKG03RGBP-1SJB |
| KP0215ANAKG03RGB-1TJB | KP0215ANAKG03RGBP-1TJB |
| KP0215ANBKG03RGB | KP0215ANBKG03RGBP |
| KP0215ANBKG03RGB-2FJB | KP0215ANBKG03RGBP-2FJB |
| KP0215ANBKG03RGB-2SJB | KP0215ANBKG03RGBP-2SJB |
| KP0215ANBKG03RGB-2TJB | KP0215ANBKG03RGBP-2TJB |
| KP0215ANBKG03RGB-3FJB | KP0215ANBKG03RGBP-3FJB |
| KP0215ANBKG03RGB-3SJB | KP0215ANBKG03RGBP-3SJB |
| KP0215ANBKG03RGB-3TJB | KP0215ANBKG03RGBP-3TJB |
| KP0215ASAKG03RGB | KP0215ASAKG03RGBP |
| KP0215ASAKG03RGB-1FJB | KP0215ASAKG03RGBP-1FJB |
| KP0215ASAKG03RGB-1SJB | KP0215ASAKG03RGBP-1SJB |
| KP0215ASAKG03RGB-1TJB | KP0215ASAKG03RGBP-1TJB |
| KP0215ASBKG03RGB | KP0215ASBKG03RGBP |
| KP0215ASBKG03RGB-2FJB | KP0215ASBKG03RGBP-2FJB |
| KP0215ASBKG03RGB-2SJB | KP0215ASBKG03RGBP-2SJB |
| KP0215ASBKG03RGB-2TJB | KP0215ASBKG03RGBP-2TJB |
| KP0215ASBKG03RGB-3FJB | KP0215ASBKG03RGBP-3FJB |
| KP0215ASBKG03RGB-3SJB | KP0215ASBKG03RGBP-3SJB |
| KP0215ASBKG03RGB-3TJB | KP0215ASBKG03RGBP-3TJB |



www.nkkswitches.com • 1.877.2BUYNKK (228.9655)

7850 East Gelding Drive • Scottsdale, AZ 85260 • Telephone 480.991.0942 • Fax 480.998.1435